

GREATER MANCHESTER

DOING THINGS DIFFERENTLY FOR OUR COMMUNITIES

Hate Crime Plan 2020-2023



Greater Manchester stands together against hate crime. [LetsEndHateCrime.com](https://letsendhatecrime.com)

Easy Read



Introduction by Baroness Beverley Hughes
Deputy Mayor of Greater Manchester
Policing, Crime and Criminal Justice



Greater Manchester welcomes lots of different communities.

They help to make Greater Manchester a good place to grow up, get on and grow old together.



We are proud of Greater Manchester and want people who live and work here to be happy.

But there are some people who spread hate and upset by carrying out hate crimes.

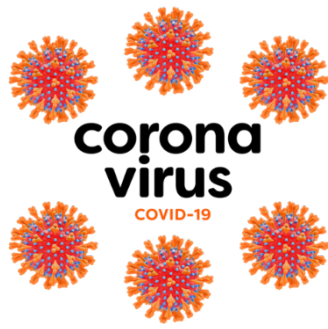
We do not want hate crime in Greater Manchester.

We want to understand the effect hate crime has on people and communities.



This plan says how we will work together to stop hate crime.

It builds on good work happening across the area.



Lots of things have happened this year that affect all of us.

Coronavirus has affected our communities.



The Black Lives Matter movement has shown us the power of having a voice.

This plan will give communities a voice in the work to end hatred.



What are hate crimes and hate incidents?

A hate incident is when someone is targeted because of:



- disability



- Trans identity



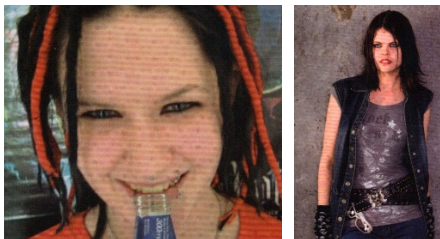
- Sexual orientation



- race



- religion



- alternative subculture - for example being a goth.



A hate crime is when a hate incident breaks the law.



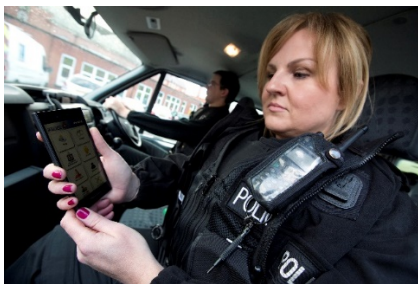
It can involve saying bad things to someone, saying them on-line, physical attacks or encouraging people to hate.



What happens if you report a hate incident?

When someone thinks they are the victim of a hate incident the police put a marker against it.

This can be used to count the number of hate incidents and crimes.



The police will contact the victim to get more details and will update them on progress.



Vision

Greater Manchester is home to more than 2.8 million people.

We want to build strong communities and protect places where people live, work, meet and travel.

Stopping hate will help people feel safe and welcome in all parts of Greater Manchester.

There are lots of organisations who work together to stop hate crime, including:

Greater Manchester's 10 Local Authorities:

- Bolton
- Bury
- Manchester
- Oldham
- Rochdale
- Salford
- Stockport
- Tameside
- Trafford
- Wigan



- Greater Manchester Police



- Crown Prosecution Service



- Transport for Greater Manchester



**GREATER
MANCHESTER**
FIRE AND RESCUE SERVICE



- Greater Manchester Fire and Rescue Service



- Schools, colleges and universities.
- Voluntary, community and faith groups



The Mayor, Andy Burnham, has also set up some panels to help advise on policy and actions.

These include:

- LGBTQ+ Adviser and Panel
- Disabled People's Panel
- Women and Girls' Equality Panel
- Race Equality Panel



This plan brings all of that work together to say what we will do to stop hate crime.



What people said when we spoke to them about this plan



Our communities helped us to write this plan.



We asked people online what they wanted us to do to stop hate crimes and support victims.



We also ran face-to-face sessions to reach as many people as possible.



We spoke to 817 people, with 772 living in Greater Manchester.

You can read what people said on the [GMConsult website](#).



We found out:

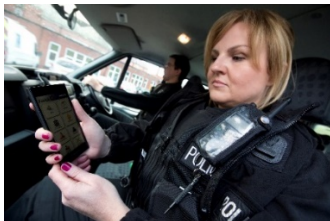
- There was overall support for the work we wanted to do.



- There was support for including hate against women and girls and age as new areas to look at, as this is not recorded by the police at the moment.



- People wanted information on how they can safely challenge hate crime if they saw it happening.



- People felt that if they reported a hate crime then they should get updates on progress from the police.



- There was support for Third Party Reporting Centres but some asked if they work.



- The action most people suggested was education and work in schools.



What we will do

Based on what people said, there are 4 things that are important to look at over the next few years. This includes:

LetsEndHateCrime.com

#WeStandTogether

Celebrating Diversity • Challenging Hate • For a Safer, Stronger Society
Charity No. 1175945

Greater Manchester

Victims' Services

1. Raise awareness by:

- A joined-up campaign across Greater Manchester.
- Promoting the campaigns:
 - Let's End Hate Crime
 - We Stand Together
 - Greater Manchester Victims' Services
- Look at opportunities to raise awareness in schools.

Greater Manchester

Victims' Services

2. Improve support for victims by:

- Sending victims to the right support services.
- Providing different ways to report hate crimes.
- Training for workers to support victims.
- Keeping victims updated about their case.



3. Increase reporting of hate

crimes by:

- Raising awareness of what a hate crime is.
- Providing different ways to report hate crimes.
- Promoting third party reporting centres.
- Promoting positive outcomes to encourage victims to report hate crimes.



4. Stop hate crime by:

- Building strong communities, including online, where hate and discrimination are not accepted.
- Promoting awareness of hate crime, how it affects people and how to get support.
- Challenging extreme political or religious views that can lead to hate crime and terrorism.
- Looking at safe ways to challenge hate.
- Looking at programmes to change the behaviour of people who have committed hate crimes, including talking to their victims.



What we will do to deliver the plan



The Greater Manchester Hate Crime Working Group is made up of lots of different organisations and will deliver this plan.

To help with this we will link into other plans and organisations, including:



Local Plans

Local plans will deliver projects that will be reviewed every year.

This plan links into other plans to support joint actions.



Scrutiny Panels

Local Scrutiny Involvement Panels have been set up to involve communities and partners in assessing the quality of casework.

They enable members to have an impact on decisions on issues such as hate crime and help the Crown Prosecution Service to improve how it deals with such cases.



TRAVELSAFE
PARTNERSHIP

Public transport

Transport for Greater Manchester and Greater Manchester Police lead the TravelSafe Partnership.

This looks at crime and anti-social behaviour on the public transport network to protect people.



National Cyber Hate Crime Hub

The internet can give someone a chance to spread hate.

This can be on forums, blogs, review sites, media comments pages and even shopping sites. This should not be ignored.



Greater Manchester Police run the National Cyber Hate Crime Hub for the National Police Chief's Council.

The Hub looks into hate on the internet reported on the True Vision website.

A Shared Future

A report of the Greater Manchester
Preventing Hateful Extremism and
Promoting Social Cohesion Commission

EMBARGOED UNTIL NOON, MONDAY 30 JULY, 2018

Shared Futures Group

This group meets to look at community tensions, education and work to strengthen communities.

It delivers the recommendations from the Shared Future Report which looks at social exclusion in Greater Manchester.

You can read the report on the [GMCA website](#)



Working with Health Partners

Health partners are vital to making sure we can stop hate crime.

Looking at what has happened to someone in their life is important for understanding the experiences of offenders and victims.



Working with Voluntary and Community Groups

The Greater Manchester Hate Crime Partnership works with local voluntary and community groups to reach communities and deliver the plan.



This includes local grants, support for victims and third-party reporting to raise awareness and promote communities working together across Greater Manchester.



Review

We will look at the number of hate crimes within Greater Manchester.

We will also check where hate incidents are happening.



Through awareness campaigns we will check how well we are reaching communities and target campaigns where needed.

We will also check how many people take part in grant-funded community events and look at feedback from communities.



Through the Police and Crime Survey we will check how safe the public feel and their confidence in the police.

We want people to feel like they belong to their communities and will use surveys to help us understand how satisfied they are with policing.



Throughout this plan we will work with local groups and communities to get feedback and raise awareness of hate crime.



How to Report

Even if you are not sure you have been a victim of a hate crime, it is important to speak to someone to get advice and support. You can report a hate crime to:

Greater Manchester Police

Emergency: In an emergency you should phone 999

If it is not an emergency you can phone Greater Manchester Police on 101, visit a police station or visit www.gmp.police.uk to chat online with an operator.



CrimeStoppers.

0800 555 111

100% anonymous. Always.

If you do not want to give your name you can report anonymously to:

- True Vision:
www.report-it.org.uk/
- CrimeStoppers:
0800 555 111
- Let's End Hate Crime:
www.letsendhatecrime.com/

Greater Manchester

Victims' Services

You can get help and support by contacting Greater Manchester Victims' Services:

- www.gmvictims.org.uk
- Helpline:
0161 200 1950
- Text Relay:
18002 0161 200 1950.