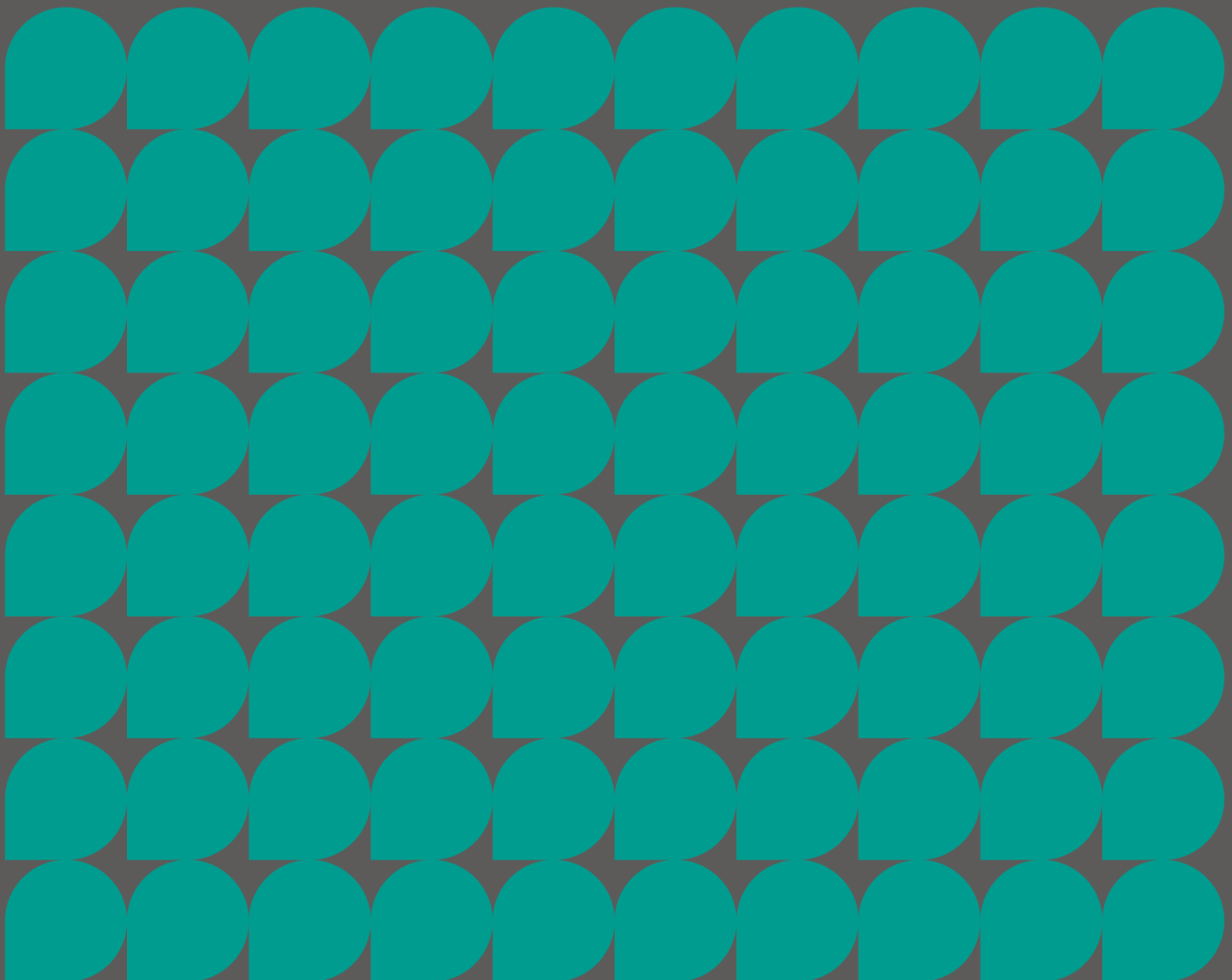


# Places for Everyone

Bolton Council Statement of Community Involvement  
Compliance Statement  
February 2022



**Places for Everyone  
Statement of Community Involvement Compliance Statement  
Regulation 18 and 19 Consultations  
Bolton Council**

## **1 Introduction**

- 1.1 Bolton's Statement of Community Involvement (SCI) sets out how the council intends to involve the community in the preparation of its planning policies and in the decision-making process for planning applications. All elements of the community are seen as having a significant role to play in the planning of Bolton and the term "community" embraces all and includes local residents, businesses, organisations, landowners, developers, statutory agencies and interest groups.
- 1.2 Bolton's SCI provides in its Appendix 1 a checklist of possible methods of consultation that can be used in publicising and seeking comments on development plans, including Places for Everyone (PfE). It is not prescriptive about which methods should be used but more a flexible suite of tools which can be tailored to specific circumstances.
- 1.3 This compliance statement is required to demonstrate that consultation undertaken to inform preparation of the Joint Development Plan Document the Greater Manchester Spatial Framework, now Places for Everyone, has met requirements of Bolton's SCI.
- 1.4 Bolton Council produced its first SCI in 2007, this has subsequently been reviewed in January 2011 and August 2020.
- 1.5 Consultation on a first draft of the Greater Manchester Spatial Framework (GMSF) under Regulation 18 of the Town and Country Planning (Local Planning) (England) Regulations 2012 took place between October 2016 and January 2017. A further consultation under Regulation 18 on a second draft of the GMSF followed between January and March 2019. The most recent consultation on the Publication version of Places for Everyone Joint Plan under Regulation 19 took place between August and October 2021.
- 1.6 At the time of consultation on the two drafts of the GMSF in 2016 and 2019, Bolton's [Statement of Community Involvement 2011](#) was applicable and the current [August 2020 Statement of Community Involvement](#) is relevant to consultation on the Places for Everyone Joint Plan.

## **2 Regulation 18 – Consultation on the first draft of the Greater Manchester Spatial Framework (2016)**

- 2.1 A summary of the consultation and publicity methods used by Bolton Council in inviting representations on the 2016 draft of the Greater Manchester Spatial Framework under Regulation 18 of the Town and Country Planning (Local Planning) (England) Regulations 2012 is set out below.

### **Consultation methods specified in the Bolton SCI for public participation of a Development Plan Document and how they were met in the consultation**

#### **Council's website – [www.bolton.gov.uk](http://www.bolton.gov.uk) and email shot**

- 2.2 The council included details of the consultation on the planning policy and strategy pages of the council website for the duration of the consultation period. Appendix 1 provides a copy of the Regulation 18 webtext.
- 2.3 The council sent letters to every address on and within 500 metres of the largest allocated site for development, and on and within 250 metres of the two smaller allocated sites for development. The letters explained how to make representations and where and when drop-in events were taking place. The total number of letters sent was 630.
- 2.4 The council consulted seldom heard groups via Bolton Community and Voluntary Services.

#### **Media – local/national press, Bolton Scene, specialist planning magazines, radio and tv**

- 2.5 The council briefed the Bolton News prior to the start of consultation and then issued a press release. This resulted in articles in the Bolton News, including how to make representations. An example of press coverage about the emerging GMSF appeared in the Bolton News on 21<sup>st</sup> October 2016 (appendix 2).
- 2.6 In addition, the council sent regular tweets and Facebook updates for the duration of the consultation.

#### **Poster campaigns and leaflet/brochures**

- 2.7 The GMCA produced leaflets and display materials for use at drop-in events.

#### **Development plan consultation database**

- 2.8 The GMCA contacted people and organisations on its development plan consultation database as did Bolton Council. These sizeable databases cover a wide range of organisations, agencies, duty to co-operate bodies, landowners, developers and the general public. Somewhere over 2000 people or organisations with interests in Bolton were contacted at this stage. Appendix 3 contains a template letter about the consultation. A further letter concerning the extension to the consultation period is at appendix 4.

#### **Public exhibitions/displays/stalls/road shows**

2.9 The council held three drop-in events during the consultation period where members of the public were able to speak to council officers and also to GMCA officers at the meetings at Westhoughton and Bromley Cross about the draft GMSF and specific proposals for Bolton. There were displays about the overall approach of the GMSF, and about sites proposed for development in Bolton. The following drop-in events took place at;

- **At the Carnegie Hall, Market Street, Westhoughton, BL5 3AE, from 3pm – 7.30pm, on Thursday, 8th December.**
- **The Friends Meeting House, Silverwell Street, Bolton, BL1 1PP, from 3pm – 7.30pm, on Tuesday, 13th December.**
- **Bromley Cross Village Hall, Darwen Road, BL7 9JG, from 3pm – 7.30pm, on Thursday, 15th December.**

2.10 Details of the above events were advertised in a variety of ways as follows:

- On the council website
- A press release to the Bolton News
- Letters/emails to all contacts on the council's development plan database (appendix 5)

2.11 Up to nine presentation boards were displayed, each with GMSF information ranging from infrastructure proposals and housing distribution across Greater Manchester to site specific policies within Bolton. A table was placed after the presentation boards, providing hand-outs of the policies and displaying potential sites that were put forward in the Call for Sites consultation along with brownfield SHLAA sites. Postcards were provided to give an opportunity for attendees to make comments on the proposals, along with business cards providing guidance on how to comment online. Photographs showing the layout at the Friends Meeting House are at appendix 6.

**Documents available for inspection at Council offices and libraries during set consultation periods**

2.12 Hard copies of the draft GMSF document were made available in Bolton Town Hall One Stop Shop and Bolton Central Library and at the borough's local libraries at Blackrod, Brightmet, Bromley Cross, Farnworth, Harwood, High Street, Horwich, Little Lever and Westhoughton. A paper copy of the Integrated Assessment was available for viewing at Bolton Town Hall One Stop Shop. A memorandum to assist library staff can be found at appendix 7.

### **Produce documents in alternative formats**

- 2.13 The SCI sets out that consultation plan documentation could be produced in alternative formats where this is requested. As no requests were made this was not a requirement for the 2016 GMSF consultation.

### **Contact telephone number**

- 2.14 Consultees were directed towards email addresses and websites for clarification questions, rather than telephone numbers.

### **Letters to statutory bodies**

- 2.15 GMCA included statutory bodies in its development plan consultation database.

### **Public meetings / Area Forums**

- 2.16 See public exhibitions/displays/stalls/road shows above for details.

### **One to one meetings with stakeholders**

- 2.17 This method of consultation was not used in Bolton during the 2016 GMSF consultation.

### **Focus groups for example, Young People's Panel**

- 2.18 This method of consultation was not used in Bolton during the 2016 GMSF consultation.

### **3 Regulation 18 – Consultation on the second draft of the Greater Manchester Spatial Framework (2019)**

- 3.1 A summary of the consultation and publicity methods used by Bolton Council in inviting representations on the 2019 draft of the Greater Manchester Spatial Framework under Regulation 18 of the Town and Country Planning (Local Planning) (England) Regulations 2012 is set out below.
- 3.2 Bolton's revised Statement of Community Involvement (SCI) was adopted in January 2011 and sets out how and when the community will be involved in the preparation of planning documents like the GMSF.
- 3.3 Bolton's SCI provides a checklist of possible methods of consultation that can be used in publicising and seeking comments on development plans. It is not prescriptive about which methods should be used. This statement explains what methods of consultation were used during the 2019 consultation on the draft GMSF and demonstrates that the requirements of Bolton's SCI were met.
- 3.4 The 2019 draft GMSF was produced as a joint Development Plan Document (DPD).

#### **Consultation methods specified in the Bolton SCI for public participation of a Development Plan Document and how they were met in the consultation.**

##### **Council's website – [www.bolton.gov.uk](http://www.bolton.gov.uk) and email shot**

- 3.5 The council included details of the consultation on the planning policy and strategy pages of the council website for the duration of the consultation period (appendix 8).
- 3.6 The council sent letters to every address on and within 500 metres of the largest allocated site for development, and on and within 250 metres of the two smaller allocated sites for development. The letters explained how to make representations and where and when drop-in events were taking place. The total number of letters sent was 630.
- 3.7 The council consulted seldom heard groups via Bolton Community and Voluntary Services.

##### **Media – local/national press, Bolton Scene, specialist planning magazines, radio and tv**

- 3.8 The council briefed the Bolton News prior to the start of consultation and then issued a press release (appendix 9). This resulted in articles in the Bolton News including on how to respond on-line (appendix 10). Bolton's Executive Cabinet Member for Housing was interviewed about the GMSF by Bolton FM (a local radio station) on 10<sup>th</sup> January 2019. This was informed by the briefing note (appendix 11).
- 3.9 In addition, the council sent regular tweets and Facebook updates for the duration of the consultation. As an illustration, in terms of social media statistics, on Twitter there were 6 council tweets about the drop-in events with 12,400 impressions and 88 engagements. On Facebook the council issued 5 posts about the drop-in events with a reach of 8,900 and 150 engagements.

##### **Poster campaigns and leaflet/brochures**

- 3.10 The GMCA produced leaflets and publicity for use at drop-in events including pull-up boards and display boards.

#### **Development plan consultation database**

- 3.11 The GMCA contacted people and organisations on its development plan consultation database as did Bolton Council. These sizeable databases cover a wide range of, organisations, agencies, duty to co-operate bodies, landowners and developers and the general public. A copy of the general letter sent by Bolton is at appendix 12. Emails were sent to 577 subscribers to the council's Planning Strategy group, predominantly members of the public, via GovDelivery.

#### **Public exhibitions/displays/stalls/road shows**

- 3.12 The council held two drop-in events during the consultation period where members of the public were able to speak to council and Transport for Greater Manchester officers about the draft GMSF and specific proposals for Bolton. There were displays about the overall approach of the GMSF, and about sites proposed for development in Bolton. The following drop-in events took place at;

- **The Carnegie Hall, Westhoughton, on Monday, 25th February from 2pm to 7pm**
- **The Friends Meeting House, Silverwell Street, Bolton, on Tuesday, 6th March from 2pm to 7pm**

- 3.13 Details of the above events were advertised in a variety of ways as follows:

- On the council website (appendix 13)
- A press release for the drop-in events (appendix 14)
- News articles in the Bolton News
- Twitter and Facebook (appendix 15)
- GMCA website
- Letters to addresses on or close to proposed development sites

- 3.14 Over 100 people attended the two drop-in events. In Westhoughton, the main focus of interest was on the proposed development of the three allocated employment sites, including the need for the developments, the loss of greenfield land to development, and traffic generation. In Bolton town centre, there was some focus on those sites, but also interest from areas of the Borough where the GMSF does not identify any sites for development.

#### **Documents available for inspection at Council offices and libraries during set consultation periods**

- 3.15 Hard copies of the draft GMSF document along with the Integrated Assessment and GM Transport Strategy 2040 were made available in Bolton Town Hall and Bolton Central Library. At other libraries in the Borough, users were able to access through the internet, and library staff received instructions on how to assist with this process. The memorandum to libraries and the Town Hall One-Stop-Shop can be found at appendix 16.

### **Produce documents in alternative formats**

- 3.16 The SCI sets out that consultation plan documentation could be produced in alternative formats where this is requested. As no requests were made this was not a requirement for the 2019 GMSF consultation.

### **Contact telephone number**

- 3.17 Consultees were directed towards email addresses and websites for clarification questions, rather than telephone numbers.

### **Letters to statutory bodies**

- 3.18 GMCA included specific bodies in its development plan consultation database to avoid notifications from multiple districts.

### **Public meetings / Area Forums**

- 3.19 See Public exhibitions/displays/stalls/road shows above.

### **One to one meetings with stakeholders**

- 3.20 This method of consultation was not used in Bolton during the 2019 GMSF consultation.

### **Focus groups for example, Young People's Panel**

- 3.21 This method of consultation was not used in Bolton during the 2019 GMSF consultation
- 3.22 In addition, the council sent regular tweets and Facebook updates for the duration of the consultation



## **4 Regulation 19 - Invitation to make representations on the Publication Draft Places for Everyone Joint Development Plan 2021**

- 4.1 A summary of the consultation and publicity methods used in inviting representations on the Publication Draft Places for Everyone Joint Development Plan 2021 under Regulation 19 of the Town and Country Planning (Local Planning) (England) Regulations 2012 is set out below.
- 4.2 Consultation methods specified in the Bolton SCI for public participation of a Development Plan Document and how they were met in the consultation.

### **Council's website – [www.bolton.gov.uk](http://www.bolton.gov.uk) and email shot**

- 4.3 The council included details of the consultation on the planning policy and strategy pages of the council website for the duration of the consultation period (appendix 17).
- 4.4 Site notices were displayed in prominent locations, including for example where public footpaths access the sites, on the boundaries of the three proposed allocations in Bolton, at the two proposed Green Belt extensions and also within Wingates Industrial Estate to the east of the West of Wingates site. Examples of these together with a map showing geographical spread and photos in-situ are at appendix 18.
- 4.5 The council consulted seldom heard groups via Bolton Community and Voluntary Services.

### **Media – local/national press, Bolton Scene, specialist planning magazines, radio and tv**

- 4.6 The council issued a press release prior to the start of consultation. This resulted in articles in the Bolton News, including how to make representations. An example new article is at appendix 19.
- 4.7 In addition, the council sent regular tweets and Facebook updates for the duration of the consultation. The schedule, its circulation and the social media insight report at are appendix 20.

### **Poster campaigns and leaflet/brochures**

- 4.8 The GMCA produced displays for use at venues across GM although these were not used in most districts including Bolton at this stage. Bolton council used site notices for use around the proposed allocations and Green Belt additions.

### **Development plan consultation database**

- 4.9 The GMCA contacted people and organisations on its development plan consultation database as did Bolton Council. These sizeable databases cover a wide range of organisations, agencies, duty to co-operate bodies, landowners and developers and the general public. Bolton council sent out 225 letters (appendix 21) and 443 emails (appendix 22). In addition, emails were sent to 602 subscribers to the council's Planning Strategy group, predominantly members of the public, via MailChimp (appendix 23).

### **Public exhibitions/displays/stalls/road shows**

- 4.10 Given covid restrictions were in place no face to face exhibitions or displays were used within Bolton. However, the PfE virtual exhibition space was referenced and linked to from the council website and in its publicity to address this.

### **Documents available for inspection at Council offices and libraries during set consultation periods**

- 4.11 Hard copies of the draft PfE document were made available at Bolton Central, Horwich and Westhoughton libraries, Bolton's Town Hall venue being closed due to covid restrictions. At all libraries in the Borough, users were able to access the PfE documentation through the internet, and library staff received instructions on how to assist with this process (appendix 24).

### **Produce documents in alternative formats**

- 4.12 The SCI sets out that consultation plan documentation could be produced in alternative formats where this is requested. As no requests were made this was not a requirement for the 2021 PfE consultation.

### **Contact telephone number**

- 4.13 Consultees were directed towards email addresses and websites for clarification questions, rather than telephone numbers. GMCA had a PfE consultation voicemail inbox and specific queries were re-directed to Bolton to respond.

### **Letters to statutory bodies**

- 4.14 GMCA included specific bodies in its development plan consultation database to avoid notifications from multiple districts.

### **Public meetings / Area Forums**

- 4.15 No public meetings were provided due to covid restrictions.

### **One to one meetings with stakeholders**

- 4.16 This method of consultation was not used in Bolton during the 2021 GMSF consultation.

### **Focus groups for example, Young People's Panel**

- 4.17 This method of consultation was not used in Bolton during the 2021 GMSF consultation.

## **Appendices**

### **Places for Everyone Statement of Community Involvement Compliance Statement Regulation 18 and 19 Consultations Bolton Council**

## Appendix 1 – Regulation 18 2016 consultation webtext

**Bolton Council are working with the nine other local authorities in Greater Manchester to develop a new spatial framework and the draft plan has just been published for consultation.**

Over the next twenty years there is a need to deliver continued sustainable economic growth, creating more jobs and new homes for the people of Greater Manchester.

The ten local authorities in Greater Manchester are working together on a joint plan called the Greater Manchester Spatial Framework (GMSF). This is being prepared to ensure that new homes and jobs are provided in the right places with the transport (roads, rail and public transport) and infrastructure to support the communities and manage growth sustainably.

The draft Greater Manchester Spatial Framework sets out:

- How much housing and employment land is needed up to 2035.
- A number of strategic sites across Greater Manchester to assist in meeting these requirements.
- The importance of infrastructure such as, health, education, transport, green spaces and utilities to support neighbourhoods and employment.
- Ways to protect and improve the natural environment.

A draft vision and a set of strategic objectives for the Framework were produced during 2015. In addition, a number of strategic options were also developed, outlining a range of land requirements for housing and business over the next twenty years. Consultation took place on these from 9 November 2015 to 11 January 2016 so that the views of residents and businesses could be taken into account in shaping the draft version of the GMSF.

The draft version of the Greater Manchester Spatial Framework has now been prepared and public consultation runs from **31 October to 23 December 2016**. During this time, we would welcome any comments you may have on this document and supporting background papers. Views submitted will be considered and a final draft will be published in 2017 when another period of consultation will be held.

For further information on the consultation, to view and download the documents please visit [www.greatermanchester-ca.gov.uk/GMSF](http://www.greatermanchester-ca.gov.uk/GMSF):

Paper copies of the draft Greater Manchester Spatial Framework may be viewed at:

- Bolton Town Hall One Stop Shop
- Bolton Central Library
- The borough's local libraries at Blackrod, Brightmet, Bromley Cross, Farnworth, Harwood, High Street, Horwich, Little Lever and Westhoughton.

A paper copy of the Integrated Assessment may be viewed at Bolton Town Hall One Stop Shop.

Comments may only be made:

- Online at <http://gmsf-consult.objective.co.uk>
- By email to [GMSF@agma.gov.uk](mailto:GMSF@agma.gov.uk)
- By Post to : Greater Manchester Integrated Support Team

PO Box 532  
Town Hall  
Manchester  
M60 2LA

All comments must be received **by 17:00 on 23<sup>rd</sup> December 2016**.

Please note all comments will be held by the Greater Manchester Combined Authority and will be available to view publicly. Comments cannot be treated as confidential. Your personal information, such as your postal and e-mail address will not be published, but your name and organisation (if relevant) will.

The Greater Manchester Combined Authority maintains a database of consultees who wish to be kept informed about the Greater Manchester Spatial Framework. In responding to this consultation your contact details will automatically be added to the consultation database. If you do not want to be contacted about future Greater Manchester Spatial Framework consultations please state this in your response.

### **Identifying possible development sites**

Alongside the earlier consultation we also asked local residents, businesses and land owners and developers to identify sites they think could be suitable for housing or employment development.

The sites submitted so far are available to view [here](#) so people are aware of all the ideas and proposals.

**These sites are promoted by owners/developers and have not been endorsed by us.** We are simply publishing this information and seeking to ensure every stage of the process is transparent.

In the meantime, the call for sites remains open and you can submit any sites that you feel are suitable please visit [www.greatermanchester-ca.gov.uk/GMSF](http://www.greatermanchester-ca.gov.uk/GMSF)

## **Appendix 2 – Regulation 18 2016 consultation – Bolton News GMSF coverage 21<sup>st</sup> October 2016**

**REVEALED: Almost 17,000 new homes could be built across Bolton over next 20 years**



ALMOST 17,000 new homes could be built across Bolton over the next 20 years.

Bolton Council has submitted a strategy for development as part of the Greater Manchester Spatial Framework — a region wide regeneration plan.

All 10 Greater Manchester councils have been asked to submit housing and commercial building plans.

If the leaders agree on the proposals, they will go out for public consultation at the end of the month.

Bolton's proposed development plans include building around 16,800 homes over the next two decades.

Seven thousand of them are planned for greenbelt, greenfield or open protected sites.

The remaining 9,800 homes would be built on brownfield sites across the borough.

A major industrial development is also included in Bolton's framework submission.

Harworth Estates, the company behind the huge Logistics North hub in Over Hulton, is believed to be planning to create another large commercial development on an area of green space near to the Wingates Industrial Estate. This also forms part of the council's strategy.

The majority of the proposed housing in green spaces has already been reported in The Bolton News in recent weeks.

It focuses mainly on the M61 corridor to the west of the borough.

These include plans from Peel to build 1,700 new homes on land near to the Chequerbent roundabout.

The same company is behind a proposed 1,200 new properties on the Hulton Park Estate — which form part of an ambitious project including a championship standard golf course, hotel and conference centre.

Westhoughton residents could also have to contend with a further 1,000 homes being built on land at Bowlands Hey. Bellway Homes are believed to be one of a number of developers interested.

The council's framework submission also includes plans for around 3,000 homes in green spaces in the north of the borough.

No specific sites have been identified and it is understood the properties would be built on a wide range of smaller green sites, if approved.

Bolton Council's executive cabinet member for development and regeneration, Cllr Ebrahim Adia said: "The Greater Manchester Spatial Framework is fundamental to ensuring that we are able to meet the economic development and housing needs for the region in a fully planned and strategic way.

"While our focus in Bolton is on ensuring that we develop brownfield sites first, our current projections show that there are not enough of these for our economic ambitions.

"This submission is our response to that gap.

"It does mean that some areas of greenbelt and greenfield land have been included.

"The council is of course aware of the concerns of residents in terms of building in green areas. That is why we are trying to ensure that we have a long term strategy which supports development and the infrastructure that is needed with it.

"This plan will mitigate the risk of developers coming forward with proposals to build on green sites in the future which do not fit within our planned framework.

"While there are a number of planned developments for green areas, there were a lot more put forward by developers in the call for sites which have not been included because they did not meet our strict criteria.

"We are only at the consultation stage but we believe the framework will give us some security and ability to protect the green belt from development in the future."

Each local authority leader must agree to the overall proposals.

If they do so at a meeting on October 28, then the public consultation on the proposals will run from October 31 until December 23.

People potentially affected will be entitled to have their say on the GMCA website.

The comments will then be considered before the publication of a final draft of the Greater Manchester Spatial Framework in summer 2017, when another period of consultation will be held.

The plan will then be submitted to the Secretary of State next November

After a final examination, the framework will be fully adopted at the start of 2019.

n A brownfield site describes land previously used for industrial purposes or some commercial uses.

Greenbelt are areas of largely undeveloped, wild, or agricultural land surrounding or neighbouring urban areas.

## Appendix 3 – Regulation 18 2016 - consultation letter

Date: 31 October 2016  
Your  
Our Ref: DoP/PS/GMSF

# Bolton Council

**Planning Strategy  
Department of Place**

Bolton Town Hall  
Bolton  
BL1 1RU

Tel: 01204 333218

**BY EMAIL ONLY**

**[www.bolton.gov.uk/LDF](http://www.bolton.gov.uk/LDF)  
[LDFconsultation@bolton.gov.uk](mailto:LDFconsultation@bolton.gov.uk)**

Dear Sir or Madam,

### **Greater Manchester Spatial Framework**

Public consultation on the draft Greater Manchester Spatial Framework runs from **31 October to 23 December 2016**. During this time, we would welcome any comments you may have on this document, together with the Integrated Assessment Report and other background papers.

Over the next twenty years there is a need to deliver continued sustainable economic growth, creating more jobs and new homes for the people of Greater Manchester.

The ten local authorities in Greater Manchester are working together to deliver this growth and to ensure that these new homes and jobs are provided in the right places with the transport infrastructure (roads, rail and public transport) and other infrastructure to support the communities and manage growth sustainably.

The draft Greater Manchester Spatial Framework sets out:

- How much housing and employment land is needed up to 2035.
- A number of strategic sites across Greater Manchester to assist in meeting these requirements.
- The importance of infrastructure such as, health, education, transport, green spaces and utilities to support neighbourhoods and employment.
- Ways to protect and improve the natural environment.

For further information on the consultation please visit [www.greatermanchester-ca.gov.uk/GMSF](http://www.greatermanchester-ca.gov.uk/GMSF)

Paper copies of the draft Greater Manchester Spatial Framework may be viewed at Bolton Central Library and Bolton Town Hall One Stop Shop and at the borough's local libraries at

Director of Place **Stephen Young**



INVESTOR IN PEOPLE

**Bolton Blackrod Farnworth Horwich Kearsley Little Lever South Turton Westhoughton ...all in the family**



Blackrod, Brightmet, Bromley Cross, Farnworth, Harwood, High Street, Horwich, Little Lever and Westhoughton.

A paper copy of the Integrated Assessment may be viewed at Bolton Town Hall One Stop Shop

Responses to the consultation may be made:

- Online at <http://gmsf-consult.objective.co.uk> or
- By email to [GMSF@agma.gov.uk](mailto:GMSF@agma.gov.uk)
- By Post to : Greater Manchester Integrated Support Team  
PO Box 532  
Town Hall  
Manchester  
M60 2LA

All comments must be received **by 17:00 on 23<sup>rd</sup> December 2016.**

Please note all comments will be held by the Greater Manchester Combined Authority and will be available to view publicly. Comments cannot be treated as confidential. Your personal information, such as your postal and e-mail address will not be published, but your name and organisation (if relevant) will.

The Greater Manchester Combined Authority maintains a database of consultees who wish to be kept informed about the Greater Manchester Spatial Framework. In responding to this consultation your contact details will automatically be added to the consultation database. If you do not want to be contacted about future Greater Manchester Spatial Framework consultations please state this in your response.

If you require any further information on the consultation please do not hesitate to contact the Greater Manchester Planning Team on: 0161 237 4636.

While any response to the GMSF should only be made using the contact details above you have been consulted because you are on Bolton council's list of people and organisations that it consults on planning policy. This will enable you to be kept up to date with progress on the Greater Manchester Spatial Framework and other planning policy documents. We will not share your contact details with anyone else unless the laws allows. Further information is available via the following links  
[www.bolton.gov.uk/website/pages/Dataprotection.aspx](http://www.bolton.gov.uk/website/pages/Dataprotection.aspx)

Please inform us if you do not wish the council to keep your contact details. This would mean that we would be unable to keep you up to date with the progress of this document or any other planning policy document.

If you would like to discuss the specific implications for Bolton please contact me.

Yours faithfully,  
Simon Godley  
Unit Manager Planning Strategy  
Direct Line: 01204 336111  
E-mail: [Simon.Godley@bolton.gov.uk](mailto:Simon.Godley@bolton.gov.uk)

Director of Place **Stephen Young**



INVESTOR IN PEOPLE

# Appendix 4 – Regulation 18 2016 consultation – extension consultation letter

Date: 19<sup>th</sup> December 2016  
Your  
Our Ref: DoP/PS/GMSF



Planning Strategy  
Department of Place  
Bolton Town Hall  
Bolton  
BL1 1RU

Tel: 01204 333218

[www.bolton.gov.uk](http://www.bolton.gov.uk)  
[LDFconsultation@bolton.gov.uk](mailto:LDFconsultation@bolton.gov.uk)

Dear Recipient

We have been in touch with you previously about the current public consultation on the draft Greater Manchester Spatial Framework. This is to let you know that the close of the consultation period has been extended from Friday, 23<sup>rd</sup> December 2016 to **Monday, 16<sup>th</sup> January 2017**.

For further information on the consultation please visit [www.greatermanchester-ca.gov.uk/GMSF](http://www.greatermanchester-ca.gov.uk/GMSF)

Paper copies of the draft Greater Manchester Spatial Framework may be viewed at Bolton Central Library and Bolton Town Hall One Stop Shop and at the borough's local libraries at Blackrod, Breightmet, Bromley Cross, Farnworth, Harwood, High Street, Horwich, Little Lever and Westhoughton.

A paper copy of the Integrated Assessment may be viewed at Bolton Town Hall One Stop Shop.

Responses to the consultation may be made:

- Online at <http://gmsf-consult.objective.co.uk> or
- By email to [GMSF@agma.gov.uk](mailto:GMSF@agma.gov.uk)
- By Post to : Greater Manchester Integrated Support Team  
PO Box 532  
Town Hall  
Manchester  
M60 2LA

Director of Place **Stephen Young**



INVESTOR IN PEOPLE

All comments must be received **by 23:59 on 16<sup>th</sup> January 2017.**

Please note all comments will be held by the Greater Manchester Combined Authority and will be available to view publicly. Comments cannot be treated as confidential. Your personal information, such as your postal and e-mail address will not be published, but your name and organisation (if relevant) will.

The Greater Manchester Combined Authority maintains a database of consultees who wish to be kept informed about the Greater Manchester Spatial Framework. In responding to this consultation your contact details will automatically be added to the consultation database. If you do not want to be contacted about future Greater Manchester Spatial Framework consultations please state this in your response.

If you require any further information on the consultation please do not hesitate to contact the Greater Manchester Planning Team on: 0161 237 4636.

While any response to the GMSF should only be made using the contact details above you have been consulted because you are on Bolton council's list of people and organisations that it consults on planning policy. This will enable you to be kept up to date with progress on the Greater Manchester Spatial Framework and other planning policy documents. We will not share your contact details with anyone else unless the laws allows. Further information is available via the following links  
[www.bolton.gov.uk/website/pages/Dataprotection.aspx](http://www.bolton.gov.uk/website/pages/Dataprotection.aspx)

Please inform us if you do not wish the council to keep your contact details. This would mean that we would be unable to keep you up to date with the progress of this document or any other planning policy document.

If you would like to discuss the specific implications for Bolton please contact me.

Yours sincerely,

Simon Godley  
Unit Manager Planning Strategy  
Direct Line: 01204 336111  
E-mail: Simon.Godley@bolton.gov.uk

Director of Place **Stephen Young**



INVESTOR IN PEOPLE

## Appendix 5 – Regulation 18 2016 consultation - Letter/email regarding drop-in events

Date: 28 November 2016  
Your 1  
Our Ref: DoP/PS/GMSF



**Planning Strategy**  
**Department of Place**  
Bolton Town Hall  
Bolton  
BL1 1RU

Tel: 01204 333218  
**[www.bolton.gov.uk](http://www.bolton.gov.uk)**

Dear Sir/Madam

We wrote to you on 31<sup>st</sup> October about consultation on the Greater Manchester Spatial Framework (GMSF).

The GMSF is a document setting out how much housing and employment land is needed in Bolton and Greater Manchester up to 2035, and where that development could take place.

We would like to invite you to a drop-in session to find out more about the framework and what it might mean for you.

We are holding three drop-ins, where there will be a display of the draft GMSF, and council officers will also be present to help with queries.

The times and locations of the drop-ins are as follows:-

- Carnegie Hall, Market Street, Westhoughton, BL5 3AE, from 3pm – 7.30pm, on Thursday, 8<sup>th</sup> December.
- Friends Meeting house, Silverwell Street, Bolton, BL1 1PP, from 3pm – 7.30pm, on Tuesday, 13<sup>th</sup> December.
- Bromley Cross Village Hall, Darwen Road, BL7 9JG, from 3pm – 7.30pm, on Thursday, 15<sup>th</sup> December.

You are welcome to attend any of these events and drop in at any time - we look forward to seeing you.

For more information on the consultation, please visit [www.greatermanchester-ca.gov.uk/GMSF](http://www.greatermanchester-ca.gov.uk/GMSF).

Yours sincerely,

Director of Place **Stephen Young**



Simon Godley  
Unit Manager Planning Strategy  
Direct Line: 01204 336111  
E-mail: [Simon.Godley@bolton.gov.uk](mailto:Simon.Godley@bolton.gov.uk)

Director of Place **Stephen Young**



## Appendix 6 – Regulation 18 2016 consultation - Photographs of Friend's Meeting House drop-in venue and setup



## Appendix 7 – Regulation 18 2016 consultation - Memorandum to Bolton Libraries

Andrew Chalmers  
Development and Regeneration  
Planning Strategy  
Address: 3<sup>rd</sup> Floor, Town Hall  
Bolton BL1 1RU

# Bolton Council

## Memo

---

	Bolton Libraries and One Stop Shop	<b>5</b>	<b>Date</b>	31st October 2016
<b>From</b>	Andrew Chalmers			6109

---

## Greater Manchester Spatial Framework

Bolton Council along with the other nine councils in Greater Manchester has now published this document for consultation from **31 October to 23 December 2016**.

Comments can be made on this this document and on the associated Integrated Assessment Report and other background papers which are all available on-line.

In the past we have pointed people to the libraries and One Stop Shop to view paper copies of consultation documents. So please find enclosed a copy of the Greater Manchester Spatial Framework document and, in the case of the Bolton Town Hall One-Stop Shop, the Integrated Assessment Report. We are consulting widely so would be grateful if these could be made available for viewing should you be approached for them.

I have set out below a little of what the GMSF is about and how people can respond.

Please note that the consultation is being handled centrally and only the contact details listed should be used and responses should not be sent to Bolton council.

### What is the GMSF?

Over the next twenty years there is a need to deliver continued sustainable economic growth, creating more jobs and new homes for the people of Greater Manchester.

The ten local authorities in Greater Manchester are working together to deliver this growth and to ensure that these new homes and jobs are provided in the right places with the transport infrastructure (roads, rail and public transport) and other infrastructure to support the communities and manage growth sustainably.



The draft Greater Manchester Spatial Framework sets out:

- How much housing and employment land is needed up to 2035.
- A number of strategic sites across Greater Manchester to assist in meeting these requirements.
- The importance of infrastructure such as, health, education, transport, green spaces and utilities to support neighbourhoods and employment.
- Ways to protect and improve the natural environment.

For further information on the consultation please visit:

[www.greatermanchester-ca.gov.uk/GMSF](http://www.greatermanchester-ca.gov.uk/GMSF)

## How can people respond?

Responses to the consultation may be made:

- Online at <http://gmsf-consult.objective.co.uk> or
- By email to [GMSF@agma.gov.uk](mailto:GMSF@agma.gov.uk)
- By Post to : **Greater Manchester Integrated Support Team**  
**PO Box 532**  
**Town Hall**  
**Manchester**  
**M60 2LA**

All comments must be received **by 17:00 on 23rd December 2016.**

Please note all comments will be held by the Greater Manchester Combined Authority and will be available to view publicly. Comments cannot be treated as confidential. Your personal information, such as your postal and e-mail address will not be published, but your name and organisation (if relevant) will.

The Greater Manchester Combined Authority maintains a database of consultees who wish to be kept informed about the Greater Manchester Spatial Framework. In responding to this consultation your contact details will automatically be added to the consultation database. If you do not want to be contacted about future Greater Manchester Spatial Framework consultations please state this in your response.

If you require any further information on the consultation please do not hesitate to contact the Greater Manchester Planning Team on: 0161 237 4636.

Please contact me or other members of Planning Strategy if you have any local queries.

Many thanks again for your assistance.

Andrew Chalmers



## Appendix 8 – Regulation 18 2019 Consultation - Bolton Council website text during the GMSF consultation

### Greater Manchester's Plan for Homes, Jobs and the Environment: Greater Manchester Spatial Framework – Draft Consultation

We are currently consulting on Greater Manchester's Plan for Homes, Jobs and the Environment, also known as the Greater Manchester Spatial Framework, and residents are currently being invited to share their views.

You can view the plan and all the supporting documents [here](#).

The plan sets out how we will make Greater Manchester one of the best places to live and work in the world. It is being produced by all 10 councils working together in partnership, which will ensure that we have the right land available in the right places to deliver the homes and jobs we need up to 2037. It will also identify the new infrastructure such as transport, schools, health centres and utility networks required to achieve this. We consulted on a previous version of the plan in 2016 and have taken those comments into account in the current draft.

There are several ways to have your say on the plans:

- Online at <https://www.gmconsult.org/>
- By email to: [planningandhousing@greatermanchester-ca.co.uk](mailto:planningandhousing@greatermanchester-ca.co.uk)
- By post to Planning Team Consultation, Greater Manchester Combined Authority, 1<sup>st</sup> Floor Churchgate House, 56 Oxford Road, Manchester.

The consultation is running for eight weeks and all comments must be received by March 18<sup>th</sup> 2019. Paper copies of the documents are available for public inspection at Bolton Central Library and the One Stop Shop in Bolton Town Hall. You will be able to access the plan online at any of the libraries in the Borough.

Consultation events are also being held to allow people to view the documents and talk to planners. Bolton Council is holding events at:

- Carnegie Hall, Westhoughton Town Hall, Library Street, BL5 3AW on Monday 25<sup>th</sup> February 2019 from 2pm to 7pm
- Friends' Meeting House, 50 Silverwell Street, BL1 1PP on Wednesday 6<sup>th</sup> 2019 from 2pm to 7pm

All Greater Manchester events can be found at [www.gmconsult.org](http://www.gmconsult.org)

## **Appendix 9 – Regulation 18 2019 Consultation - Bolton Council press release January 6<sup>th</sup> 2019**

### **Bolton protects green belt from housing in regional plan**

Council chiefs have not allocated any housing sites on the green belt in Bolton in the latest draft spatial framework plan.

Greater Manchester's vision for homes, jobs and the environment from 2018 to 2037 has now been published.

And locally, Bolton Council leaders have protected the green belt and removed proposed green belt sites for housing – the only council in the region to do so.

The authority is also proposing to reclassify two new sites as green belt land – Horwich Golf Course and Ditchers Farm in Westhoughton.

This will give additional protection to prevent unwanted housing development.

The original plan proposed building 16,800 new homes contributing to a Greater Manchester figure of 227K houses.

The target regionally has reduced to 201K and Bolton is now proposing 13,940 new homes solely on urban sites.

Leader of Bolton Council, Cllr Linda Thomas, said: "A lot of work has gone on behind the scenes for us to get to this stage with the plan.

"We have listened to the responses and concerns raised locally and we are doing everything we can to protect the green belt, which we know is really important for our residents.

"This plan will not touch the green belt for housing in our town. In fact, some sites will now be put into green belt to protect them from unwanted development.

"Urban and brownfield sites are our focus and we are already working with our partners to deliver new much needed homes.

"Our £1 billion masterplan is leading the way on this, with our injection as a council of £100M acting as the catalyst."

New housing originally proposed at green belt sites in North Bolton and Hulton Park, and on protected open land at Bowlands Hey and Lee Hall have been removed.

And Bolton is still on track to meet its housing targets from brownfield and urban sites.

Executive Cabinet Member for Housing, Cllr Martin Donaghy, described the revised proposals as "good news for our town".

He said: "Making sure our residents have a choice of good quality housing is vital and we need to make sure we have the right mix of homes across Bolton.

"But we know that communities were concerned about the amount of green belt land allocated for housing.

“We have worked really hard to get to this stage - where our target can be delivered using urban sites alone and I’m sure that many people will be pleased about this.”

The town will also contribute 830,000 sq m of industrial and warehousing floorspace towards the region’s 4.82 million sq m target.

Around half of Bolton’s allocation for this is set to be in the urban area while others are on strategic sites with important transport links.

Cllr Donaghy added: “A healthy economy is vital for our town to create new jobs for our residents. We know developers require land of a certain type and size and we have done everything we can to minimise using green belt sites.

“Even with the proposed new employment sites overall there would be a very small reduction - only 1.97 per cent - in the total area of green belt in Bolton.”

The previous draft plan would have seen Bolton lose 5.3 per cent of its green belt land.

Subject to approval at a special Greater Manchester Combined Authority meeting on January 11, an eight-week public consultation will start on January 21.

Two consultation drop-in events will be held in Bolton where people can view the documents and find out more information.

The first event will be held at Carnegie Hall, Westhoughton Town Hall, Library Street, BL5 3AW on February 25, from 2pm to 7pm.

Another drop-in will take place at Friends’ Meeting House, 50 Silverwell Street, BL1 1PP on March 6, from 2pm to 7pm.

People can view the plan and all the supporting documents at [www.gmconsult.org](http://www.gmconsult.org).

**Ends**

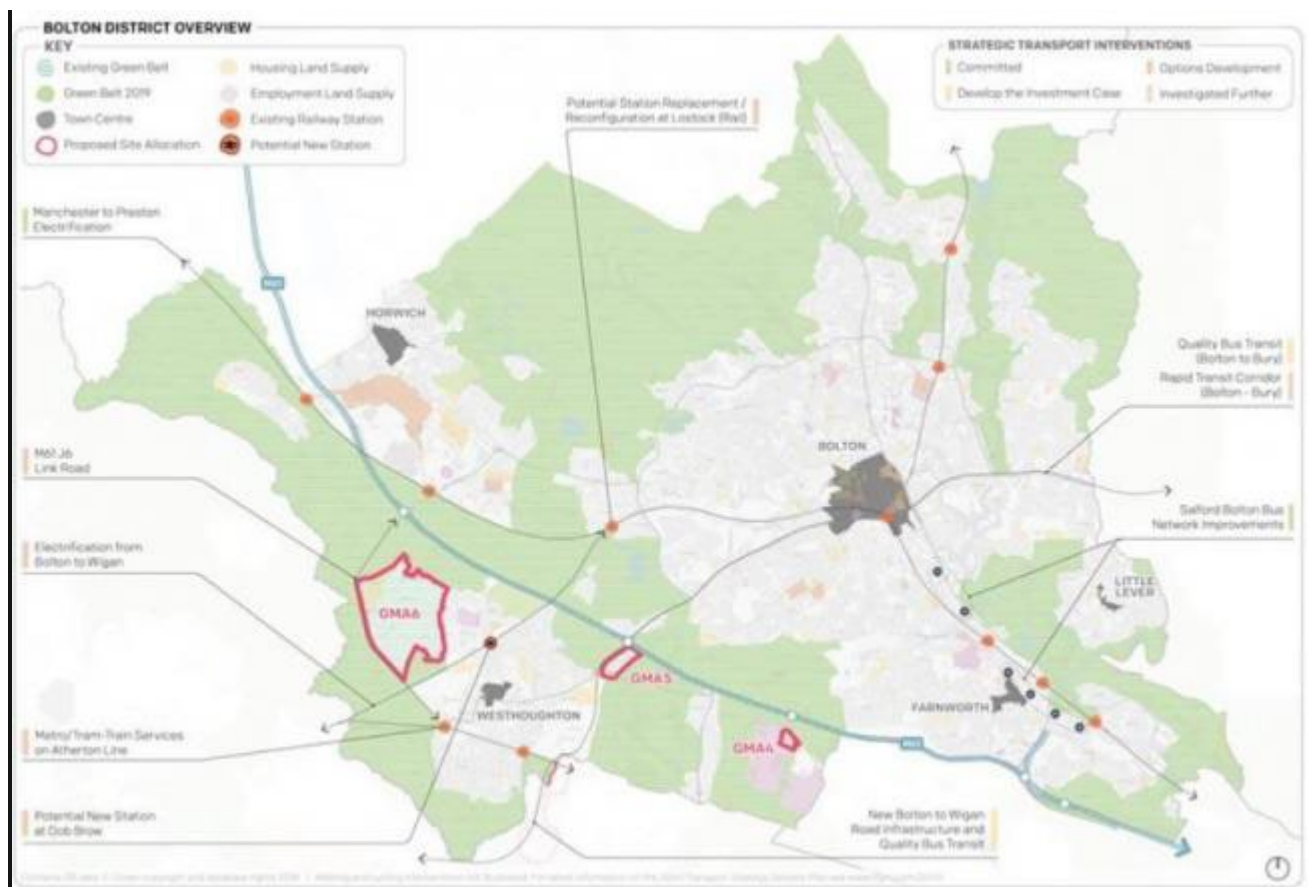
**Salma Nakhuda, Media Team, Bolton Council**

## Appendix 10 – Regulation 18 2019 Consultation - Text of Bolton News article at beginning of consultation period

# Online consultation for Greater Manchester Spatial Framework begins



By [Joseph Timan](#) [josephtiman](#) Local Democracy Reporter



Bolton District Overview of the Greater Manchester Spatial Framework

[1 comment](#)

**YOU can now leave your comments on the 20-year plan for **homes**, **jobs** and the environment online.**

The public consultation for Greater Manchester Spatial Framework officially begins next week but the plans were added to the GM consultation website yesterday.

Two consultation drop-in events will be held in Bolton where people can view the documents and find out more information.

The first will be at **Westhoughton** Town Hall on February 25, from 2pm to 7pm.

Another will take place at Friends' Meeting House on March 6, from 2pm to 7pm.

To leave your feedback online, visit [www.gmconsult.org](http://www.gmconsult.org).

# **Appendix 11 – Regulation 18 2019 Consultation - Press briefing January 2019**

## **Key points for press briefing 4<sup>th</sup> January 2019**

### **Background**

The GMSF sets out how we will make Greater Manchester one of the best places to live and work in the world. It is being produced by all 10 councils working together in partnership, and will ensure that we have the right land available in the right places to deliver the homes and jobs we need up to 2037. It will also identify the new infrastructure such as transport, schools, health centres and utility networks required to achieve this.

Consultation took place on a first draft of the GMSF in 2016/17 and we have listened to those responses in formulating this second draft.

### **Timetable for consultation**

The meeting of the Greater Manchester Combined Authority will consider the draft GMSF on Friday, January 11<sup>th</sup>.

If it is approved then there will be a period of public consultation starting on Monday, 21<sup>st</sup> January and finishing on Monday, 18<sup>th</sup> March.

Anybody can respond to the consultation; all consultation response should be returned to the GMCA and not the council.

The council is organising public drop-in sessions on the draft GMSF in the Carnegie Hall, Westhoughton Town Hall, Library Street, BL5 3AW on Monday 25th February from 2pm to 7pm and in the Friends' Meeting House, 50 Silverwell Street, BL1 1PP on Wednesday 6th March from 2pm to 7pm.

All documents will be available on the GMCA website; paper copies of the GMSF will be available for inspection at Bolton Central Library and the One Stop Shop in Bolton Town Hall.

### **Draft GMSF content**

The GMSF contains a wide range of policies on issues such as

- Carbon reduction commitments; flood risk and clean air
- Culture and heritage; education; health; and sport and recreation
- Biodiversity and geodiversity; natural greenspace; landscape; green belt
- Digital connectivity; cycling and walking; public transport; highways, freight and logistics

Consultation responses are likely to focus on housing and employment, and the sites that are need to meet development requirements up to 2037.

### **Housing**

Bolton has a requirement of 734 new dwellings a year between 2018 and 2037; this compares to 840 new dwellings a year between 2015 and 2035 in the 2016 version. This reduction has enabled Bolton to say that there should be no sites for housing in the green belt or on protected open land sites in the new draft GMSF. This compares with the

2016 draft GMSF which provisionally identified sites for housing at Chequerbent / Hulton Park, west of Westhoughton and in an area of search in North Bolton.

**None** of these sites is identified for housing in the latest version of the GMSF.

(note that the council's position on the planning application for Hulton Park is still to support it, but the GMSF does not propose to remove any of the Hulton Park land from the Green Belt.

## **Employment**

New office employment in Bolton will be concentrated in the town centre, as it was in the 2016 draft GMSF

Greater Manchester as a whole requires 4.82 million square metres of industrial and warehousing floorspace between 2018 and 2037. Bolton is contributing 830,000 square metres of this. Much of this is in the urban area but because there is insufficient urban land to meet the requirement it includes 486,000 sq m in the current green belt at three sites

- Land west of Wingates (440,000 sq metres)
- Land at Chequerbent North (25,000 sq metres)
- Land at Bewshill Farm (21,000 sq metres)

The 2016 draft GMSF identified Land west of Wingates and Chequerbent North as sites for employment. There is no change to these proposals in principle, but the policies have been adjusted to demonstrate what supporting infrastructure is needed.

Bewshill Farm is a newly identified site. If it were built, then it would form an extension to Logistics North.

## **Green Belt**

No housing sites are being allocated in the Green Belt in Bolton.

Although the three new employment sites will result in a reduction to the Green Belt, two sites, Ditchers Farm in Westhoughton and Horwich Golf Course will be added to the Green Belt.

Overall there will be a net loss of Bolton's Green Belt of 142.7ha. This is a reduction of only 1.97% in the total area of Green Belt. 7083 ha of Green Belt will remain which is 50.7% of the total area of the borough.

## **What happens after March**

All the consultation responses will be analysed and a new version of the GMSF will be prepared to take them into account. We will then look to consult again in summer of 2019. Following that the timetable would be

- A plan examination in 2020
- Plan adoption in late 2020 / early 2021.

# Appendix 12 – Regulation 18 2019 Consultation - Publication letter to consultees

Date: 18<sup>th</sup> January 2019  
Your  
Our Ref: DoP/PS/GMSF



**Planning Strategy**  
**Department of Place**  
Bolton Town Hall  
Bolton  
BL1 1RU  
Tel: 01204 333218

**LDFconsultation@bolton.gov.uk**

Dear Sir or Madam,

## **Greater Manchester Spatial Framework**

Public consultation on the revised Greater Manchester Spatial Framework runs from **21 January to 18 March 2019**. During this time, we would welcome any comments you may have on this document, together with the Integrated Assessment Report and other background papers.

Over the next twenty years there is a need to deliver continued sustainable economic growth, creating more jobs and new homes for the people of Greater Manchester.

The ten local authorities in Greater Manchester are working together to deliver this growth and to ensure that these new homes and jobs are provided in the right places with the transport infrastructure (roads, rail and public transport) and other infrastructure to support the communities and manage growth sustainably.

The revised Greater Manchester Spatial Framework sets out:

- How much housing and employment land is needed up to 2037.
- A number of strategic development sites across Greater Manchester to assist in meeting these requirements. Please note that one of those strategic sites is close to your property and you may wish to check on the website below to see where this site is. Strategic development sites in Bolton are set out on pages 250-255 of the Greater Manchester Spatial Framework.
- The importance of infrastructure such as, health, education, transport, green spaces and utilities to support neighbourhoods and employment.
- Ways to protect and improve the natural environment.

Director of Place **Gerry Brough**



INVESTOR IN PEOPLE



For further information on the consultation please visit: <https://www.greatermanchester-ca.gov.uk/what-we-do/housing/greater-manchester-spatial-framework>

Paper copies of the revised Greater Manchester Spatial Framework may be viewed at Bolton Central Library and Bolton Town Hall One Stop Shop. This can also be accessed online in

borough's local libraries at Blackrod, Brightmet, Bromley Cross, Farnworth, Harwood, High Street, Horwich, Little Lever and Westhoughton.

A paper copy of the Integrated Assessment may be viewed at Bolton Central Library and Bolton Town Hall One Stop Shop.

Responses to the consultation may be made:

- Online at <https://www.gmconsult.org/> or
- By email to: [planningandhousing@greatermanchester-ca.co.uk](mailto:planningandhousing@greatermanchester-ca.co.uk)
- By Post to : Planning Team Consultation, Greater Manchester Combined Authority  
1<sup>st</sup> Floor Churchgate House  
56 Oxford Road  
Manchester  
M1 6EU

All comments must be received **by 18 March 2019**

Please note all comments will be held by the Greater Manchester Combined Authority and will be available to view publicly. Comments cannot be treated as confidential. Your personal information, such as your postal and e-mail address will not be published, but your name and organisation (if relevant) will.

The Greater Manchester Combined Authority maintains a database of consultees who wish to be kept informed about the Greater Manchester Spatial Framework. In responding to this consultation your contact details will automatically be added to the consultation database. If you do not want to be contacted about future Greater Manchester Spatial Framework consultations please state this in your response.

If you require any further information on the consultation please do not hesitate to contact the Greater Manchester Planning Team on: 0161 778 7000Yours faithfully,

Simon Godley  
Strategy Manager  
Direct Line: 01204 336111  
E-mail: [Simon.Godley@bolton.gov.uk](mailto:Simon.Godley@bolton.gov.uk)

Director of Place **Gerry Brough**



INVESTOR IN PEOPLE

# Appendix 13 – Regulation 18 2019 Consultation - News about the drop-in events on the Council Website



I'm looking for...

- Accessibility
- Listen to our website
- My Account

[Births, Marriages and Deaths](#) [Business and Licensing](#) [Environmental Health](#) [Health and Care](#) [Housing and Council tax](#) [More](#)

[Home](#) | [Latest news](#)

## Drop-in events for Spatial Framework

Thursday, 21st Feb 2019

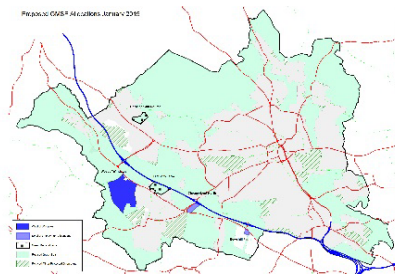
Two drop-in events will be held in Bolton for residents and businesses to have their say on Greater Manchester's Plan for Homes, Jobs and the Environment.

[Related Information](#)

Bolton Council has worked with the nine other Greater Manchester authorities to produce a joint plan, which identifies land to deliver the homes and jobs needed up to 2037.

Locally, council leaders have protected the green belt from housing – all the proposed 13,800 homes Bolton needs to meet its target are on urban and brownfield sites.

New housing originally proposed at green belt sites in North Bolton and Hulton Park, and on protected open land at Bowlands Hey and Lee Hall have been removed from the latest plan.



## **Appendix 14 – Regulation 18 2019 Consultation - Press release for the drop-in events**

**Subject:** Press release - Drop-in events for Spatial Framework  
**February 20, 2019**

### **Drop-in events for Spatial Framework**

Two drop-in events will be held in Bolton for residents and businesses to have their say on Greater Manchester's Plan for Homes, Jobs and the Environment.

Bolton Council has worked with the nine other Greater Manchester authorities to produce a joint plan, which identifies land to deliver the homes and jobs needed up to 2037.

Locally, council leaders have protected the green belt from housing – all the proposed 13,800 homes Bolton needs to meet its target are on urban and brownfield sites.

New housing originally proposed at green belt sites in North Bolton and Hulton Park, and on protected open land at Bowlands Hey and Lee Hall have been removed from the latest plan. The authority is also proposing to reclassify two new sites as green belt land – Horwich Golf Course and Ditchers Farm in Westhoughton – to give them added protection.

Two drop-in events will be held where residents can view the documents and speak to council officers and find out more.

The first event will be held at Carnegie Hall, Westhoughton Town Hall, Library Street, BL5 3AW [on February 25, from 2pm to 7pm](#).

The second drop-in will take place at Friends' Meeting House, [50 Silverwell Street, BL1 1PP on March 6, from 2pm to 7pm](#).

Executive Cabinet Member for Housing, Cllr Martin Donaghy, said: "Your views matter - after the last round of consultation, we changed the GMSF in light of feedback from our communities.

"We have protected the green belt and we are the only council in the region to remove proposed green belt sites for housing.

"We want to hear what people think works and we want your view to help us shape Bolton for the future."

The town will also contribute 830,000 sq m of industrial and warehousing floorspace towards the region's 4.82 million sq m target. Just under half of this will be on brownfield land. Cllr Donaghy added: "The redevelopment of Bolton town centre for new office jobs and housing is a key focus of the latest GMSF plan in line with our £1bn masterplan.

"We have ambitious plans to continue the economic growth of the borough and to ensure that the right new houses are provided in the right locations.

"We have made sure that Bolton's green belt is protected from housing development but we cannot deliver on the regional employment land targets through brownfield sites alone.


"We understand developers have certain requirements from employment land but it is also vital that they put the right infrastructure in place to support developments."

For more information and to take part in the online consultation, visit [gmconsult.org](https://gmconsult.org). The consultation ends March 18, 2019.

**Ends**

## Appendix 15 – Regulation 18 2019 Consultation - Twitter and Facebook publicity for the events

Post Details

**Bolton Council**

Like Page

Published by Hootsuite [?] · March 4 ·

👉 Come to our Greater Manchester Spatial Framework drop-in event on Wednesday to find out more about Bolton's plans.


📅 6 March, 2pm - 7pm

? Friends' Meeting House, 50 Silverwell Street, BL1 1PP

**What kind of place  
do you want Greater  
Manchester to be?**

Greater Manchester's Plan for  
Homes, Jobs, and the Environment

**CONSULTATION OPEN!**  
[greatermanchester-ca.gov.uk/gmsf](http://greatermanchester-ca.gov.uk/gmsf)




🌱 **Get More Likes, Comments and Shares**  
Boost this post for £16 to reach up to 16,000 people.


**2,549**  
People Reached


**55**  
Engagements


Boost Post


 Bolton Live

2 Comments 7 Shares

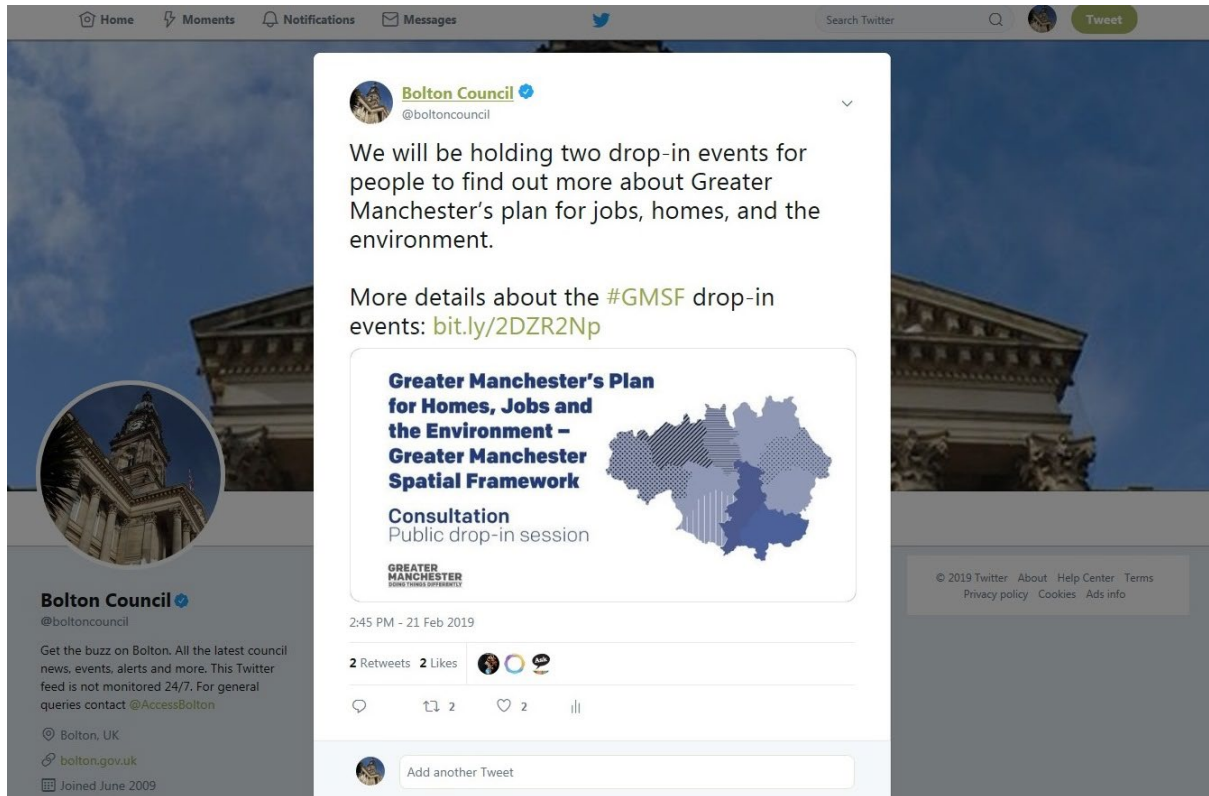
 Like

 Comment

 Share







# Appendix 16 – Regulation 18 2019 Consultation - Memorandum to Bolton Libraries and Town Hall One-Stop- Shop regarding publication

Bushra Hasan  
Department of Place  
Strategy Team  
Address: 3<sup>rd</sup> Floor, Town Hall  
Bolton BL1 1RU

# Bolton Council

## Memo

---

Bolton Libraries and One  
Stop Shop

**6 Date:**  
**14/01/2019**

**From** Bushra Hasan

6655

---

## Greater Manchester Spatial Framework (GMSF)

Bolton Council along with the other nine councils in Greater Manchester has now published the GMSF for consultation from **21 January to 18 March 2019**.

Comments can be made on this document the associated Integrated Assessment Report and other background papers which are all available online.

In the past we have pointed people to the libraries and One Stop Shop to view paper copies of consultation documents. So please find enclosed a copy of the **Greater Manchester Spatial Framework document, the Integrated Assessment Report and the GM Transport Delivery Plan (2020-2025)**. We are consulting widely I would appreciate it if these documents could be made available for viewing, should you be approached for them.

I have set out below a little of what the GMSF is about and how people can respond.

Please note that the consultation is being handled centrally and only the contact details listed should be used and responses should not be sent to Bolton council.

### What is the GMSF?

Over the next twenty years there is a need to deliver continued sustainable economic growth, creating more jobs and new homes for the people of Greater Manchester.

The ten local authorities in Greater Manchester are working together to deliver this growth and to ensure that these new homes and jobs are provided in the right places with the transport infrastructure (roads, rail and public transport) and other infrastructure to support the communities and manage growth sustainably.

The Greater Manchester Spatial Framework sets out:

- How much housing and employment land is needed up to 2037.
- A number of strategic sites across Greater Manchester to assist in meeting these requirements.
- The importance of infrastructure such as, health, education, transport, green spaces and utilities to support neighbourhoods and employment.
- Ways to protect and improve the natural environment.

For further information on the consultation please visit:

<https://www.greatermanchester-ca.gov.uk/what-we-do/housing/greater-manchester-spatial-framework/>

## How can people respond?

Responses to the consultation may be made:

- **Online at** <https://www.gmconsult.org/> **or**
- **By email to** [planningandhousing@greatermanchester-ca.co.uk](mailto:planningandhousing@greatermanchester-ca.co.uk)
- **By Post to** : Planning Team Consultation, Greater Manchester Combined Authority, 1<sup>st</sup> Floor Churchgate House, 56 Oxford Road, Manchester, M1 6EU

All comments must be received **by 18<sup>th</sup> March 2019**.

Please note all comments will be held by the Greater Manchester Combined Authority and will be available to view publicly. Comments cannot be treated as confidential. Your personal information, such as your postal and e-mail address will not be published, but your name and organisation (if relevant) will.

The Greater Manchester Combined Authority maintains a database of consultees who wish to be kept informed about the Greater Manchester Spatial Framework. In responding to this consultation your contact details will automatically be added to the consultation database. If you do not want to be contacted about future Greater Manchester Spatial Framework consultations please state this in your response.

If you require any further information on the consultation please do not hesitate to contact the Greater Manchester Planning Team on: [0161 778 7000](tel:01617787000)

Please contact me or other members of Planning Strategy if you have any local queries.

Many thanks again for your assistance.

Bushra Hasan



Bushra Hasan  
Department of Place  
Strategy Team  
Address: 3<sup>rd</sup> Floor, Town Hall  
Bolton BL1 1RU

# Bolton Council

## Memo

---

One Stop Shop

**7    Date:**  
**17/01/2019**

**From**            Bushra Hasan

6655

---

## Greater Manchester Spatial Framework (GMSF)

Bolton Council along with the other nine councils in Greater Manchester has now published the GMSF for consultation from **21 January to 18 March 2019**.

Comments can be made on this document the associated Integrated Assessment Report and other background papers which are all available online.

In the past we have pointed people to the libraries and One Stop Shop to view paper copies of consultation documents. So please find enclosed a copy of the **Greater Manchester Spatial Framework document, the Integrated Assessment Report and the GM Transport Delivery Plan (2020-2025)**. We are consulting widely I would appreciate it if these documents could be made available for viewing, should you be approached for them.

I have set out below a little of what the GMSF is about and how people can respond.

Please note that the consultation is being handled centrally and only the contact details listed should be used and responses should not be sent to Bolton council.

### What is the GMSF?

Over the next twenty years there is a need to deliver continued sustainable economic growth, creating more jobs and new homes for the people of Greater Manchester.

The ten local authorities in Greater Manchester are working together to deliver this growth and to ensure that these new homes and jobs are provided in the right places with the transport infrastructure (roads, rail and public transport) and other infrastructure to support the communities and manage growth sustainably.

The Greater Manchester Spatial Framework sets out:

- How much housing and employment land is needed up to 2037.

- A number of strategic sites across Greater Manchester to assist in meeting these requirements.
- The importance of infrastructure such as, health, education, transport, green spaces and utilities to support neighbourhoods and employment.
- Ways to protect and improve the natural environment.

For further information on the consultation please visit:

<https://www.greatermanchester-ca.gov.uk/what-we-do/housing/greater-manchester-spatial-framework/>

## How can people respond?

Responses to the consultation may be made:

- **Online at** <https://www.gmconsult.org/> **or**
- **By email to** [planningandhousing@greatermanchester-ca.co.uk](mailto:planningandhousing@greatermanchester-ca.co.uk)
- **By Post to** : Planning Team Consultation, Greater Manchester Combined Authority, 1<sup>st</sup> Floor Churchgate House, 56 Oxford Road, Manchester, M1 6EU

All comments must be received **by 18 March 2019**.

Please note all comments will be held by the Greater Manchester Combined Authority and will be available to view publicly. Comments cannot be treated as confidential. Your personal information, such as your postal and e-mail address will not be published, but your name and organisation (if relevant) will.

The Greater Manchester Combined Authority maintains a database of consultees who wish to be kept informed about the Greater Manchester Spatial Framework. In responding to this consultation your contact details will automatically be added to the consultation database. If you do not want to be contacted about future Greater Manchester Spatial Framework consultations please state this in your response.

If you require any further information on the consultation please do not hesitate to contact the Greater Manchester Planning Team on: [0161 778 7000](tel:01617787000)

Please contact me or other members of Planning Strategy if you have any local queries.

Many thanks again for your assistance.

Bushra Hasan

## **Appendix 17 – Regulation 19 2021 Consultation - Bolton webtext for Publication**

# **Greater Manchester spatial framework**

## **Greater Manchester's plan for homes, jobs and the environment**

Up until December 2020 the ten Greater Manchester local authorities were working on a joint development plan document known as Greater Manchester's Plan for Jobs, Homes & the Environment (known as the "GMSF"). This had reached its Regulation 19 (Publication) stage of the process, but Stockport Council's decision to withdraw from the plan signalled the end of the GMSF. Work has however continued to prepare a plan for the remaining districts now called "Places for Everyone".

## **Places for Everyone**

Places for Everyone is a long-term plan of nine Greater Manchester districts (Bolton, Bury, Manchester, Oldham, Rochdale, Salford, Tameside, Trafford and Wigan) for jobs, new homes, and sustainable growth. It has been prepared by the GMCA on behalf of the nine districts.

The plan will determine the kind of development that takes place across the city-region, maximising the use of brownfield land and urban spaces while protecting green belt land from the risk of unplanned development.

It will also ensure all new developments are sustainably integrated into Greater Manchester's transport network or supported by new infrastructure.

The plan is the result of a process that began with the publication of the first Greater Manchester Spatial Framework in 2016 and has been informed by the feedback received from residents, businesses and the development industry.

We have now produced what we consider to be our final plan, the one we want to submit to the Secretary of State.

Before we do that, we want you to tell us if you think the plan is 'sound' as set out in Government policy and whether we have complied with the necessary legal requirements. A period for representations is taking place between 9 August and 3 October 2021.

Following this we intend to submit the plan to the Secretary of State, together with all the supporting documents / background evidence and any representations received during this final stage of consultation. Independent Inspector(s) will then be appointed to undertake an independent examination into the plan.

You can read the plan and supporting documents in full and find out more information about the proposals by going to [www.greatermanchester-ca.gov.uk/placesforeveryone](http://www.greatermanchester-ca.gov.uk/placesforeveryone).

While the PfE sets out the strategy and policies to guide sustainable growth it also proposes to allocate sites for development across Greater Manchester, which are currently Green Belt. In Bolton three sites are proposed for employment uses. Further details on these can be found in the Allocation Topic Papers.

The three sites are:

- JPA4 Bewshill Farm (5.6 ha)
- JPA5 Chequerbent North (16.3 ha)
- JPA6 West of Wingates (184.3 ha)

The plan also proposes two green belt additions in Bolton. These are at Horwich Golf Club (24.1 ha) and Ditcher's Farm, Westhoughton (41.3ha).

## How to take part

The public consultation on this plan will take place on [www.GMConsult.org](http://www.GMConsult.org) from Monday, **August 9 until Sunday, October 3**.

You can also send a consultation response by email to [placesforeveryone@greatermanchester-ca.gov.uk](mailto:placesforeveryone@greatermanchester-ca.gov.uk)

or by post to:

Planning and Housing team,  
Greater Manchester Combined Authority,  
Broadhurst House,  
56 Oxford Street,  
Manchester  
M1 6EU

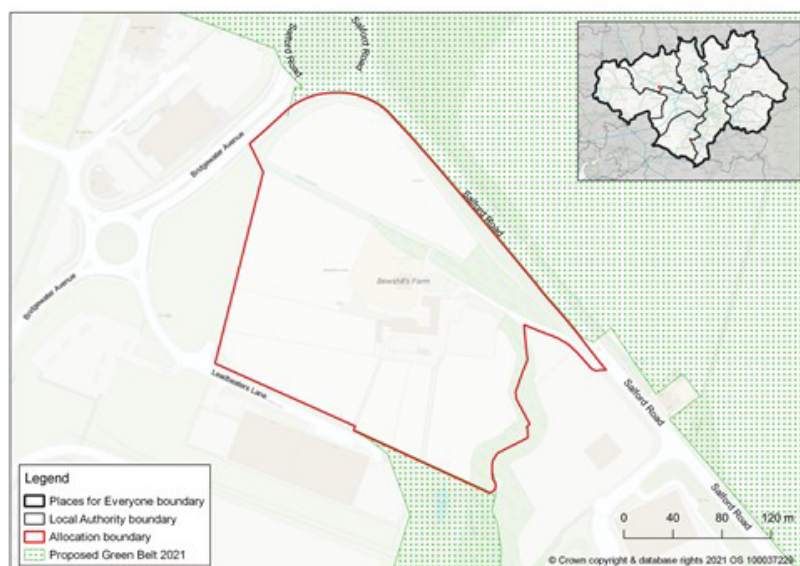
# Appendix 18 – Regulation 19 2021 Consultation - Example of site notices displayed, location plans and photos

Places for Everyone

## Proposed Site Allocation

Places for Everyone is a long-term plan of nine Greater Manchester districts (Bolton, Bury, Manchester, Oldham, Rochdale, Salford, Tameside, Trafford and Wigan) for jobs, new homes, and sustainable growth. It has been prepared by Greater Manchester Combined Authority on behalf of the nine districts.

In partnership with nine districts, it will help meet the city-region's needs up until 2037.



Land at Bewshill Farm has been allocated as an employment site for around 21,000 sqm of industrial and warehousing floorspace as part of the Joint Development Plan.

For further information on the plan and supporting evidence, and to submit your comments please visit [www.gmconsult.org](http://www.gmconsult.org)

If you cannot access this information online, please call 0161 778 7006, where you can leave your name and telephone number on an answerphone and someone will return your call.

**Consultation is open from 9 August 2021 to 3 October 2021.**



**GREATER  
MANCHESTER**  
DOING THINGS DIFFERENTLY

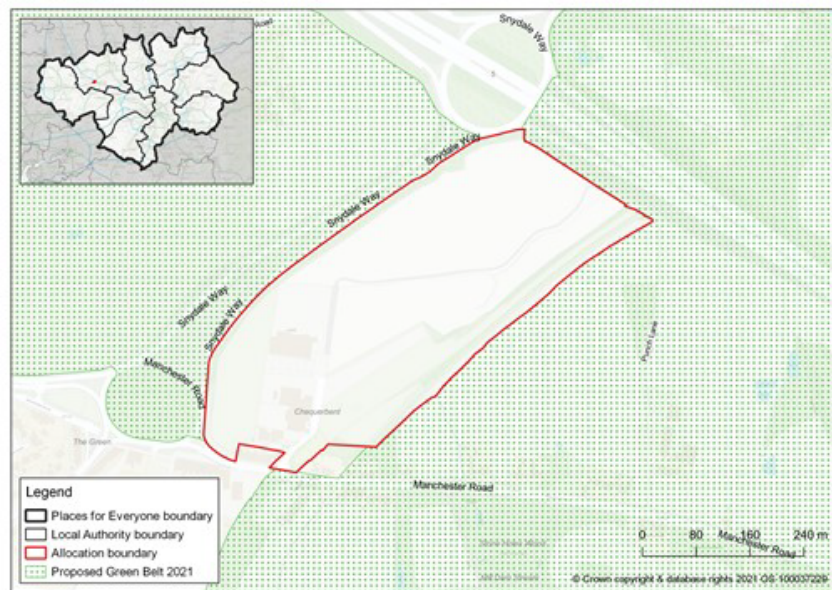
Please do not remove this notice until 3 October 2021.

[gmconsult.org](http://gmconsult.org)

# Proposed Site Allocation

Places for Everyone is a long-term plan of nine Greater Manchester districts (Bolton, Bury, Manchester, Oldham, Rochdale, Salford, Tameside, Trafford and Wigan) for jobs, new homes, and sustainable growth. It has been prepared by Greater Manchester Combined Authority on behalf of the nine districts.

In partnership with nine districts, it will help meet the city-region's needs up until 2037.



Land at Chequerbent North has been allocated as an employment site for around 25,000 sqm of industrial and warehousing floorspace as part of the Joint Development Plan.

For further information on the plan and supporting evidence, and to submit your comments please visit [www.gmconsult.org](http://www.gmconsult.org)

If you cannot access this information online, please call 0161 778 7006, where you can leave your name and telephone number on an answerphone and someone will return your call.

**Consultation is open from 9 August 2021 to 3 October 2021.**

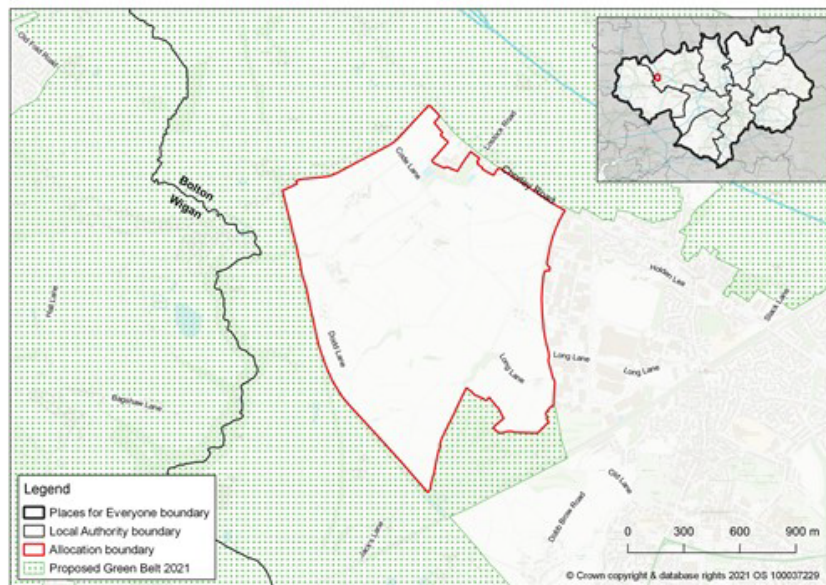




# Proposed Site Allocation

Places for Everyone is a long-term plan of nine Greater Manchester districts (Bolton, Bury, Manchester, Oldham, Rochdale, Salford, Tameside, Trafford and Wigan) for jobs, new homes, and sustainable growth. It has been prepared by Greater Manchester Combined Authority on behalf of the nine districts.

In partnership with nine districts, it will help meet the city-region's needs up until 2037.



Land at West of Wingates / M61 Junction 6 has been allocated as a site for around 440,000 sqm of employment floorspace consisting of a mix of large scale warehousing and advanced manufacturing as part of the Joint Development Plan.

For further information on the plan and supporting evidence, and to submit your comments please visit [www.gmconsult.org](http://www.gmconsult.org)

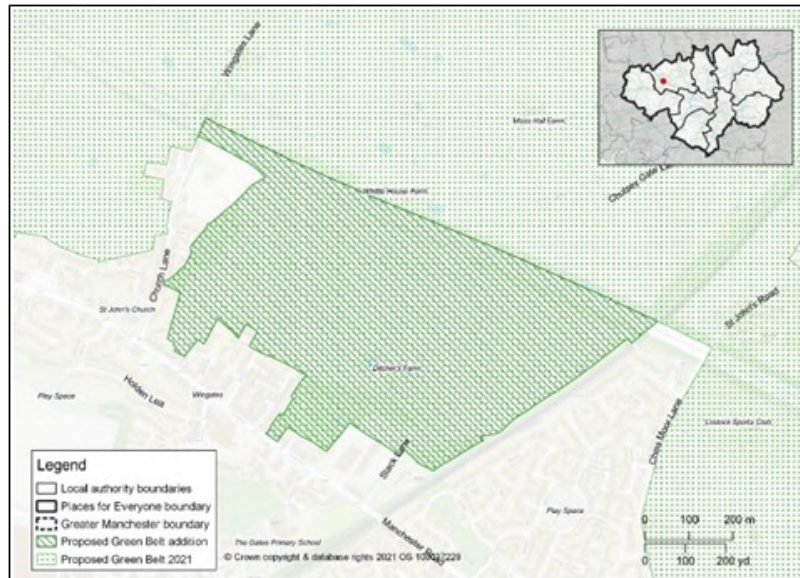
If you cannot access this information online, please call 0161 778 7006, where you can leave your name and telephone number on an answerphone and someone will return your call.

**Consultation is open from 9 August 2021 to 3 October 2021.**



# Proposed Green Belt Addition

Land at Ditchers Farm has been designated for Green Belt, as part of the 'Places for Everyone' Joint Development Plan.



Places for Everyone is a long-term plan of nine Greater Manchester districts (Bolton, Bury, Manchester, Oldham, Rochdale, Salford, Tameside, Trafford and Wigan) for jobs, new homes, and sustainable growth. It has been prepared by the Greater Manchester Combined Authority on behalf of the nine districts

In partnership with nine districts, it will help meet the city-region's needs up until 2037.

For further information on the plan and supporting evidence, and to submit your comments please visit [www.gmconsult.org](http://www.gmconsult.org)

If you cannot access this information online, please call 0161 778 7006, where you can leave your name and telephone number on an answerphone and someone will return your call.

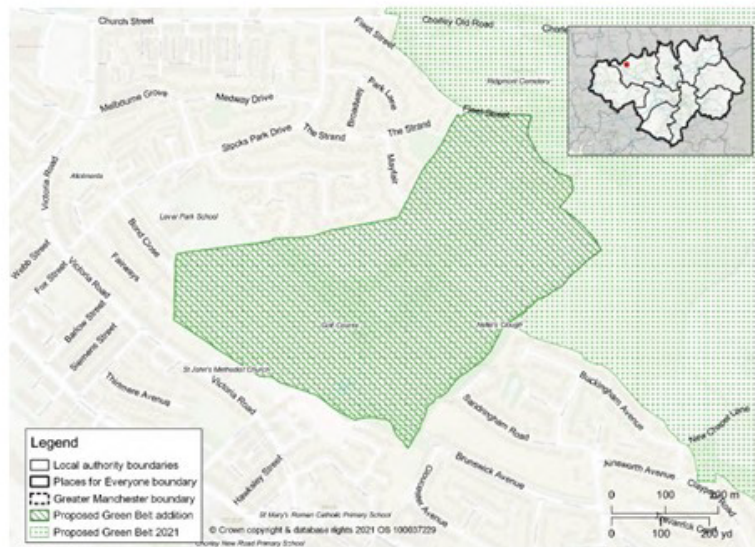
**Consultation is open from 9 August 2021 to 3 October 2021.**





# Proposed Green Belt Addition

Land at Horwich Golf Course / Knowles Farm has been designated for Green Belt, as part of the 'Places for Everyone' Joint Development Plan.



Places for Everyone is a long-term plan of nine Greater Manchester districts (Bolton, Bury, Manchester, Oldham, Rochdale, Salford, Tameside, Trafford and Wigan) for jobs, new homes, and sustainable growth. It has been prepared by the Greater Manchester Combined Authority on behalf of the nine districts

In partnership with nine districts, it will help meet the city-region's needs up until 2037.

For further information on the plan and supporting evidence, and to submit your comments please visit [www.gmconsult.org](http://www.gmconsult.org)

If you cannot access this information online, please call 0161 778 7006, where you can leave your name and telephone number on an answerphone and someone will return your call.

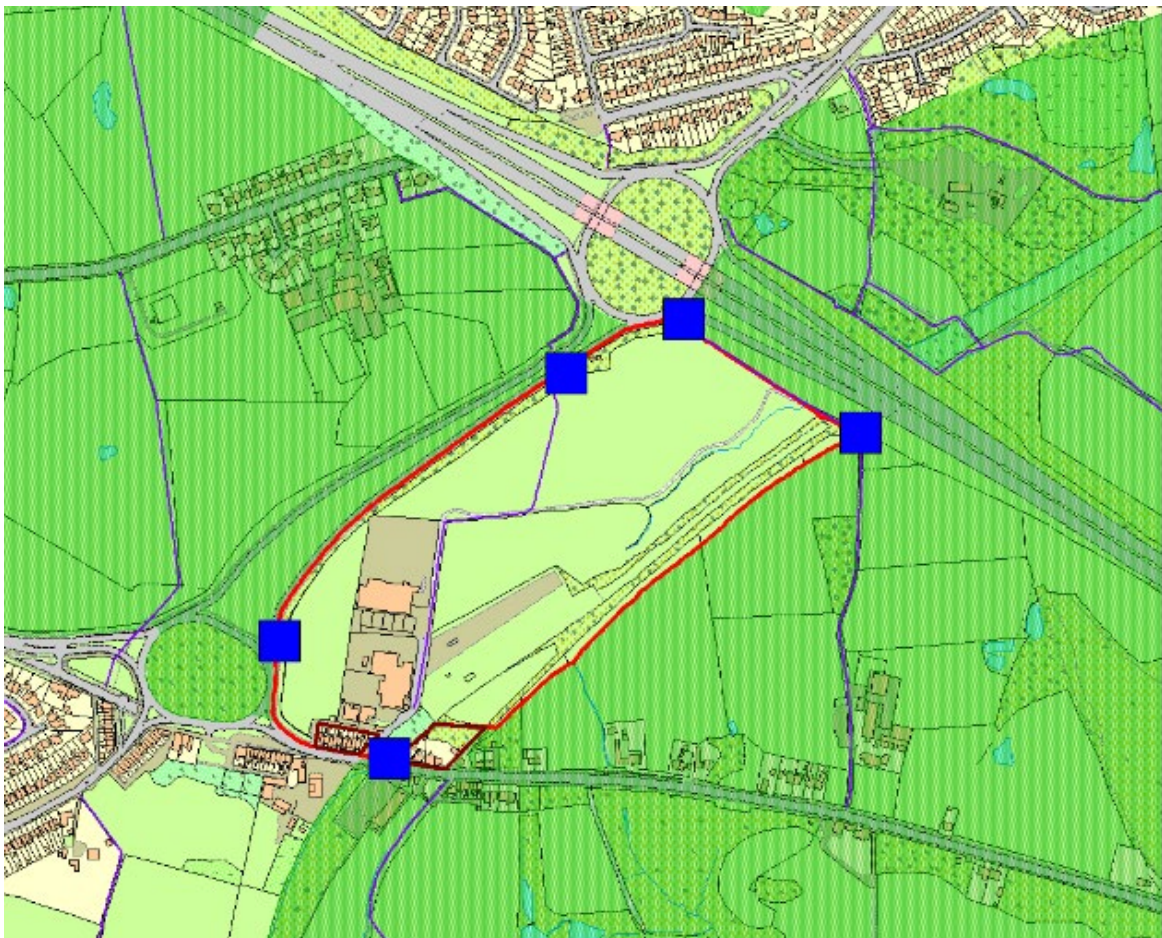
**Consultation is open from 9 August 2021 to 3 October 2021.**



SCAN ME



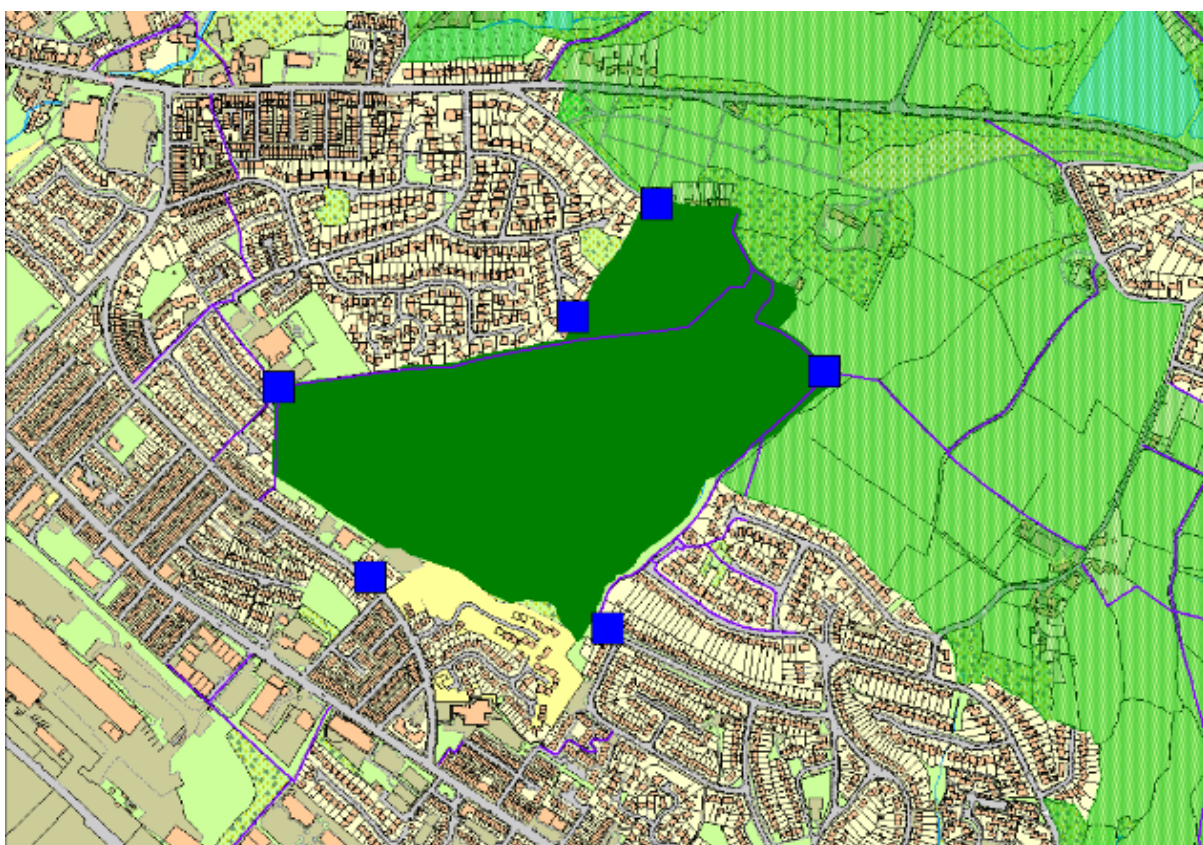
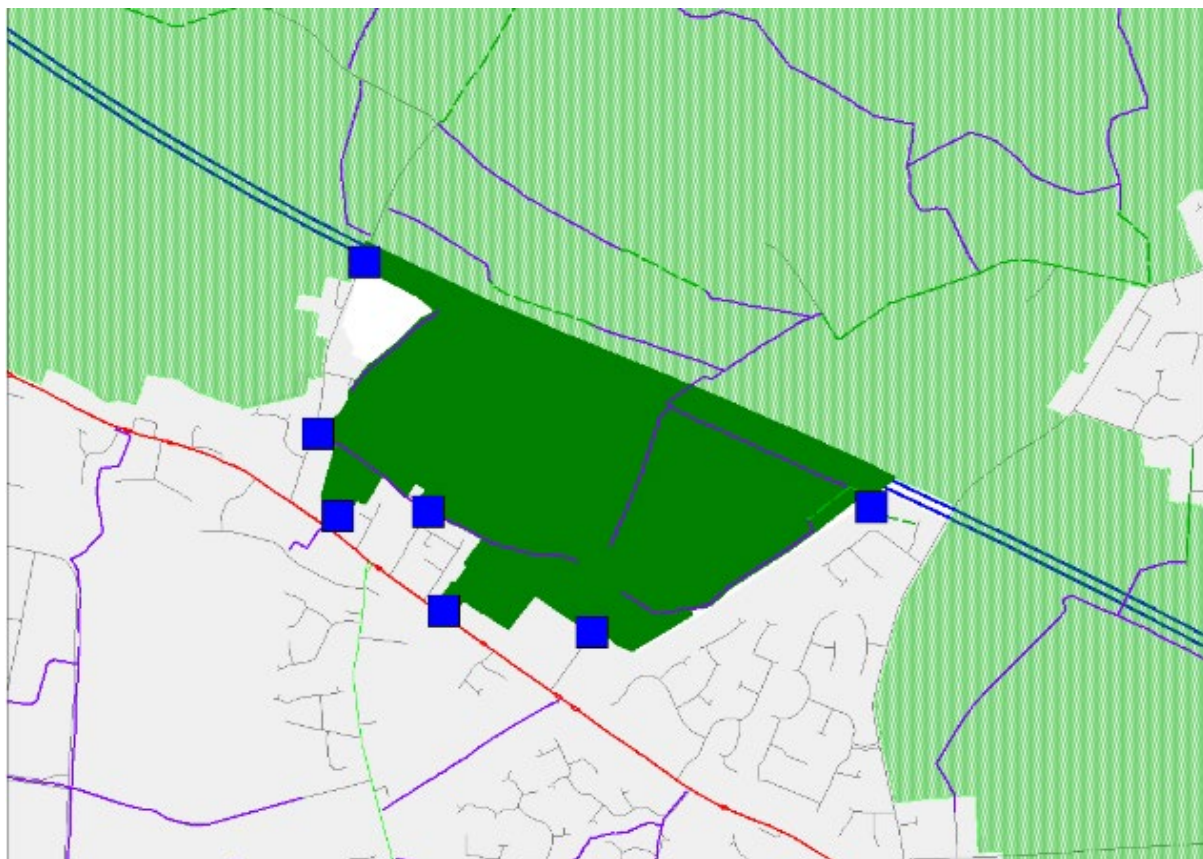
Location of site notices in blue

















## Appendix 19 – Regulation 19 2021 Consultation - Bolton News article 19/9/21

# Public consultation opens on Bolton Masterplan



By [Liv Clarke @liv\\_clarke](#) News Reporter



SITE: Land near Wingates has been identified in the plan

**BOLTON** residents have the opportunity to share their opinion on a new plan for homes, jobs and sustainable growth across Greater Manchester.

Various sites in the borough have been identified for future development in the plan - and now residents can have their say.

A public consultation on Places for Everyone launched last week and will run until October 3.

The plan sets out what kind of development can take place across the city region and identifies key sites for future housing and commercial use up to 2037.

It has been put together by Greater Manchester Combined Authority (GMCA) together with the councils in Bolton, Bury, Manchester, Oldham, Rochdale, Tameside, Trafford, Salford and Wigan.

Places for Everyone builds on earlier work preparing the Greater Manchester Spatial Framework and takes into account feedback from previous consultations.

This latest consultation phase is known as a “test of soundness” and is designed to make sure the plan has been put together in line with national policies and guidelines.

Respondents to the survey will be asked whether the plan promotes economic growth and is consistent with policies at a national level, among other issues.

Residents, businesses and local groups are encouraged to take part in the consultation, which is the final stage before the plan is submitted to the government.

The consultation is available on the GMCA website and hard copies of the plan can also be viewed at Bolton Central Library, Westhoughton Library and **Horwich** Library.

Bolton Council’s Deputy Leader, Cllr Martyn Cox, said: “The Places for Everyone plan represents a good deal for Bolton as we work to bring more jobs into the borough.

“Having a robust plan in place means we get the right types of development in the right places and also helps us resist any inappropriate developments. “It is important that as many local people, businesses and groups as possible have their say, so I urge everyone to visit the GMCA website to share their views.”

[Public consultation opens on Bolton masterplan | The Bolton News](#)

## **Appendix 20 – Regulation 19 2021 Consultation - Bolton Council social media activity**

### **Places For Everyone- social media schedule**

Thursday 12<sup>th</sup> August, 6pm, 'Protecting our Green spaces', Facebook, Instagram and Twitter

Sunday 15<sup>th</sup> August, 11am, 'Supporting our recovery from Covid-19', Facebook and Twitter

Tuesday 17<sup>th</sup> August, 10am. #Talk2UsTuesday 'Have your say'. Facebook, Instagram and Twitter

Thursday 19<sup>th</sup> August, 11am. 'The right homes in the right places. Facebook and Twitter

Tuesday 24<sup>th</sup> August, 10am. #Talk2UsTuesday 'Have your say'. Facebook, Instagram, and Twitter

Friday 27<sup>th</sup> August, 10am. 'Controlling growth for the benefit of all'. Facebook and Twitter

Tuesday 31<sup>st</sup> August, 10am. #Talk2UsTuesday 'Have your say'. Facebook, Instagram, and Twitter

Thursday 23<sup>rd</sup> September, 9am. 'Reshaping town centres. Facebook and Twitter

Monday 27<sup>th</sup> September, 10am. 'Creating good jobs. Facebook and Twitter

Thursday 30<sup>th</sup> September, 1pm. 'Have your say'. Facebook and Twitter



## **List of scheduled posts for that period of the Places for Everyone consultation.**

### **Vision Partners** - broken down into:

#### Education

- Bolton at Home
- Bolton College
- Bolton University
- Ladybridge School
- Education & Youth Team

#### Police

- GMP

#### Faith

- Bolton Parish Church
- Interfaith partnership
- BCOM
- Bolton Hindu Forum

#### Charities

- CVS

#### Heath

- CCG
- NHS Foundation Trust
- Bolton Cares
- Public Health

#### Culture

- Octagon
- Bolton Wanderers Community Trust

#### Business

- Invest in Bolton team – website/e-bulletins, etc

#### Protected Groups

- A number of groups representing protected characteristics across the borough

#### Members

## Places For Everyone Consultation- Social media insight report

### **Thursday 12<sup>th</sup> August, 6pm, 'Protecting our green spaces'**

#### Facebook

Reach	742
Engagement	3
Likes	0
Comments	0
Shares	0
Post clicks	3
Photo views	1
Link clicks	1
Other clicks	1
Negative feedback	1 (hide post)

#### Twitter

Impressions	1,701
Total engagements	19
Link clicks	5
Detail expands	5
Retweets	3
Media engagements	3
Likes	2
Replies	1
Profile clicks	0

### **Sunday 15<sup>th</sup> August, 11am, 'Supporting our recovery from Covid-19'**

#### Facebook

Reach	1,103
Engagement	4
Likes	1
Comments	0
Shares	0
Post clicks	3
Photo views	0
Link clicks	3
Other clicks	0
Negative feedback	3 (hide post)

#### Twitter

Impressions	1,239
Total engagements	9
Link clicks	1
Detail expands	5
Retweets	1
Media engagements	2
Likes	0
Replies	0
Profile clicks	0

**Tuesday 17<sup>th</sup> August, 10am. 'Have your say'****Facebook**

Reach	2,570
Engagement	65
Likes	1 (laugh)
Comments	2
Shares	3
Post clicks	59
Photo views	1
Link clicks	5
Other clicks	53
Negative feedback	3 (hide post)

**Twitter**

Impressions	1,227
Total engagements	6
Link clicks	3
Detail expands	2
Retweets	1
Media engagements	0
Likes	0
Replies	0
Profile clicks	0

**Thursday 19<sup>th</sup> August, 11am. 'The right homes in the right places'****Facebook**

Reach	1,292
Engagement	25
Likes	1
Comments	1
Shares	0
Post clicks	23
Photo views	0
Link clicks	4
Other clicks	19
Negative feedback	3 (hide post)

**Twitter**

Impressions	1,366
Total engagements	21
Link clicks	2
Detail expands	13
Retweets	2
Media engagements	3
Likes	0
Replies	0
Profile clicks	1

**Tuesday 24<sup>th</sup> August, 10am. 'Have your say'****Facebook**

Reach	838
Engagement	1
Likes	0
Comments	0
Shares	0
Post clicks	1
Photo views	1
Link clicks	0
Other clicks	0
Negative feedback	3 (hide post)

**Twitter**

Impressions	1,128
Total engagements	3
Link clicks	0
Detail expands	1
Retweets	0
Media engagements	2
Likes	0
Replies	0
Profile clicks	0

**Friday 27<sup>th</sup> August, 10am. 'Controlling growth for the benefit of all'****Facebook**

Reach	613
Engagement	1
Likes	0
Comments	0
Shares	0
Post clicks	1
Photo views	0
Link clicks	1
Other clicks	0
Negative feedback	1 (hide post)

**Twitter**

Impressions	909
Total engagements	7
Link clicks	1
Detail expands	4
Retweets	0
Media engagements	0
Likes	0
Replies	0
Profile clicks	2

**Tuesday 31<sup>st</sup> August, 10am. 'Have your say'****Facebook**

Reach	772
Engagement	1
Likes	0
Comments	0
Shares	0
Post clicks	1
Photo views	1
Link clicks	0
Other clicks	0
Negative feedback	2 (hide post)

**Twitter**

Impressions	732
Total engagements	2
Link clicks	0
Detail expands	2
Retweets	0
Media engagements	0
Likes	0
Replies	0
Profile clicks	0

**Thursday 23<sup>rd</sup> September, 9am. 'Reshaping town centres'****Facebook**

Reach	639
Engagement	2
Likes	0
Comments	0
Shares	0
Post clicks	2
Photo views	0
Link clicks	1
Other clicks	1
Negative feedback	3 (hide post)

**Twitter**

Impressions	639
Total engagements	4
Link clicks	3
Detail expands	0
Retweets	0
Media engagements	1
Likes	0
Replies	0
Profile clicks	0

**Monday 27<sup>th</sup> September, 10am. 'Creating good jobs'****Facebook**

Reach	564
Engagement	0
Likes	0
Comments	0
Shares	0
Post clicks	0
Photo views	0
Link clicks	0
Other clicks	0
Negative feedback	1 (hide post)

**Twitter**

Impressions	833
Total engagements	7
Link clicks	2
Detail expands	4
Retweets	1
Media engagements	0
Likes	0
Replies	0
Profile clicks	0

**Thursday 30<sup>th</sup> September, 1pm. 'Have your say'****Facebook**

Reach	591
Engagement	1
Likes	0
Comments	0
Shares	0
Post clicks	1
Photo views	0
Link clicks	1
Other clicks	0
Negative feedback	1 (hide post)

**Twitter**

Impressions	691
Total engagements	4
Link clicks	1
Detail expands	0
Retweets	1
Media engagements	2
Likes	0
Replies	0
Profile clicks	0

## Friday 1<sup>st</sup> October- '2-day countdown'

### Facebook

Reach	972
Engagement	4
Likes	1
Comments	0
Shares	0
Post clicks	3
Photo views	1
Link clicks	1
Other clicks	1
Negative feedback	0

### Twitter

Impressions	608
Total engagements	3
Link clicks	0
Detail expands	3
Retweets	0
Media engagements	0
Likes	0
Replies	0
Profile clicks	0

## Saturday 2<sup>nd</sup> October- '1 day countdown'

### Facebook

Reach	953
Engagement	11
Likes	0
Comments	0
Shares	1
Post clicks	10
Photo views	0
Link clicks	9
Other clicks	1
Negative feedback	2 (hide post)

### Twitter

Impressions	1,044
Total engagements	13
Link clicks	7
Detail expands	1
Retweets	2
Media engagements	2
Likes	1
Replies	0
Profile clicks	0

# Appendix 21 – Regulation 19 2021 Consultation - Bolton Council letter to consultees at Publication

Date: 6<sup>th</sup> August 2021  
Your Ref:  
Our Ref: PfE/Publication/2021  
WP No:



**Strategy**  
Directorate of Place  
Town Hall  
Bolton  
BL1 1RU

[www.bolton.gov.uk](http://www.bolton.gov.uk)

Dear Sir/Madam

## **Places for Everyone Joint Development Plan Document – Bolton, Bury, Manchester, Oldham, Rochdale, Salford, Tameside, Trafford, Wigan**

Places for Everyone Joint Development Plan Document – Bolton, Bury, Manchester, Oldham, Rochdale, Salford, Tameside, Trafford, Wigan is now out for public consultation. The consultation runs from **Monday 9th August until 23:45 on Sunday 3rd October 2021** and you are invited to make comments on the plan.

The previous iteration of the plan was called 'Greater Manchester Spatial Framework'. In December 2020 Stockport Council withdrew from the process and the plan will continue as a joint development plan of the nine other Districts in Greater Manchester, now known as 'Places for Everyone'.

Please find enclosed the Statement of Representations which explains the procedure for making representations at the next stage of the plan, including where the documents are available for inspection.

You may also have been notified of the PfE2021 consultation by the Greater Manchester Combined Authority (GMCA) if you are on their consultation database. This letter/email has been sent out to contacts held by Bolton Council who want to be updated on planning policy issues in the borough.

You can find further details of the plan, including the proposed Bolton employment allocations and Green Belt additions, links to the plan documents and details of how to respond, on our [Greater Manchester Spatial Framework webpage](#). Please note that the GMCA is co-ordinating the

Directorate of Place Development





consultation exercise and responses must be made to the GMCA in the ways set out in the attached notice.

If you require further assistance at this stage or no longer wish to receive updates on local planning policy matters including the PfE2021 please contact the Strategy Team on 01204 6109 or by email at [LDFconsultation@bolton.gov.uk](mailto:LDFconsultation@bolton.gov.uk).

Yours faithfully,

Andrew Chalmers  
Principal Development Officer (Strategy)  
Direct Line: 01204 336109  
E-mail: [Andrew.Chalmers@bolton.gov.uk](mailto:Andrew.Chalmers@bolton.gov.uk)

**Statement of Representation Procedure Notice  
(Regulation 19: The Town and Country Planning (Local Planning) (England)  
Regulations 2012)  
August 2021**

This statement relates to the Places for Everyone Joint Development Plan Publication Draft 2021 (PfE2021). A brief explanation of the background of this document and its relationship to other development plan documents being produced by the relevant nine Greater Manchester districts is provided below.

**Background**

In 2014, the ten Greater Manchester local authorities agreed to prepare a joint Development Plan Document, the Greater Manchester Spatial Framework (GMSF), with the GMCA co-ordinating its production on behalf of the ten districts. In December 2020, Stockport Council took the decision to withdraw from the GMSF. Subsequently, the nine remaining authorities (Bolton, Bury, Manchester, Oldham, Rochdale, Salford, Trafford, Tameside and Wigan), agreed to continue to progress a joint Development Plan Document for themselves, known as Places for Everyone, which will form part of their individual district local plans.

PfE2021 provides the strategic policy framework for the districts including the overall scale and distribution of development, the spatial strategy, strategic site allocations and Green Belt boundary amendments together with a number of strategic thematic policies which will be used to manage development and determine planning applications in the individual districts. PfE2021 is accompanied by a Policies Map which shows the allocations and designations in the Plan.

**Documents available for inspection**

PfE2021 and supporting/background evidence documents are published on the GMCA Website on behalf of the nine districts. Additionally, copies of PfE2021 documentation will be made available in accordance with the Town and Country Planning (Local Planning) (England) Regulations 2012 and the requirements of each district's Statement of Community Involvement (SCI). Hard copies of the PfE2021 plan are available to view in Bolton Central Library and Westhoughton Libraries. Please check the Bolton council's website at [www.bolton.gov.uk](http://www.bolton.gov.uk) for current opening hours.

**Period of Submission for Representations**

Representations are invited on the PfE 2021, Publication Draft for a period of eight weeks from Monday 9th August until 23:45 3rd October 2021.

Representations at this stage should only relate to PfE2021 and its supporting/evidence base documents which have been published alongside it. Comments made previously, during stages of consultation in relation to the GMSF, have been summarised in the Statement of Consultation report, which will form part of the submission documentation.

Whilst representations may be made on any point in respect of PfE2021 and its supporting/evidence base documents, only those pertaining to the four tests of soundness<sup>1</sup> will be taken into account by the Inspector at the Examination.

---

<sup>1</sup> Plans are sound if they are: positively prepared; justified; effective; and consistent with national policy (National Planning Policy Framework, paragraph 35)

## **How to make representations**

Representations can be made by:

- Preferably completing the online response form at: [www.gmconsult.org](http://www.gmconsult.org)
- Alternatively, downloading the response form available on the GMCA Website and emailing it to [placesforeveryone@greatermanchester-ca.gov.uk](mailto:placesforeveryone@greatermanchester-ca.gov.uk).

You can also submit your comments to us by:

- email to: [placesforeveryone@greatermanchester-ca.gov.uk](mailto:placesforeveryone@greatermanchester-ca.gov.uk)
- post to: The Planning and Housing Team, Greater Manchester Combined Authority, Broadhurst House, 56 Oxford Street, Manchester, M1 6EU

## **What Happens Next**

Once the period for making representations finishes, it is intended to submit the PfE2021 Plan to the Secretary of State for Communities and Local Government so that it can be assessed through an Examination in Public by an appointed Planning Inspector(s).

It will be the role of the Independent Planning Inspector(s) to examine whether the plan meets the tests of soundness in the National Planning Policy Framework and meets all the relevant legislative requirements. All representations received before the deadline will be submitted electronically to the Secretary of State for consideration by the Planning Inspector(s) as part of the Examination in Public. Comments and names will be published. Full details of how your information will be shared can be found in the PfE2021 Privacy Notice.

Please refer to the representation guidance notes when preparing representations.

## **How to participate in the Examination**

By using the response form you will be asked whether you wish to participate in the Examination and whether you wish to be notified of any of the following:

- Submission of the PfE2021 for independent examination.
- Publication of the Inspector's Report on the Examination of the PfE2021.
- The Adoption of the PfE2021

Alternatively, if you make representations by email or by letter, you should state whether you wish to participate in the Examination and/or be kept informed of the progress of PfE2021.

## Appendix 22 – Regulation 19 2021 Consultation - Bolton Council email to consultees at Publication

Places for Everyone Joint Development Plan Document – Bolton, Bury, Manchester, Oldham, Rochdal...



LDFconsultation

To Chalmers, Andrew



Reply

Reply All

Forward



Mon 09/08/2021 16:19



Statement of Representation Notice Bolton.pdf  
.pdf File

Places for Everyone Joint Development Plan Document – Bolton, Bury, Manchester, Oldham, Rochdale, Salford, Tameside, Trafford, Wigan is now out for public consultation. The consultation runs from **Monday 9th August until 23:45 on Sunday 3rd October 2021** and you are invited to make comments on the plan.

The previous iteration of the plan was called 'Greater Manchester Spatial Framework'. In December 2020 Stockport Council withdrew from the process and the plan will continue as a joint development plan of the nine other Districts in Greater Manchester, now known as 'Places for Everyone'.

Please find enclosed the Statement of Representations which explains the procedure for making representations at the next stage of the plan, including where the documents are available for inspection.

You may also have been notified of the PFE2021 consultation by the Greater Manchester Combined Authority (GMCA) if you are on their consultation database. This letter/email has been sent out to contacts held by Bolton Council who want to be updated on planning policy issues in the borough.

You can find further details of the plan, including the proposed Bolton employment allocations and Green Belt additions, links to the plan documents and details of how to respond, on our [Greater Manchester Spatial Framework webpage](#). Please note that the GMCA is co-ordinating the consultation exercise and responses must be made to the GMCA in the ways set out in the attached notice.

If you require further assistance at this stage or no longer wish to receive updates on local planning policy matters including the PFE2021 please contact the Strategy Team on 01204 6109 or by email at [LDFconsultation@bolton.gov.uk](mailto:LDFconsultation@bolton.gov.uk).

Regards.

**Andrew Chalmers**

**Principal Development Officer (Planning Strategy)**

Strategy Team

Directorate of Place, Bolton Council, 3<sup>rd</sup> Floor, Town Hall, Bolton, BL1 1RU

Tel: (01204) 336109

## Appendix 23 – Regulation 19 2021 Consultation - Email sent to subscriber group on Mailchimp

[View this email in your browser](#)

**Bolton  
Council**

**Planning strategy**

Places for Everyone Joint Development Plan Document, covering almost all of Greater Manchester excluding Stockport, is now out for public consultation. The consultation runs from Monday 9th August until 23:45 on Sunday 3rd October 2021 and you are invited to make comments on the plan.

The previous iteration of the plan was called 'Greater Manchester Spatial Framework'. In December 2020 Stockport Council withdrew from the process and the plan will continue as a joint development plan of the nine other Districts in Greater Manchester, now known as 'Places for Everyone'.

Please read the the [Statement of Representations](#) which explains the procedure for making representations at the next stage of the plan, including where the documents are available for inspection.

You may also have been notified of the PfE2021 consultation by the Greater Manchester Combined Authority (GMCA) if you are on their consultation database. This letter/email has been sent out to contacts held by Bolton Council who want to be updated on planning policy issues in the borough.

You can find further details of the plan, including the proposed Bolton employment allocations and Green Belt additions, links to the plan documents and details of how to respond, on our [Greater Manchester Spatial Framework webpage](#). Please note that the GMCA is co-ordinating the consultation exercise and responses must be made to the GMCA in the ways set out in the Statement of Representations.

---

If you require further assistance at this stage or no longer wish to receive updates on local planning policy matters including the PfE2021 please contact the Strategy Team on 01204 6109 or by email at [LDFconsultation@bolton.gov.uk](mailto:LDFconsultation@bolton.gov.uk)



*Copyright © 2021 Planning Strategy, All rights reserved.*

You are receiving this email because you opted in via our website.

**Our mailing address is:**

Planning Strategy  
Directorate of Place  
3rd Floor, Town Hall  
Bolton, Greater Manchester BL1 1RU  
United Kingdom

[Add us to your address book](#)

Want to change how you receive these emails?

You can [update your preferences](#) or [unsubscribe from this list](#).



## Appendix 24 – Regulation 19 2021 Consultation - Memorandum to Bolton’s libraries concerning Publication and other relevant information

Andrew Chalmers  
Directorate of Place Development  
Strategy Team  
3<sup>rd</sup> Floor, Town Hall  
Bolton BL1 1RU

# Bolton Council

## Memo

---

Bolton Libraries

**8**    **Date:**    9 August 2021

**From**    Andrew Chalmers

6109

---

### **Places for Everyone – previously called the Greater Manchester Spatial Framework (GMSF)**

Bolton Council along with the eight of the other councils in Greater Manchester has now published the PfE for consultation from **9 August to 3 October 2021**.

You may recall the previous iteration of the plan was called ‘Greater Manchester Spatial Framework’. However, in December 2020 Stockport Council withdrew from the process and the plan will continue as a joint development plan of the nine other Districts in Greater Manchester, now known as ‘Places for Everyone’.

In the past we have pointed people to the libraries to view paper copies of consultation documents. For this exercise I am only supplying paper copies of the plan to the Central Library (x2), Horwich and Westhoughton and would appreciate it if these could be made available for viewing. All the documentation is available online in any event, see weblinks below.

I have enclosed for all libraries the following:

- **Statement of Representations which explains the procedure for making representations on the plan (attached)**
- **A poster for display (if possible)**

**What is the PfE?**

Places for Everyone is a long-term plan of nine Greater Manchester districts (Bolton, Bury, Manchester, Oldham, Rochdale, Salford, Tameside, Trafford and Wigan) for jobs, new homes, and sustainable growth to 2037. It has been prepared by the GMCA on behalf of the nine districts.

The plan will determine the kind of development that takes place across the city-region, maximising the use of brownfield land and urban spaces while protecting green belt land from the risk of unplanned development.

It will also ensure all new developments are sustainably integrated into Greater Manchester's transport network or supported by new infrastructure.

### **What does it mean for Bolton?**

While the PfE sets out the strategy and policies to guide sustainable growth it also proposes to allocate sites for development across Greater Manchester, which are currently Green Belt. In Bolton three sites are proposed for employment uses. Further details on these can be found in the Allocation Topic Papers.

The three sites are:

- JPA4 Bewshill Farm (5.6 ha)
- JPA5 Chequerbent North (16.3 ha)
- JPA6 West of Wingates (184.3 ha)

The plan also proposes two green belt additions in Bolton. These are at Horwich Golf Club (24.1 ha) and Ditcher's Farm, Westhoughton (41.3ha).

You can read the plan and supporting documents in full and find out more information about the consultation by going to [www.greatermanchester-ca.gov.uk/placesforeveryone](http://www.greatermanchester-ca.gov.uk/placesforeveryone). When the consultation goes live there will also be a virtual exhibition space for people to view and made comments.

### **How can people respond?**

Representations can be made by:

- Preferably completing the online response form at: [www.gmconsult.org](http://www.gmconsult.org)
- Alternatively, downloading the response form available on the GMCA Website and emailing it to [placesforeveryone@greatermanchester-ca.gov.uk](mailto:placesforeveryone@greatermanchester-ca.gov.uk).

You can also submit your comments to GMCA by:

- email to: [placesforeveryone@greatermanchester-ca.gov.uk](mailto:placesforeveryone@greatermanchester-ca.gov.uk)
- post to: The Planning and Housing Team, Greater Manchester Combined Authority, Broadhurst House, 56 Oxford Street, Manchester, M1 6EU

All comments must be received **by 3 October 2021**.

Please note all comments will be held by the Greater Manchester Combined Authority and will be available to view publicly. Comments cannot be treated as confidential. Your personal



information, such as your postal and e-mail address will not be published, but your name and organisation (if relevant) will.

The Greater Manchester Combined Authority maintains a database of consultees who wish to be kept informed about the PfE. In responding to this consultation your contact details will automatically be added to the consultation database. If you do not want to be contacted about future progress on the PfE and further consultations, please state this in your response.

**It is worth emphasising that consultation is only via the GMCA not Bolton Council.**

Please contact me or other members of Planning Strategy if you have any local queries.  
Many thanks again for your assistance.

**Andrew Chalmers**

**Principal Development Officer (Planning Strategy)**

Strategy Team

Directorate of Place, Bolton Council, 3<sup>rd</sup> Floor, Town Hall, Bolton, BL1 1RU

Tel: (01204) 336109

**Statement of Representation Procedure Notice  
(Regulation 19: The Town and Country Planning (Local Planning) (England)  
Regulations 2012)  
August 2021**

This statement relates to the Places for Everyone Joint Development Plan Publication Draft 2021 (PfE2021). A brief explanation of the background of this document and its relationship to other development plan documents being produced by the relevant nine Greater Manchester districts is provided below.

**Background**

In 2014, the ten Greater Manchester local authorities agreed to prepare a joint Development Plan Document, the Greater Manchester Spatial Framework (GMSF), with the GMCA co-ordinating its production on behalf of the ten districts. In December 2020, Stockport Council took the decision to withdraw from the GMSF. Subsequently, the nine remaining authorities (Bolton, Bury, Manchester, Oldham, Rochdale, Salford, Trafford, Tameside and Wigan), agreed to continue to progress a joint Development Plan Document for themselves, known as Places for Everyone, which will form part of their individual district local plans.

PfE2021 provides the strategic policy framework for the districts including the overall scale and distribution of development, the spatial strategy, strategic site allocations and Green Belt boundary amendments together with a number of strategic thematic policies which will be used to manage development and determine planning applications in the individual districts. PfE2021 is accompanied by a Policies Map which shows the allocations and designations in the Plan.

**Documents available for inspection**

PfE2021 and supporting/background evidence documents are published on the GMCA Website on behalf of the nine districts. Additionally, copies of PfE2021 documentation will be made available in accordance with the Town and Country Planning (Local Planning) (England) Regulations 2012 and the requirements of each district's Statement of Community Involvement (SCI). Hard copies of the PfE2021 plan are available to view in Bolton Central Library and Westhoughton Libraries. Please check the Bolton council's website at [www.bolton.gov.uk](http://www.bolton.gov.uk) for current opening hours.

**Period of Submission for Representations**

Representations are invited on the PfE 2021, Publication Draft for a period of eight weeks from Monday 9th August until 23:45 3rd October 2021.

Representations at this stage should only relate to PfE2021 and its supporting/evidence base documents which have been published alongside it. Comments made previously, during stages of consultation in relation to the GMSF, have been summarised in the Statement of Consultation report, which will form part of the submission documentation.

Whilst representations may be made on any point in respect of PfE2021 and its supporting/evidence base documents, only those pertaining to the four tests of soundness<sup>2</sup> will be taken into account by the Inspector at the Examination.

---

<sup>2</sup> Plans are sound if they are: positively prepared; justified; effective; and consistent with national policy (National Planning Policy Framework, paragraph 35)



### **How to make representations**

Representations can be made by:

- Preferably completing the online response form at: [www.gmconsult.org](http://www.gmconsult.org)
- Alternatively, downloading the response form available on the GMCA Website and emailing it to [placesforeveryone@greatermanchester-ca.gov.uk](mailto:placesforeveryone@greatermanchester-ca.gov.uk).

You can also submit your comments to us by:

- email to: [placesforeveryone@greatermanchester-ca.gov.uk](mailto:placesforeveryone@greatermanchester-ca.gov.uk)
- post to: The Planning and Housing Team, Greater Manchester Combined Authority, Broadhurst House, 56 Oxford Street, Manchester, M1 6EU

### **What Happens Next**

Once the period for making representations finishes, it is intended to submit the PfE2021 Plan to the Secretary of State for Communities and Local Government so that it can be assessed through an Examination in Public by an appointed Planning Inspector(s).

It will be the role of the Independent Planning Inspector(s) to examine whether the plan meets the tests of soundness in the National Planning Policy Framework and meets all the relevant legislative requirements. All representations received before the deadline will be submitted electronically to the Secretary of State for consideration by the Planning Inspector(s) as part of the Examination in Public. Comments and names will be published. Full details of how your information will be shared can be found in the PfE2021 Privacy Notice.

Please refer to the representation guidance notes when preparing representations.

### **How to participate in the Examination**

By using the response form you will be asked whether you wish to participate in the Examination and whether you wish to be notified of any of the following:

- Submission of the PfE2021 for independent examination.
- Publication of the Inspector's Report on the Examination of the PfE2021.
- The Adoption of the PfE2021

Alternatively, if you make representations by email or by letter, you should state whether you wish to participate in the Examination and/or be kept informed of the progress of PfE2021.