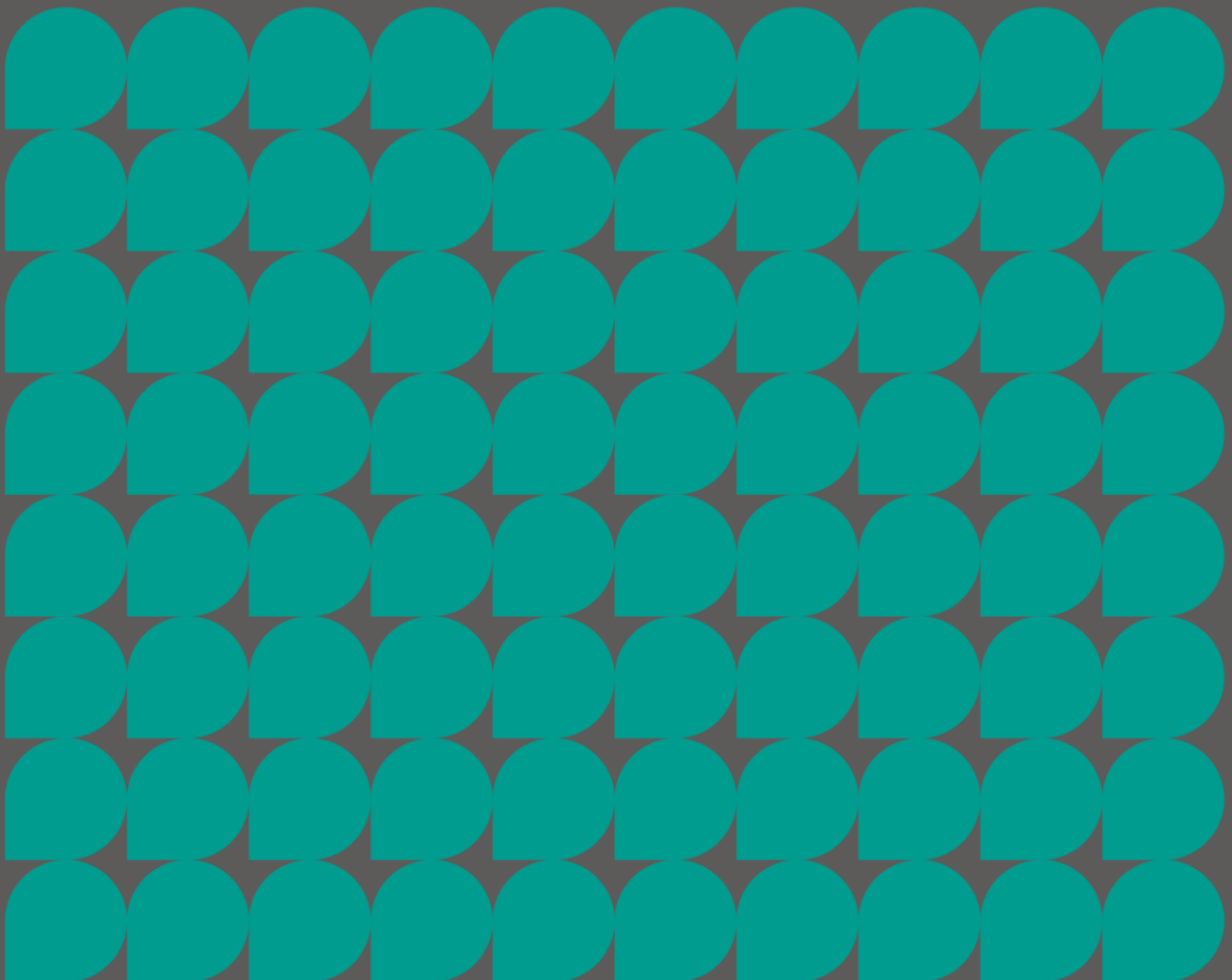


Places for Everyone

Rochdale Council Statement of Community
Involvement Compliance Statement

February 2022



Rochdale Statement of Community Involvement Summary of Compliance Consultation Regulation 18 draft Greater Manchester Spatial Framework 2016

Rochdale's Statement of Community Involvement (SCI) relevant to the 2016 draft GMSF consultation was adopted in November 2015 and sets out how and when the community will be involved in the preparation of planning documents like the Greater Manchester Spatial Framework (GMSF). This summary of how Rochdale's SCI requirements were met during the 2016 draft GMSF consultation relates to Rochdale's 2015 SCI as that was the adopted SCI at the time of the consultation.

The 2016 draft GMSF was produced as a joint Development Plan Document and therefore it is necessary to demonstrate how the consultation requirements of Rochdale's SCI have been met in relation to the preparation of this document. A copy of the Rochdale's 2015 SCI can be requested by contacting Rochdale's Strategic Planning Team.

The aim of the Rochdale SCI is to ensure that that the regulations dealing with the consultation are met, as a minimum. Paragraphs 4.32 to 4.40 of the 2015 Rochdale SCI refers to the preparation of the GMSF and outlines who, when and how people will be involved. Paragraph 4.33 states *'Work on the GMSF will be coordinated and managed by the Association of Greater Manchester Authorities (AGMA) on behalf of the ten districts. This Statement of Community Involvement sets out how the community and other stakeholders will be involved in the preparation of the joint GMSF.'*

Paragraph 4.39 outlines how people will be involved in the consultation process and states:

- *AGMA will contact appropriate organisations and individuals directly, by email or by post;*
- *AGMA will publicise consultations by methods such as the AGMA website and each of the ten districts' web sites, press releases, social media, meetings and workshops;*
- *AGMA will make consultation documents available on the AGMA website, at the principal office of each of the Greater Manchester Local Planning Authorities and at selected public libraries; and*
- *AGMA will publish comments received, or a summary of them, as soon as possible and explain how they have been taken into account in preparing the plan.¹*

A summary of the consultation methods used in the 2016 draft GMSF consultation is set out below.

¹ The exceptions to this general principle occur at the 'publication' stage of the plan when representations are passed to the independent inspector to consider at the public examination and following the examination when the inspector may consult on proposed modifications to the plan. At these stages we are not therefore in a position to explain how comments have been taken into account.

Consultation Methods

The consultation methods outlined below were hosted and managed by the Greater Manchester Combined Authority (GMCA) on behalf of the 10 districts.

Online Consultation Portal

The primary method for seeking views was an online survey hosted on the Objective consultation portal. The online survey was divided into sections which allowed respondents to choose to answer all of the questions or just the questions related to the policies, proposed sites or other sections that interested them.

If respondents did not wish to respond using the online surveys, details were provided of how to respond separately by email or post.

Consultation email address and telephone line

A dedicated email address and telephone line was set up for GMSF queries. This provided a referral service whereby all queries were logged and forwarded to the most relevant contact to respond within a set timeframe. Both the email address and telephone number were included on the consultation material and ensured queries were dealt with efficiently.

Publicity Methods

A wide range of methods were used to raise awareness about the consultation and to encourage people to respond. The publicity methods aimed to target the full range of stakeholders.

GMCA Email and Letters

As part of the 2016 draft GMSF consultation, Rochdale Council provided the Greater Manchester Combined Authority (GMCA) with details of contacts on the Councils Local Plan database. This allowed the GMCA to create a GMSF specific database to be used for future consultations on the GMSF with the intention of reducing the amount of duplicate emails sent to bodies and organisations. The GMCA contacted people and organisations registered on this database by their preferred method. This provided an overview of the 2016 draft GMSF and the consultation process and details of how to access further information.

Rochdale Council Email and Letters

A notification email or letter was sent out to contacts on the Councils Local Plan database on 31st October 2016. This contained information on the 2016 draft GMSF, the consultation, a link to the GMCA GMSF webpage, details of where hard copies of the 2016 draft GMSF were available for inspection, details of the Rochdale public event taking place and a link to the Rochdale Council webpage for further information.

A further notification email or letter was sent out to contacts on the Councils Local Plan database on 2nd December 2016 providing details of the public drop in events taking place across the Rochdale borough.

A further notification email or letter was sent out to contacts on the Councils Local Plan database on 20th December 2016 providing details of the extension to the consultation.

Councillors

A notification email was sent out to all Councillors on 2nd November 2016. This contained information on the 2016 draft GMSF, the consultation, a weblink to the relevant webpage on Rochdale Councils website for details of the 2016 draft GMSF and details of the public drop in events being held by Rochdale Council.

Hard copy documents

Hard copies of the 2016 draft GMSF were made available for inspection at Rochdale's 4 principal libraries of Rochdale Central, Middleton, Littleborough and Heywood alongside the Councils Customer Service Centre which is also the planning department's principal office at Number One Riverside. A hard copy of the Integrated Assessment was also available for inspection at Number One Riverside.

Website

Details of the consultation were included on the GMSF web page of the Councils website for the duration of the consultation period, with links directing people through to the Greater Manchester Combined Authority web page to access the 2016 draft GMSF documents. An overview of the GMSF was provided including a Rochdale relevant context, along with details of where hard copies of the document could be found for inspection and how people could make comments on the document.

Press Release

A press release was issued providing details of the 2016 draft GMSF, how to access information and respond to the consultation and it provided details of the public drop in events being held by Rochdale Council.

Social media

Throughout the 2016 draft GMSF consultation the Council made use of its social media channels to promote the consultation and encourage people to respond.

Public Drop in Events

In Rochdale a total of 9 public drop in events were held during the consultation period where members of the public were able to come along to speak to Council officers regarding the draft GMSF and specific proposals for Rochdale. Table 1 below contains details of the drop in events:

Table 1: Rochdale 2016 Draft GMSF Consultation drop in events

Location	Date	Time
Number One Riverside, Smith Street, Rochdale	14 th November 2016	1:30pm – 7:30pm
Number One Riverside, Smith Street, Rochdale	5 th December 2016	3:30pm – 6:30pm
Heywood Phoenix Centre, Church Street, Heywood	7 th December 2016	3:30pm – 6:30pm
Milnrow Cricket Club, Milnrow	8 th December 2016	3:30pm – 6:30pm
Middleton Library, Middleton	12 th December 2016	3:30pm – 6:30pm
Heywood Phoenix Centre, Church Street, Heywood	9 th January 2017	5:00pm – 6:00pm
Number One Riverside, Smith Street, Rochdale	10 th January 2017	5:00pm – 6:00pm
Number One Riverside, Smith Street, Rochdale	11 th January 2017	5:00pm – 6:00pm

Middleton Arena, Lower Auditorium, Middleton	12 th January 2017	5:00pm – 6:00pm
--	-------------------------------	-----------------

Details of the above events were advertised in a variety of ways, including:

- Rochdale Council Strategic Planning webpage
- The Council's social media channels.
- An email to contacts on the Local Plan consultation database.

Approximately 400 people attended the drop in events across the borough. The issues raised were a mix of allocation specific comments and other more general comments.

Rochdale Statement of Community Involvement Summary of Compliance Consultation Regulation 18 draft Greater Manchester Spatial Framework 2019

Rochdale's Statement of Community Involvement (SCI) relevant to the 2019 draft GMSF consultation was adopted in November 2015 and sets out how and when the community will be involved in the preparation of planning documents like the Greater Manchester Spatial Framework (GMSF). Since the end of that public consultation Rochdale has adopted an updated SCI in October 2019, however there are no significant changes relating to the how we will involve the public in the preparation of planning documents. This summary of how Rochdale's SCI requirements were met during the 2019 draft GMSF consultation relates to Rochdale's 2015 SCI as that was the adopted SCI at the time of the consultation.

The 2019 draft GMSF was produced as a joint Development Plan Document and therefore it is necessary to demonstrate how the consultation requirements of Rochdale's SCI have been met in relation to the preparation of this document. A copy of the Council's 2015 SCI can be requested by contacting Rochdale's Strategic Planning Team.

The aim of the Rochdale SCI is to ensure that the regulations dealing with the consultation are met, as a minimum. Paragraphs 4.32 to 4.40 of the 2015 Rochdale SCI refers to the preparation of the GMSF and outlines who, when and how people will be involved in the preparation of the GMSF. Paragraph 4.33 states *'Work on the GMSF will be coordinated and managed by the Association of Greater Manchester Authorities (AGMA) on behalf of the ten districts. This Statement of Community Involvement sets out how the community and other stakeholders will be involved in the preparation of the joint GMSF.'*

Paragraph 4.39 outlines how people will be involved in the consultation process and states:

- *AGMA will contact appropriate organisations and individuals directly, by email or by post;*
- *AGMA will publicise consultations by methods such as the AGMA website and each of the ten districts' web sites, press releases, social media, meetings and workshops;*
- *AGMA will make consultation documents available on the AGMA website, at the principal office of each of the Greater Manchester Local Planning Authorities and at selected public libraries; and*
- *AGMA will publish comments received, or a summary of them, as soon as possible and explain how they have been taken into account in preparing the plan.²*

A summary of the consultation methods used in the 2019 draft GMSF consultation is set out below.

² The exceptions to this general principle occur at the 'publication' stage of the plan when representations are passed to the independent inspector to consider at the public examination and following the examination when the inspector may consult on proposed modifications to the plan. At these stages we are not therefore in a position to explain how comments have been taken into account.

Consultation Methods

The consultation methods outlined below were hosted and managed by the Greater Manchester Combined Authority (GMCA) on behalf of the 10 districts.

Online Consultation Portal

The primary method for seeking views was an online survey hosted on the Citizen Space consultation portal. The online survey was divided into sections which allowed respondents to choose to answer all of the questions or just the questions related to the policies, proposed sites or other sections that interested them.

If respondents did not wish to respond using the online surveys, details were provided of how to respond separately by email or post.

Consultation email address and telephone line

A dedicated email address and telephone line was set up for 2019 draft GMSF queries. This provided a referral service whereby all queries were logged and forwarded to the most relevant contact to respond within a set timeframe. Both the email address and telephone number were included on the consultation material and ensured queries were dealt with efficiently.

Publicity Methods

A wide range of methods were used to raise awareness about the consultation and to encourage people to respond. The publicity methods aimed to target the full range of stakeholders.

GMCA Email and Letters

As part of the 2016 Draft GMSF consultation, Rochdale Council provided the Greater Manchester Combined Authority (GMCA) with details of contacts on the Councils Local Plan database. This allowed the GMCA to create a GMSF specific database to be used for future consultations on the GMSF. The GMCA contacted people and organisations registered on this database by their preferred method. This provided an overview of the 2019 draft GMSF and the consultation process and details of how to access further information.

Rochdale Council Email and Letters

Since Rochdale Council provided the GMCA with details of contacts on the Councils Local Plan consultation database in 2016, further members of the public and agencies requested to be added to the Rochdale Local Plan consultation database and kept up to date with all emerging planning documents affecting the Rochdale borough. Therefore a notification email or letter was sent out to these contacts on 21st January 2019. This contained information on the 2019 draft GMSF, the consultation and a link to the Rochdale Council webpage for further information.

Councillors

Prior to the start of the consultation period, a briefing session was held for Councillors on the 7th January 2019. The purpose of the briefing sessions was to provide Councillors with an overview of the 2019 draft GMSF, details of Rochdale's proposed allocations, details of the consultation and the public drop in sessions being held by Rochdale Council and provide an opportunity for councillors to ask questions. Following the briefing session a copy of the presentation slides and a briefing note on the 2019 draft GMSF was emailed to all councillors on the 8th January 2019.

Hard copy documents

Hard copies of the 2019 draft GMSF along with the Integrated Assessment and GM Transport Strategy 2040 were made available for inspection at Rochdale's 4 principal libraries of Rochdale Central, Middleton, Littleborough and Heywood alongside the Councils Customer Service Centre which is also the planning department's principal office at Number One Riverside.

Website

Details of the consultation were included on the GMSF web page of the Councils website for the duration of the consultation period, with links directing people through to the Greater Manchester Combined Authority web page to access the 2019 draft GMSF documents. An overview of the GMSF was provided including a Rochdale relevant context, along with details of where hard copies of the document could be found for inspection and how people could make comments on the document.

A banner advertising the GMSF consultation appeared on the Rochdale Council homepage.

Press Release

A press release was issued providing details of the GMSF, how to access information and respond to the consultation and it provided details of the public drop in events being held by Rochdale Council.

Social media

Throughout the 2019 draft GMSF consultation the Council made use of its range of social media channels including Twitter and Facebook to promote the consultation and encourage people to respond.

Public Drop in Events

In Rochdale a total of 5 public drop in events were held during the consultation period where members of the public were able to come along to speak to Council officers regarding the 2019 draft GMSF and specific proposals for Rochdale.

Rochdale officers also attended 2 public drop in sessions being held by Oldham Council in locations relevant to the 2 cross boundary site allocations which Rochdale shares with Oldham.

Approximately 400 people attended the events in total. Table 1 below contains details of the drop in events:

Table 1: Rochdale Draft GMSF Consultation drop in events

Location	Date	Time
Rochdale Town Hall, Reception room, Rochdale	4th February 2019	16:00-19:00
Phoenix Centre, Church Street, Heywood	5th February 2019	16:00-19:00
Hare Hill House, Hare Hill Road, Littleborough	7th February 2019	16:00-19:00
Middleton Arena, Lower Auditorium, Middleton	11th February 2019	15:30-18:30
Milnrow Cricket Club, Milnrow	14th February 2019	16:00-19:00
Oldham Drop in Events attended by Rochdale officers		
Shaw Lifelong Learning Centre	31st January 2019	16:00-20:00
St Matthew's Primary School, Chadderton	13th February 2019	16:00-20:00

Details of the above events were advertised in a variety of ways, including:

- Rochdale Council Strategic Planning webpage
- The Council's social media channels
- Press Releases

Rochdale Statement of Community Involvement Summary of Compliance Regulation 19 consultation on the Places for Everyone Joint Development Plan Publication Draft 2021

Rochdale's Statement of Community Involvement (SCI) relevant to the Places for Everyone Joint Development Plan Publication Draft 2021 (PfE2021) consultation was adopted in August 2021 and sets out how and when the community will be involved in the preparation of planning documents like PfE2021.

PfE2021 was produced as a joint Development Plan Document and therefore it is necessary to demonstrate how the consultation requirements of Rochdale's SCI have been met in relation to the Regulation 19 PfE 2021 consultation. A copy of the Rochdale SCI can be found online at [Statement of Community Involvement \(rochdale.gov.uk\)](https://www.rochdale.gov.uk/statement-of-community-involvement) or requested by contacting Rochdale's Strategic Planning Team.

The aim of the Rochdale SCI is to ensure that the regulations dealing with the consultation are met, as a minimum. Paragraph 4.35 of the Rochdale SCI refers to the preparation of PfE and states '*Consultation on PfE is carried out on a joint basis and is in line with the Town and Country Planning (Local Planning) (England) Regulations 2012 and the nine districts' Statements of Community Involvement.*'

Paragraph 4.27 of the Rochdale SCI states '*The Town and Country Planning (Local Planning) (England) Regulations 2012, the Planning Compulsory Purchase Act 2004 and the Localism Act 2011, set out the points in the preparation process that we must undertake consultation, or make documents available for comment. We will always meet these requirements, but in addition we can undertake additional engagement at appropriate points through the process*'. The below table, extracted from Figure 5 '*Public consultation procedures and methods for Development Plan Documents*' of the Rochdale SCI, sets out both the statutory requirements and some of the additional ways in which we may seek to involve people in respect of Development Plan Documents. It is not an exhaustive list and not every method will be used for each document being produced. We will use the methods that we consider are most effective in terms of resources and outcomes.

Paragraph 4.28 of the Rochdale SCI states that due to the measures introduced by the Government in response to the COVID-19 outbreak, it will not be possible to use all the consultation methods listed in Figures 5 [where they are inconsistent with guidance including requirements for social distancing and to stay at home and away from others]. These methods have been highlighted yellow and in italics in Figure 5. The Council will use the most appropriate methods allowed at the time of the consultation.

Activity	Consultation and notice	When will you be involved?	How will you be involved?
Publication stage (Regulation 19)	<ul style="list-style-type: none"> <i>Before submitting the Local Plan we will make a version of the proposed submission documents and a statement of the representations available for inspection at Number One Riverside,</i> 	We will notify people who would like to be notified of any formal public consultation period (either on the production of the draft Development	People can get involved through written and online consultation. We will publish documents on our website <i>and put them in Number One</i>

	<p><i>other Council Information Points in Heywood, Middleton and Littleborough, and in the relevant libraries;</i></p> <ul style="list-style-type: none"> • Publish details on the website; • We will notify everyone, who has been asked to be contacted, that the submission documents are available for inspection and inviting them to make representations; and • We will send notification to general consultation bodies and specific consultation bodies, inviting them to make representation. 	Plan Document or on the publication of the draft Development Plan Document).	<i>Riverside, relevant local libraries, and in each of the Township information points.</i>
--	--	--	---

A summary of the consultation and publicity methods used in Rochdale for the PfE2021 consultation is set out below.

Consultation Methods

The consultation methods outlined below were hosted and managed by the Greater Manchester Combined Authority (GMCA) on behalf of the 9 districts.

Online Consultation Portal

The primary method for seeking views was an online survey hosted on the Citizen Space consultation portal, designed to be used on smart phones, tablets and computers. The online survey was divided into sections which allowed respondents to choose to answer all of the questions or just the questions related to the policies, proposed sites, proposed Green Belt additions or other sections that interested them.

If respondents did not wish to respond using the online surveys, details were provided of how to respond separately by email or post.

Virtual Exhibition Space

A virtual exhibition space was set up for the duration of the PfE2021 consultation. It provided links to PfE2021, the consultation material and the online consultation portal.

The space included the following information:

- videos relating to the consultation;
- key information on PfE2021, the approach and the purpose of the consultation;
- a map for each district showing key information including the proposed PfE site allocations and the proposed Green Belt boundary;
- a link to the full PfE2021 plan;
- a link to frequently asked questions;
- a link to supporting/background documents; and
- a link to the archived Great Manchester Spatial Framework documents.

The space was designed to allow easy online access to the PfE2021 consultation documents by collating all the information in one place.

Consultation email address and telephone line

A dedicated email address and telephone line was set up for PfE2021 queries. This provided a referral service whereby all queries were logged and forwarded to the most relevant contact to respond within a set timeframe. Both the email address and telephone number were included on the consultation material and ensured queries were dealt with efficiently.

Publicity Methods

A wide range of methods were used to raise awareness about the consultation and to encourage people to respond. The publicity methods aimed to target the full range of stakeholders.

Councillors

A notification email was sent out to all Councillors on 9th August 2021. This contained information on PfE2021, the consultation and a weblink to the relevant webpage on Rochdale Councils website for details of PfE2021.

The Statement of Representation Procedures, which explains the procedure for making representations and details of where the documents are available for inspection, was attached to the email.

GMCA Specific Consultation Bodies Emails

Rochdale Council provided the GMCA with details of all the specific consultation bodies' contacts on the Council's Local Plan consultation database. The GMCA contacted these stakeholders by their preferred method with information on PfE2021 and the consultation. This exercise was primarily to avoid specific consultation bodies being sent multiple emails in respect of the consultation. The Statement of Representation Procedures, which explains the procedure for making representations and details of where the documents are available for inspection, was attached to the email or included with letters.

GMCA Email and Letters

As part of the 2016 Draft GMSF consultation, Rochdale Council provided the GMCA with details of contacts on the Councils Local Plan consultation database. This allowed the GMCA to create a GMSF specific database to be used for future consultations on the GMSF. This database was used for the PfE2021 consultation. The GMCA contacted people and organisations registered on this database by their preferred method with information on PfE2021 and the consultation. The Statement of Representation Procedures, which explains the procedure for making representations and details of where the documents are available for inspection, was attached to the email or included with letters.

Rochdale Council Email and Letters

Since Rochdale Council provided the GMCA with details of contacts on the Councils Local Plan consultation database in 2016, further members of the public and agencies requested to be added to the Local Plan consultation database and kept up to date with all emerging planning documents affecting the Rochdale borough. Therefore a notification email or letter

was sent out to these contacts on 9th August 2021. This contained information on PfE2021 and the consultation. The Statement of Representation Procedures, which explains the procedure for making representations and details of where the documents are available for inspection, was attached to the email or letter.

Hard copy documents

Hard copies of the PfE2021 document along with A0 maps showing the proposed site allocations were made available for inspection at all open libraries within Rochdale borough alongside the Councils Customer Service Centre which is also the planning department's principal office at Number One Riverside.

Website

Details of the PfE2021 consultation were included on the Places for Everyone (PfE) web page of the Councils website for the duration of the consultation period, with links directing people through to the GMCA web page to access the virtual exhibition room and the PFE2021 consultation documents. An overview of PfE was provided including a Rochdale relevant context, along with details of where hard copies of the document could be found for inspection and how people could make comments on the document.

A banner advertising the PfE2021 consultation appeared on the Rochdale Council homepage.

Site Notices

Site notices were placed around all proposed site allocations and Green Belt additions in Rochdale borough. The site notices provided details of and a plan showing the boundary of the relevant proposed site allocation or Green Belt addition, details of the PfE2021 consultation and where to find further information. The site notices also provided a QR code which could be scanned to access further information.

Social media

Throughout the PfE2021 consultation Rochdale Council made use of its range of social media channels including Twitter, Facebook and Instagram to promote the consultation and encourage people to respond.

Appendix 1 2016 Rochdale Consultation Methods

1. Email/Letter to consultation database

Dear Sir / Madam

Draft Greater Manchester Spatial Framework – Consultation

I am writing to inform you that the public consultation on the draft Greater Manchester Spatial Framework runs from **31 October to 23 December 2016**. During this time, we would welcome any comments you may have on this document, together with the Integrated Assessment Report and other background papers.

Over the next twenty years there is a need to deliver continued sustainable economic growth, creating more jobs and new homes for the people of Greater Manchester.

The ten local authorities in Greater Manchester are working together to deliver this growth and to ensure that these new homes and jobs are provided in the right places with the transport (roads, rail, Metrolink) and other infrastructure to support the communities and manage growth sustainably.

The draft Greater Manchester Spatial Framework sets out:

- How much housing and employment land is needed up to 2035.
- A number of strategic sites across Greater Manchester to assist in meeting these requirements.
- The importance of infrastructure such as, health, education, transport, green spaces and utilities to support neighbourhoods and employment.
- Ways to protect and improve the natural environment.

For further information on the consultation please visit www.greatermanchester-ca.gov.uk/GMSF

Paper copies of the draft Greater Manchester Spatial Framework may be viewed at:

- Rochdale Council Office, Number One Riverside, Smith Street, Rochdale, OL16 1XU
- Rochdale Library, Number One Riverside, Smith Street, Rochdale, OL16 1XU
- Middleton Library, Long Street, Middleton, M24 6DU
- Heywood Library, Lance Corporal Stephen Shaw M C Way, Heywood, OL10 1LL
- Littleborough Library, Hare Hill Park, Littleborough, OL15 9HE

A paper copy of the Integrated Assessment may be viewed at:

- Rochdale Council Offices, Number One Riverside, Smith Street, Rochdale, OL16 1XU

The documents may also be viewed electronically via the internet facilities at other libraries within the borough. Please check the Council website: www.rochdale.gov.uk, for details of opening times.

Responses to the consultation may be made:

- Online at <http://gmsf-consult.objective.co.uk> or
- By email to GMSF@agma.gov.uk

- By Post to : Greater Manchester Integrated Support Team
PO Box 532
Town Hall
Manchester
M60 2LA

All comments must be received **by 17:00 on 23 December 2016**.

Please note all comments will be held by the Greater Manchester Combined Authority and will be available to view publicly. Comments cannot be treated as confidential. Your personal information, such as your postal and e-mail address will not be published, but your name and organisation (if relevant) will.

The Greater Manchester Combined Authority maintains a database of consultees who wish to be kept informed about the Greater Manchester Spatial Framework. In responding to this consultation your contact details will automatically be added to the consultation database. If you do not want to be contacted about future Greater Manchester Spatial Framework consultations please state this in your response.

A series of events are being hosted across Greater Manchester which the public are invited to attend and discuss the draft Greater Manchester Spatial Framework. For Rochdale this will be on the **14 November 2016 1:30pm – 7:30pm on the Ground Floor, Number One Riverside, Smith Street, Rochdale OL16 1XU**.

If you require any further information on the consultation please do not hesitate to contact the Greater Manchester Planning Team on: 0161 237 4636.

If you would like to discuss one of the individual allocations in detail please contact the Strategic Planning Team on: 01706 924252.

Yours faithfully



Rochdale Borough Council
Floor 3, Number One Riverside
Smith Street, Rochdale, OL16 1XU

To access our services go to www.rochdale.gov.uk
For news and social media updates go to www.rochdale.gov.uk/news

2. Email/Letter to consultation database for drop in sessions

Dear Sir / Madam

Draft Greater Manchester Spatial Framework – Consultation

Further to the email we sent to you below, I am writing to you to inform you that some additional consultation 'drop in' events have been organised. The dates, times and venues for these are as follows:

- Monday 5 December 2016, 3.30pm - 6.30pm, Number One Riverside, Rochdale
- Wednesday 7 December 2016, 3.30pm - 6.30pm, Phoenix Centre, Heywood
- Thursday 8 December 2016, 3.30pm - 6.30pm, Milnrow Cricket Club, Pennines
- Monday 12 December 2016, 3.30pm - 6.30pm, Middleton Library, Middleton

If you have any queries in relation to these events or the consultation in general please contact the Strategic Planning Team on: 01706 924252.

Yours faithfully



Rochdale Borough Council

Floor 3, Number One Riverside

Smith Street, Rochdale, OL16 1XU

To access our services go to www.rochdale.gov.uk

For news and social media updates go to www.rochdale.gov.uk/news

3. Email/Letter text to consultation database for consultation extension

Dear Sir / Madam

Public consultation on the first draft of Greater Manchester Spatial Framework is being extended until January 16 2017

We have contacted you previously about the current public consultation on the draft Greater Manchester Spatial Framework which commenced on 31 October 2016. This is an important plan and it has already generated a huge amount of public interest. In order to make sure that everyone who wants to has the opportunity to take part in the consultation it has been decided to extend the consultation until **Monday January 16 (23.59)**

For further information on the consultation please visit www.greatermanchester-ca.gov.uk/GMSF

Paper copies of the draft Greater Manchester Spatial Framework may still be viewed at:

- Rochdale Council Office, Number One Riverside, Smith Street, Rochdale, OL16 1XU
- Rochdale Library, Number One Riverside, Smith Street, Rochdale, OL16 1XU
- Middleton Library, Long Street, Middleton, M24 6DU
- Heywood Library, Lance Corporal Stephen Shaw M C Way, Heywood, OL10 1LL
- Littleborough Library, Hare Hill Park, Littleborough, OL15 9HE

A paper copy of the Integrated Assessment may be viewed at:

- Rochdale Council Offices, Number One Riverside, Smith Street, Rochdale, OL16 1XU

The documents may also be viewed electronically via the internet facilities at other libraries within the borough. Please check the Council website: www.rochdale.gov.uk, for details of opening times.

Responses to the consultation may be made:

- Online at <http://gmsf-consult.objective.co.uk> or
- By email to GMSF@agma.gov.uk
- By Post to : Greater Manchester Integrated Support Team

PO Box 532

Town Hall

Manchester

M60 2LA

All comments must be received **by 23:59 on 16th January 2017.**

Please note all comments will be held by the Greater Manchester Combined Authority and will be available to view publicly. Comments cannot be treated as confidential. Your personal information, such as your postal and e-mail address will not be published, but your name and organisation (if relevant) will.

If you require any further information on the consultation please do not hesitate to contact the Greater Manchester Planning Team on: 0161 237 4636.

If you would like to discuss one of the individual allocations in detail please contact the Strategic Planning Team on: 01706 924252.

Yours faithfully



Rochdale Borough Council

Floor 3, Number One Riverside

Smith Street, Rochdale, OL16 1XU

To access our services go to www.rochdale.gov.uk

For news and social media updates go to www.rochdale.gov.uk/news

4. Email to Councillors

Dear Councillor

I know many of you are aware of the consultation that has just commenced on the Draft Greater Manchester Spatial Framework. For your information please see below the email that has been sent out to those people on our consultation database. The email explains how the documents can be viewed and how people can comment.

If you have any queries please let me know.

Regards



Rochdale Borough Council

Floor 3, Number One Riverside

Smith Street, Rochdale, OL16 1XU

To access our services go to www.rochdale.gov.uk

For news and social media updates go to www.rochdale.gov.uk/news

From:

Sent: 31 October 2016 13:01

To:

Subject: Draft Greater Manchester Spatial Framework - Consultation

Dear Sir / Madam

Draft Greater Manchester Spatial Framework – Consultation

I am writing to inform you that the public consultation on the draft Greater Manchester Spatial Framework runs from **31 October to 23 December 2016**. During this time, we would welcome any comments you may have on this document, together with the Integrated Assessment Report and other background papers.

Over the next twenty years there is a need to deliver continued sustainable economic growth, creating more jobs and new homes for the people of Greater Manchester.

The ten local authorities in Greater Manchester are working together to deliver this growth and to ensure that these new homes and jobs are provided in the right places with the transport (roads, rail, Metrolink) and other infrastructure to support the communities and manage growth sustainably.

The draft Greater Manchester Spatial Framework sets out:

- How much housing and employment land is needed up to 2035.
- A number of strategic sites across Greater Manchester to assist in meeting these requirements.
- The importance of infrastructure such as, health, education, transport, green spaces and utilities to support neighbourhoods and employment.
- Ways to protect and improve the natural environment.

For further information on the consultation please visit www.greatermanchester-ca.gov.uk/GMSF

Paper copies of the draft Greater Manchester Spatial Framework may be viewed at:

- Rochdale Council Office, Number One Riverside, Smith Street, Rochdale, OL16 1XU
- Rochdale Library, Number One Riverside, Smith Street, Rochdale, OL16 1XU
- Middleton Library, Long Street, Middleton, M24 6DU
- Heywood Library, Lance Corporal Stephen Shaw M C Way, Heywood, OL10 1LL
- Littleborough Library, Hare Hill Park, Littleborough, OL15 9HE

A paper copy of the Integrated Assessment may be viewed at:

- Rochdale Council Offices, Number One Riverside, Smith Street, Rochdale, OL16 1XU

The documents may also be viewed electronically via the internet facilities at other libraries within the borough. Please check the Council website: www.rochdale.gov.uk, for details of opening times.

Responses to the consultation may be made:

- Online at <http://gmsf-consult.objective.co.uk> or
- By email to GMSF@agma.gov.uk
- By Post to : Greater Manchester Integrated Support Team
PO Box 532
Town Hall
Manchester
M60 2LA

All comments must be received **by 17:00 on 23 December 2016.**

Please note all comments will be held by the Greater Manchester Combined Authority and will be available to view publicly. Comments cannot be treated as confidential. Your personal information, such as your postal and e-mail address will not be published, but your name and organisation (if relevant) will.

The Greater Manchester Combined Authority maintains a database of consultees who wish to be kept informed about the Greater Manchester Spatial Framework. In responding to this consultation your contact details will automatically be added to the consultation database. If you do not want to be contacted about future Greater Manchester Spatial Framework consultations please state this in your response.

A series of events are being hosted across Greater Manchester which the public are invited to attend and discuss the draft Greater Manchester Spatial Framework. For Rochdale this will be on the **14 November 2016 1:30pm – 7:30pm on the Ground Floor, Number One Riverside, Smith Street, Rochdale OL16 1XU.**

If you require any further information on the consultation please do not hesitate to contact the Greater Manchester Planning Team on: 0161 237 4636.

If you would like to discuss one of the individual allocations in detail please contact the Strategic Planning Team on: 01706 924252.

Yours faithfully



Rochdale Borough Council

Floor 3, Number One Riverside

Smith Street, Rochdale, OL16 1XU

To access our services go to www.rochdale.gov.uk

For news and social media updates go to www.rochdale.gov.uk/news

5. List of Specific Consultation Bodies

Specific consultation bodies
The Coal Authority
The Environment Agency
The Historic Buildings and Monuments Commission for England (Historic England)
Natural England
The Office of Rail Regulation
Highways England
Transport for Greater Manchester
Adjacent local authorities* <ul style="list-style-type: none">- Manchester City Council- Calderdale Council- Oldham Council- Bury Council- Rossendale Council- Tameside Council- Wigan Council- Salford City Council- Trafford Council- Stockport City Council- Bolton Council- Lancashire County Council- Greater Manchester Combined Authority (GMCA)
NHS Heywood, Middleton and Rochdale Clinical Commissioning Group (HMR CCG)
Relevant telecommunications companies
Relevant electricity and gas companies
Relevant water and sewerage undertakers
Homes England
Local Nature Partnerships

6. Website Text

Greater Manchester Spatial Framework

Over the next twenty years there is a need to deliver continued sustainable economic growth, creating more jobs and new homes for the people of Greater Manchester.

The ten local authorities in Greater Manchester are working together on a joint plan called the Greater Manchester Spatial Framework (GMSF) this is being prepared to ensure that new homes and jobs are provided in the right places with the transport (roads, rail, Metrolink) and infrastructure to support the communities and manage growth sustainably.

The draft Greater Manchester Spatial Framework sets out:

- How much housing and employment land is needed up to 2035.
- A number of strategic sites across Greater Manchester to assist in meeting these requirements.
- The importance of infrastructure such as, health, education, transport, green spaces and utilities to support neighbourhoods and employment.
- Ways to protect and improve the natural environment.

Public consultation on the draft version of the Greater Manchester Spatial Framework runs from **31 October to 23 December 2016**. During this time, we would welcome any comments you may have on this document and supporting background papers. Views submitted will be considered and a final draft will be published in 2017 when another period of consultation will be held.

For further information on the consultation, to view and download the following documents please visit www.greatermanchester-ca.gov.uk/GMSF.

Paper copies of the draft Greater Manchester Spatial Framework may be viewed at:

- Rochdale Council Office, Number One Riverside, Smith Street, Rochdale, OL16 1XU
- Rochdale Library, Number One Riverside, Smith Street, Rochdale, OL16 1XU
- Middleton Library, Long Street, Middleton, M24 6DU
- Heywood Library, Lance Corporal Stephen Shaw M C Way, Heywood, OL10 1LL
- Littleborough Library, Hare Hill Park, Littleborough, OL15 9HE

A paper copy of the Integrated Assessment may be viewed at:

- Rochdale Council Offices, Number One Riverside, Smith Street, Rochdale, OL16 1XU

Please check the Council website: www.rochdale.gov.uk, for details of opening times.

Comments may only be made:

- Online at <http://gmsf-consult.objective.co.uk>
- By email to GMSF@agma.gov.uk
- By Post to : Greater Manchester Integrated Support Team
PO Box 532
Town Hall
Manchester
M60 2LA

All comments must be received **by 17:00 on 23rd December 2016**.

Please note all comments will be held by the Greater Manchester Combined Authority and will be available to view publicly. Comments cannot be treated as confidential. Your personal information, such as your postal and e-mail address will not be published, but your name and organisation (if relevant) will.

The Greater Manchester Combined Authority maintains a database of consultees who wish to be kept informed about the Greater Manchester Spatial Framework. In responding to this consultation your contact details will automatically be added to the consultation database. If you do not want to be contacted about future Greater Manchester Spatial Framework consultations please state this in your response.

A series of events are being hosted across Greater Manchester which the public are invited to attend and discuss the draft Greater Manchester Spatial Framework. For Rochdale this will be on the **14th November 2016 1:30pm – 7:30pm on the Ground Floor, Number One Riverside, Smith Street, Rochdale OL16 1XU**.

7. Social Media Posts

Twitter Posts:



Rochdale Borough Cou...  · 28 Dec 16

Newly announced **GMSF** drop-in events for residents and workers of **Rochdale**. Come along and find out more.



 1  6  2 



Rochdale Borough Council  · 01 Jan 17

GMSF @GMSpatialFrame drop-in events for **Rochdale** residents. Come along and find out more.



 2  3  1 

Appendix 2 2019 Rochdale Consultation Methods

1. Email/Letter for consultation database

Dear Sir/Madam,

GREATER MANCHESTER SPATIAL FRAMEWORK – CONSULTATION UNTIL 18 MARCH 2019

I am emailing you as you are on Rochdale's Local Plan database to inform you about consultation that is now underway on the Greater Manchester Spatial Framework (GMSF). You may have already received an email about this consultation from the Greater Manchester Combined Authority (GMCA).

Rochdale Borough Council is working in partnership with the nine other Greater Manchester councils to develop the GMSF, a new strategic plan for the city region which will run through to 2037. This plan is about providing the right homes, in the right places, for people across our city region. It's about creating jobs and improving infrastructure and the environment to ensure the future prosperity of Greater Manchester. For more information regarding the GMSF, how to view and comment on the plan and what it means for Rochdale Borough please visit <http://www.rochdale.gov.uk/spatialframework>

Kind regards

Planning



Rochdale Borough Council

Floor 3, Number One Riverside

Smith Street, Rochdale, OL16 1XU

To access our services go to www.rochdale.gov.uk

For news and social media updates go to www.rochdale.gov.uk/news

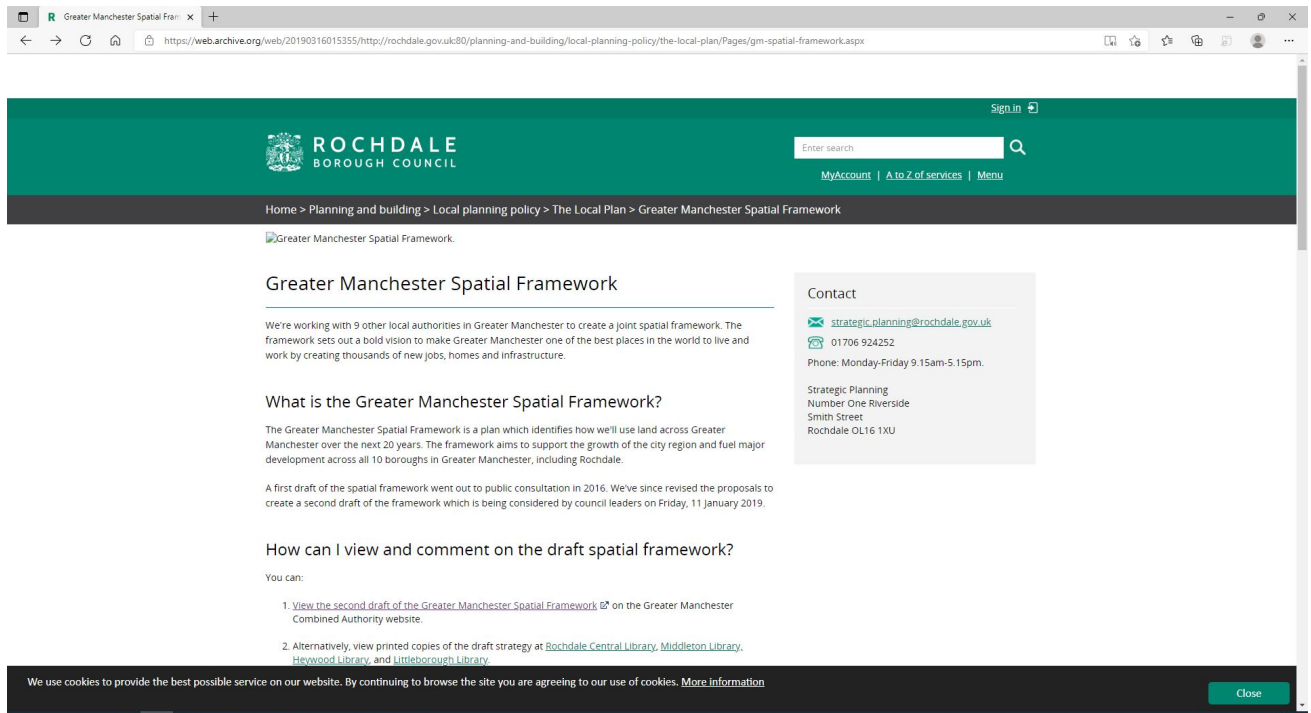
Please consider the environment before printing this email.

2. List of Specific Consultation Bodies

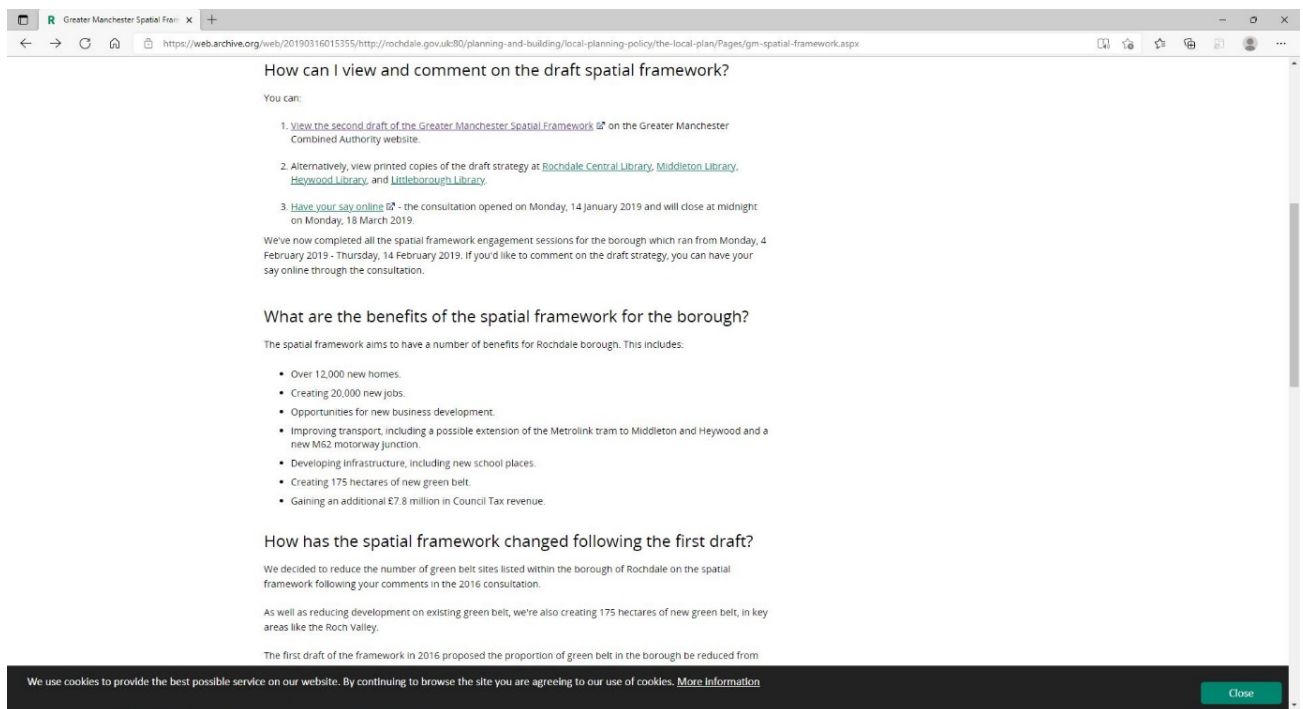
Specific consultation bodies
The Coal Authority
The Environment Agency
The Historic Buildings and Monuments Commission for England (Historic England)
Natural England
The Office of Rail Regulation
Highways England
Transport for Greater Manchester
Adjacent local authorities* <ul style="list-style-type: none">- Manchester City Council- Calderdale Council- Oldham Council- Bury Council- Rossendale Council- Tameside Council- Wigan Council- Salford City Council- Trafford Council- Stockport City Council- Bolton Council- Lancashire County Council- Greater Manchester Combined Authority (GMCA)
NHS Heywood, Middleton and Rochdale Clinical Commissioning Group (HMR CCG)
Relevant telecommunications companies
Relevant electricity and gas companies
Relevant water and sewerage undertakers
Homes England
Local Nature Partnerships

4. Screenshots of Rochdale Council Webpage

Screenshot 1 of 4



Screenshot 2 of 4



Screenshot 3 of 4

Greater Manchester Spatial Framework

https://web.archive.org/web/20190316015355/http://rochdale.gov.uk/80/planning-and-building/local-planning-policy/the-local-plan/Pages/gm-spatial-framework.aspx

The first draft of the framework in 2016 proposed the proportion of green belt in the borough be reduced from 62.8% to 58.2%. The second draft of the framework proposes the green belt only be reduced by 2.9% to 59.9%.

This has been achieved partly through scaling back plans for new developments at the following sites:

- Bamford and Norden
- Land south of Newhey
- The area around Tandle Hill Country Park

As a result, if all the sites in this draft plan are developed, **Rochdale borough will still have more green belt than any other borough in Greater Manchester.**

What sites in the borough are proposed for development in the spatial framework?

We published the first draft of the spatial framework in 2016 which listed a number of proposed development sites in the borough. Following the consultation, we've made some changes to the proposed sites.

You can view the main proposed development sites in the borough and a summary of our proposed use for the site below. View the entire Greater Manchester Spatial Framework for more detailed summaries and maps of the areas.

- **The Northern Gateway:** land between junctions 18 and 19 of the M62 motorway, close to Heywood Distribution Park. The strategy proposes using this area for the creation of 1,600 new homes over 600,000 sq m of new employment space. We also propose a new rail connection be developed from Heywood through Castleton.
- **Stakehill Business Park:** 900 new homes around 100,000 sq m of employment space with proposals for additional place provision at Thornham St John Primary School. The proposal has been amended to reduce the scale of the allocation and to retain and protect green belt around Thornham Lane and Tandle Hill that was previously proposed for development.
- **Kingsway South:** 182 homes, 130,980 sq m of employment space and a new roundabout to access land south of junction 21.
- **Bamford and Norden:** proposals for this area are now for 450 high quality homes, reduced from 750 proposed in the first draft of the plan. Sports facilities in the area will be retained and improved with contributions from the development.
- **Crimble Mill:** we propose up to 250 high quality homes to enable the restoration of the listed Crimble Mill. The proposal also includes enhanced recreational open space, public transport and new school places. Provision is also made for new green belt around Queen's Park.
- **Castleton Sidings:** 125 new homes and improvements to open space. The scheme will also make provision

We use cookies to provide the best possible service on our website. By continuing to browse the site you are agreeing to our use of cookies. [More Information](#)

Close

Screenshot 4 of 4

Greater Manchester Spatial Framework

https://web.archive.org/web/20190316015355/http://rochdale.gov.uk/80/planning-and-building/local-planning-policy/the-local-plan/Pages/gm-spatial-framework.aspx


proposed for the restoration of the listed Crimble Mill. The proposal also includes enhanced recreational open space, public transport and new school places. Provision is also made for new green belt around Queen's Park.

- **Crimble Mill:** we propose up to 250 high quality homes to enable the restoration of the listed Crimble Mill. The proposal also includes enhanced recreational open space, public transport and new school places. Provision is also made for new green belt around Queen's Park.
- **Castleton Sidings:** 125 new homes and improvements to open space. The scheme will also make provision for highway improvements and a new cycleway, as well as the extension of the East Lancs railway into Castleton.
- **Newhey Quarry:** Up to 250 new homes which will make provision for additional parking facilities for local residents and Newhey Metrolink stop.
- **Land North East of Smithy Bridge:** Around 300 new homes and a new primary school. Improvements also proposed at Littleborough train station, recreational facilities around Hollingworth Lake, including enhanced visitor parking.
- **Trows Farm, Castleton:** around 360 new homes on land south of Crown Business Park with provision for a new primary school and improvements to public transport.
- **Land in the Roch Valley:** up to 210 new homes with improvements to public transport and funding to support new local school places.

Related pages

- [The Local Plan](#)

[Return to top](#)



ROCHDALE
BIRTHPLACE OF CO-OPERATION

ACHIEVEMENT AWARDS 2018
WINNER

Website approved
Plain English Campaign

Supporting our
Armed Forces Families

Better Connected:
2018 ★★★★★

Number One
Riverside
Building of the year 2013

Help

- [Contact us](#)
- [About us](#)
- [Maps](#)
- [Policies and strategies](#)
- [Privacy and cookies](#)
- [Terms and conditions](#)
- [Accessibility](#)
- [Site map](#)

Our partnerships

- [Visit Rochdale](#)
- [Link4Life](#)
- [Health](#)
- [Rochdale Boroughwide Housing](#)
- [Rochdale Development Agency](#)
- [Safeguarding Children Board](#)
- [Safeguarding Adults Board](#)
- [Safer Communities Partnership](#)

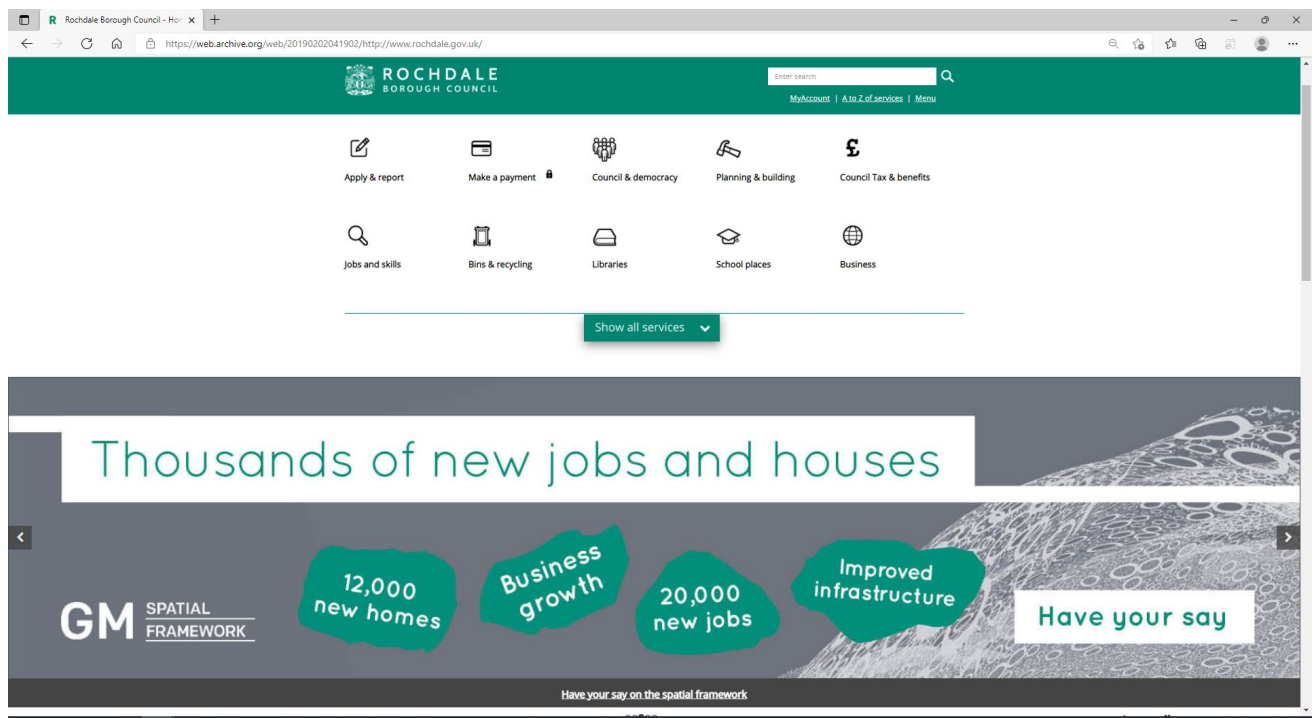
Stay connected

[Facebook](#) [Twitter](#) [Instagram](#)

[YouTube](#) [RSS](#) [Email](#)

© Rochdale Borough Council 2019

5. Screenshots of Consultation Banner on Rochdale Council homepage



6. Social Media Posts

Facebook Posts:

Rochdale Borough Council
Like This Page · 14 January 2019 · G

Thousands of new jobs and houses

12,000 new homes

20,000 new jobs

Business growth

Improved infrastructure

GM SPATIAL FRAMEWORK

Have your say

The public consultation on plans which will create thousands of new jobs and homes in Rochdale has just opened. Find out more and feed in your views here: bit.ly/zspravF

2 shares 5 comments

Rochdale Borough Council
Like This Page · 5 February 2019 · G

Engagement sessions

Heywood
Tuesday 5 February
4pm-7pm
Phoenix Centre

Littleborough
Thursday 7 February
4pm-7pm
Hare Hill House

Middleton
Monday 11 February
4pm-7pm
Middleton Arena - in the Lower Auditorium

Milnrow
Thursday 14 February
4pm-7pm
Milnrow Cricket Club

GM SPATIAL FRAMEWORK

The second public consultation event on our plan to create thousands of new jobs and homes across the borough, the Greater Manchester Spatial Framework, is taking place tonight. You can find details of all our public consultation events below: 📍📍📍

0 shares 0 comments

Engagement sessions

Heywood
 Tuesday 5 February
 4pm-7pm
Phoenix Centre

Littleborough
 Thursday 7 February
 4pm-7pm
Hare Hill House

Middleton
 Monday 11 February
 4pm-7pm
Middleton Arena - in the Lower Auditorium

Milnrow
 Thursday 14 February
 4pm-7pm
Milnrow Cricket Club

GM SPATIAL FRAMEWORK

Rochdale Borough Council
Like This Page · 11 February 2019

Our planners will be meeting residents in Middleton tonight to talk through our plans for thousands of new jobs and homes (the Greater Manchester Spatial Framework). Everyone is welcome to pop in and find out more about our proposals.

2 shares · 10 comments

Twitter Posts:



Rochdale Borough Council ✓
@RochdaleCouncil

Today we've launched a plan for 1,000s of new jobs and homes to help make Greater Manchester 1 of the best places in the world to live and work. Take a look and find out more: bit.ly/2Txcwak



17:09 · 07 Jan 19 · [Twitter Web Client](#)

6 Retweets · 3 Quote Tweets · 9 Likes



Rochdale Borough Council ✓
@RochdaleCouncil

Our planners will be [@Middleton_Arena](#) tonight to talk through our plans for thousands of new jobs and homes (The Greater Manchester Spatial Framework). Everyone is welcome. [@GMSpatialFrame](#)



15:47 · 11 Feb 19 · [Twitter Web Client](#)

1 Retweet · 1 Quote Tweet · 1 Like

Appendix 3 2021 Rochdale Consultation Methods

1. Email/Letter text for consultation database

Dear consultee,

Places for Everyone Joint Development Plan Document – Bolton, Bury, Manchester, Oldham, Rochdale, Salford, Tameside, Trafford, Wigan

We are writing to you because you previously responded to a consultation on the joint development plan being prepared in Greater Manchester or have asked to be kept informed on the progress of planning documents affecting Rochdale Borough.

The previous iteration of the plan was called 'Greater Manchester Spatial Framework'. In December 2020 Stockport Council withdrew from the process and the plan will continue as a joint development plan of the nine other Districts in Greater Manchester, now known as 'Places for Everyone'.

Please find enclosed the Statement of Representations which explains the procedure for making representations at the next stage of the plan, including where the documents are available for inspection

It may be that you have received communication regarding the PfE2021 from multiple sources, this is likely to be because you have registered an interest in more than one place. If you no longer wish to be contacted about the Places for Everyone Plan, please email ldf.consultation@rochdale.gov.uk

Yours faithfully

Planning and Development Service



Rochdale Borough Council

Floor 3, Number One Riverside

Smith Street, Rochdale, OL16 1XU

To access our services go to www.rochdale.gov.uk

For news and social media updates go to www.rochdale.gov.uk/news

Please consider the environment before printing this email.

2. Email text for Councillors

Dear Councillor

I am just contacting you to inform you that consultation has commenced on the Places for Everyone Joint Development Plan Document. The consultation on this plan runs from 9 August 2021 to 3 October 2021.

As you are probably aware, the previous iteration of the plan was called 'Greater Manchester Spatial Framework'. In December 2020 Stockport Council withdrew from the process and the plan will continue as a joint development plan of the nine other Districts in Greater Manchester, now known as 'Places for Everyone'.

Please find attached the Statement of Representation Procedures which explains the procedure for making representations at the next stage of the plan, including where the documents are available for inspection.

The link below will take you to the relevant page on our website which will itself include a link to the GMCA consultation page.

<http://www.rochdale.gov.uk/planning-and-building/local-planning-policy/the-local-plan/Pages/places-for-everyone-plan.aspx>

I hope this is helpful but if you have any further queries please contact a member of the Strategic Planning Team on 01706 924252 or email strategic.planning@rochdale.gov.uk

Kind regards

Planning & Development



Rochdale Borough Council

Floor 3, Number One Riverside

Smith Street, Rochdale, OL16 1XU

To access our services go to www.rochdale.gov.uk

For news and social media updates go to www.rochdale.gov.uk/news

Please consider the environment before printing this email.

3. List of Specific Consultation Bodies

Specific consultation bodies
The Coal Authority
The Environment Agency
The Historic Buildings and Monuments Commission for England (Historic England)
Natural England
The Office of Rail Regulation
Highways England
Transport for Greater Manchester
Adjacent local authorities* <ul style="list-style-type: none">- Manchester City Council- Calderdale Council- Oldham Council- Bury Council- Rossendale Council- Tameside Council- Wigan Council- Salford City Council- Trafford Council- Stockport City Council- Bolton Council- Lancashire County Council- Greater Manchester Combined Authority (GMCA)
NHS Heywood, Middleton and Rochdale Clinical Commissioning Group (HMR CCG)
Relevant telecommunications companies
Relevant electricity and gas companies
Relevant water and sewerage undertakers
Homes England
Local Nature Partnerships

4. Statement of Representation Procedure Notice

Statement of Representation Procedure Notice

(Regulation 19: The Town and Country Planning (Local Planning) (England) Regulations 2012)

August 2021

This statement relates to the Places for Everyone Joint Development Plan Publication Draft 2021 (PfE2021). A brief explanation of the background of this document and its relationship to other development plan documents being produced by the relevant nine Greater Manchester districts is provided below.

Background

In 2014, the ten Greater Manchester local authorities agreed to prepare a joint Development Plan Document, the Greater Manchester Spatial Framework (GMSF), with the GMCA co-ordinating its production on behalf of the ten districts. In December 2020, Stockport Council took the decision to withdraw from the GMSF. Subsequently, the nine remaining authorities (Bolton, Bury, Manchester, Oldham, Rochdale, Salford, Trafford, Tameside and Wigan), agreed to continue to progress a joint Development Plan Document for themselves, known as Places for Everyone, which will form part of their individual district local plans.

PfE2021 provides the strategic policy framework for the districts including the overall scale and distribution of development, the spatial strategy, strategic site allocations and Green Belt boundary amendments together with a number of strategic thematic policies which will be used to manage development and determine planning applications in the individual districts. PfE2021 is accompanied by a Policies Map which shows the allocations and designations in the Plan.

Documents available for inspection

PfE2021 and supporting/background evidence documents are published on the GMCA Website on behalf of the nine districts. Additionally, copies of PfE2021 documentation will be made available in accordance with the Town and Country Planning (Local Planning) (England) Regulations 2012 and the requirements of each district's Statement of Community Involvement (SCI).

In Rochdale a hard copy of PfE2021 will be available at all open libraries in the borough. Find out which libraries are currently open at: <http://www.rochdale.gov.uk/library-services/local-libraries/Pages/default.aspx>

Period of Submission for Representations

Representations are invited on the PfE 2021, Publication Draft for a period of eight weeks from Monday 9th August until 23:45 3rd October 2021.

Representations at this stage should only relate to PfE2021 and its supporting/evidence base documents which have been published alongside it. Comments made previously, during stages of consultation in relation to the GMSF, have been summarised in the Statement of Consultation report, which will form part of the submission documentation.

Whilst representations may be made on any point in respect of PfE2021 and its supporting/evidence base documents, only those pertaining to the four tests of soundness¹ will be taken into account by the Inspector at the Examination.

¹ Plans are sound if they are: positively prepared; justified; effective; and consistent with national policy (National Planning Policy Framework, paragraph 35)

How to make representations

Representations can be made by

Preferably completing the online response form at: www.gmconsult.org

Alternatively, downloading the response form available on the GMCA Website and emailing it to placesforeveryone@greatermanchester-ca.gov.uk

You can also submit your comments to us by:

- o email to: placesforeveryone@greatermanchester-ca.gov.uk
- o post to: The Planning and Housing Team, Greater Manchester Combined Authority, Broadhurst House, 56 Oxford Street, Manchester, M1 6EU

What Happens Next

Once the period for making representations finishes, it is intended to submit the PfE2021 Plan to the Secretary of State for Communities and Local Government so that it can be assessed through an Examination in Public by an appointed Planning Inspector(s).

It will be the role of the Independent Planning Inspector(s) to examine whether the plan meets the tests of soundness in the National Planning Policy Framework and

meets all the relevant legislative requirements All representations received before the deadline will be submitted electronically to the Secretary of State for consideration by the Planning Inspector(s) as part of the Examination in Public. Comments and names will be published. Full details of how your information will be shared can be found in the PfE2021 Privacy Notice.

Please refer to the representation guidance notes when preparing representations.

How to participate in the Examination

By using the response form you will be asked whether you wish to participate in the Examination and whether you wish to be notified of any of the following:

- Submission of the PfE2021 for independent examination.
- Publication of the Inspector's Report on the Examination of the PfE2021.
- The Adoption of the PfE2021

Alternatively, if you make representations by email or by letter, you should state whether you wish to participate in the Examination and/or be kept informed of the progress of PfE2021.

5. Screenshots of Council Webpage

Screenshot 1 of 6:

Places for Everyone plan

Places for Everyone is a long-term plan for new jobs, homes, and sustainable growth. Greater Manchester Combined Authority (GMCA) created the plan for Bolton, Bury, Manchester, Oldham, Rochdale, Salford, Tameside, Trafford and Wigan.

Aims of the Places for Everyone plan

The Places for Everyone plan aims to:

- Manage land development up until 2037.
- Plan new homes, employment space and infrastructure.
- Cater for our growing populations.
- Boost the prosperity of Greater Manchester and make it one of the best places in the world to live and work.
- Ensure housing and employment opportunities are spread more evenly across Greater Manchester so boroughs like Rochdale do not lag behind.

Have your say

Closing date: 11.45pm, Sunday, 3 October 2021

We want you to tell us what you think about the plan before GMCA put it in place. This is the final consultation before we submit the plan to the government.

Screenshot 2 of 6:

Have your say

Closing date: 11.45pm, Sunday, 3 October 2021

We want you to tell us what you think about the plan before GMCA put it in place. This is the final consultation before we submit the plan to the government.

- [View the plan and supporting documents on the GMCA website](#)
- [View hard copies of the plan at any of the open libraries in the borough](#)

2021 Places For Everyone consultation

Consultation questions

The consultation will only ask you the following questions:

- **Is the plan positively prepared?** We'd like to know if you think it promotes economic growth and makes provision for homes, employment and infrastructure.
- **Have we justified the plan?** We'd like to know if you think we've considered other policies and based our approach on the most up to date and robust evidence.
- **Is the plan effective?** We'd like to know if you think we can achieve the policies within the plan period and if you think they are based on effective joint working with other neighbouring authorities.
- **Is the plan consistent?** We'd like to know if you think the policies are consistent with those in the [National Planning Policy Framework](#).

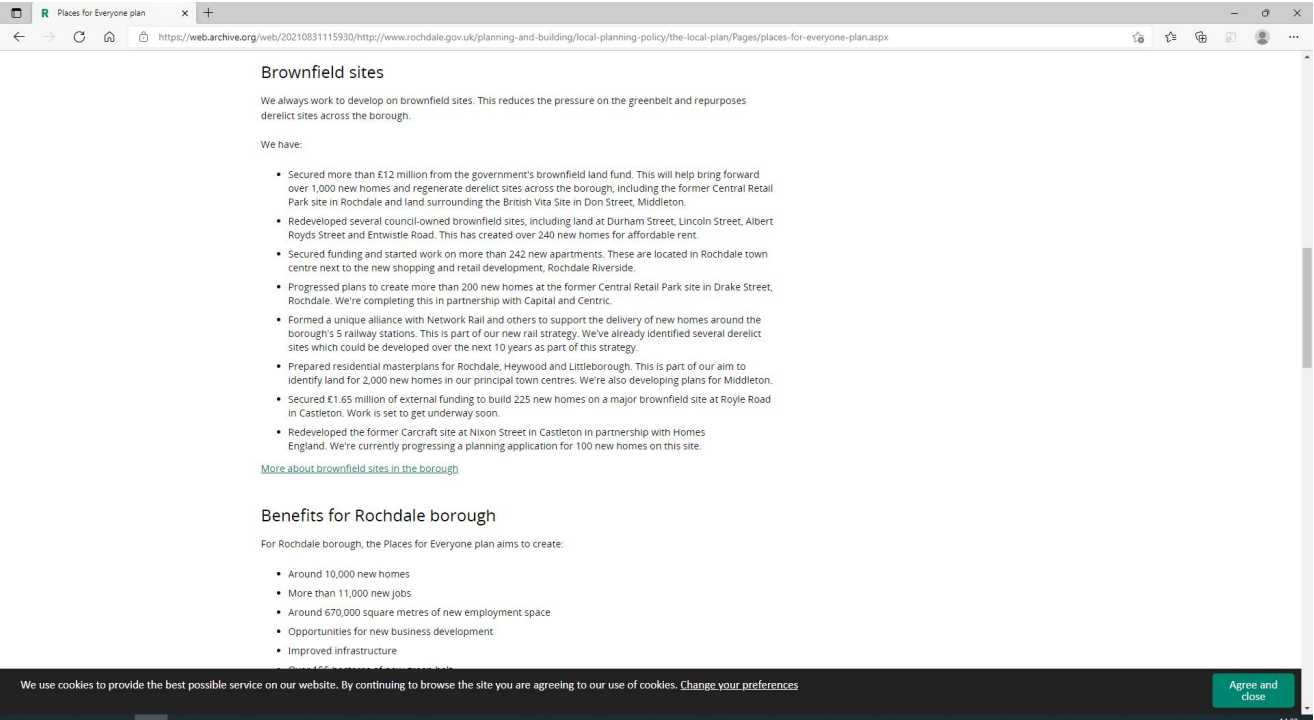
Next steps

We'll submit the plan and the responses from the consultation to the government. We aim to do this by early 2022.

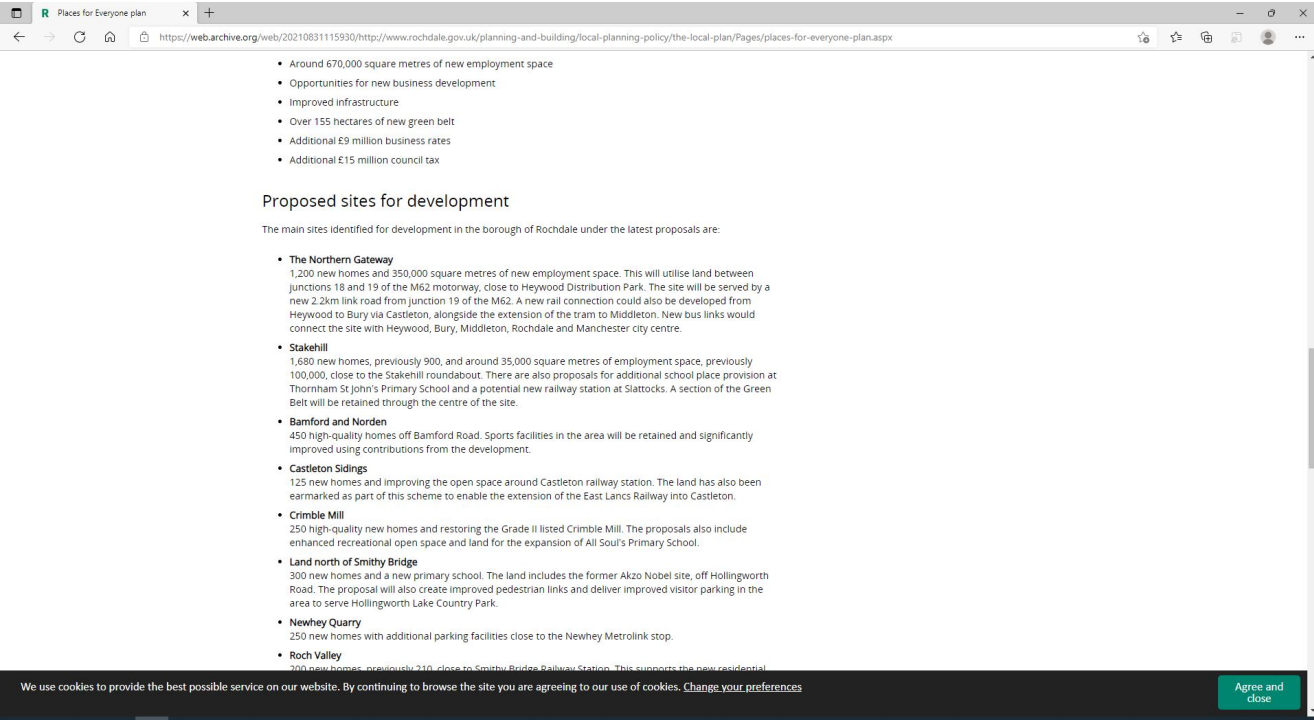
Brownfield sites

We always work to develop on brownfield sites. This reduces the pressure on the greenbelt and repurposes derelict sites across the borough. We have:

Screenshot 3 of 6:



Screenshot 4 of 6:



Screenshot 5 of 6:

Places for Everyone plan

<https://web.archive.org/web/20210831115930/http://www.rochdale.gov.uk/planning-and-building/local-planning-policy/the-local-plan/Pages/places-for-everyone-plan.aspx>

- **Roch Valley**
200 new homes, previously 210, close to Smithy Bridge Railway Station. This supports the new residential relief road between Smithy Bridge Road and Albert Royds Street and contributes to support new local school places.
- **Trows Farm, Castleton**
This proposal creates around 550 new homes (previously 360) on land south of Crown Business Park and contributes to a new primary school to serve Castleton. New walking and cycling routes will also be delivered as part of this allocation.

Changes to the plan

We've made some changes to the plan following the consultations in 2016 and 2019.

- The Kingsway South allocation in Rochdale, which proposed 182 homes and 130,980 square metres of employment space on land south of junction 21, has now been removed from the plan, retaining 80 hectares of green belt.
- Green Belt loss has been reduced further. 60.3% of the borough will remain in the green belt if this version of the plan is adopted. **If all the sites proposed in this draft plan are developed, Rochdale borough would still have a higher proportion of green belt than any other borough in Greater Manchester.**
- We've identified a potential residential relief road between Smithy Bridge Road and Albert Royds Street to address traffic issues and support the delivery of new homes in this part of the borough.
- The number of homes at the Northern Gateway site, junctions 18 and 19 of the M62, has been reduced from 1,600 to 1,200. The employment space has reduced from 600,000 square metres to 350,000 square metres.
- The number of new homes proposed at the Stakehill site has increased from 900 to 1,680. The employment space has been reduced from 100,000 square metres to 35,000 square metres.
- The proposal for Trows Farm in Castleton is now for the creation of around 550 new homes instead of 360. We've also identified an alternative site for a new primary school within the area.
- The number of homes proposed for the Roch Valley, close to Smithy Bridge railway station, has reduced slightly, from 210 to 200 new homes.

Funding to support improvements

We've secured external funding to support major infrastructure improvements, which include:

- £23 million for the delivery of a new link road at Heywood, just off junction 19 of the M62. This is due to complete in spring 2022.
- £3.5 million for the delivery of a new loop road within Kingsway Business Park.

We use cookies to provide the best possible service on our website. By continuing to browse the site you are agreeing to our use of cookies. [Change your preferences](#)

Agree and close

Screenshot 6 of 6:

Places for Everyone plan

<https://web.archive.org/web/20210831115930/http://www.rochdale.gov.uk/planning-and-building/local-planning-policy/the-local-plan/Pages/places-for-everyone-plan.aspx>

- £3.5 million for the delivery of a new loop road within Kingsway Business Park.
- £11.5 million for the construction of a brand new cycle lane between Castleton and Rochdale town centre. We've already held the first consultation for this.
- £500,000 to further develop proposals to extend the tram network to Heywood.
- Almost £30 million of government funding has been committed for major flood defence schemes across the borough to protect homes, business and infrastructure
- Government funding for the new Edgar Wood Academy which we'll build on the land to the north of Bowlee Playing Fields, to the east of Heywood Old Road. The school will cater for 900 pupils in Years 7 to 11.
- Department of Education funding to demolish old school buildings and re-build brand new ones, including Littleborough Community Primary School and Nursery. There will be no disruption to schooling during the build. There is no need for any temporary teaching accommodation. We aim to complete this work by the end of 2022.

Greater Manchester Spatial Framework

We previously referred to some of the proposals in the Places for Everyone plan as the Greater Manchester Spatial Framework (GMSF).

In December 2020, Stockport Council withdrew from the GMSF. The remaining 9 authorities in Greater Manchester agreed to progress a joint plan, known as Places for Everyone.

- [View archived Spatial Framework content and documents](#)

Related pages

- [The Local Plan](#)
- [Improving the borough](#)
- [Have your say](#)

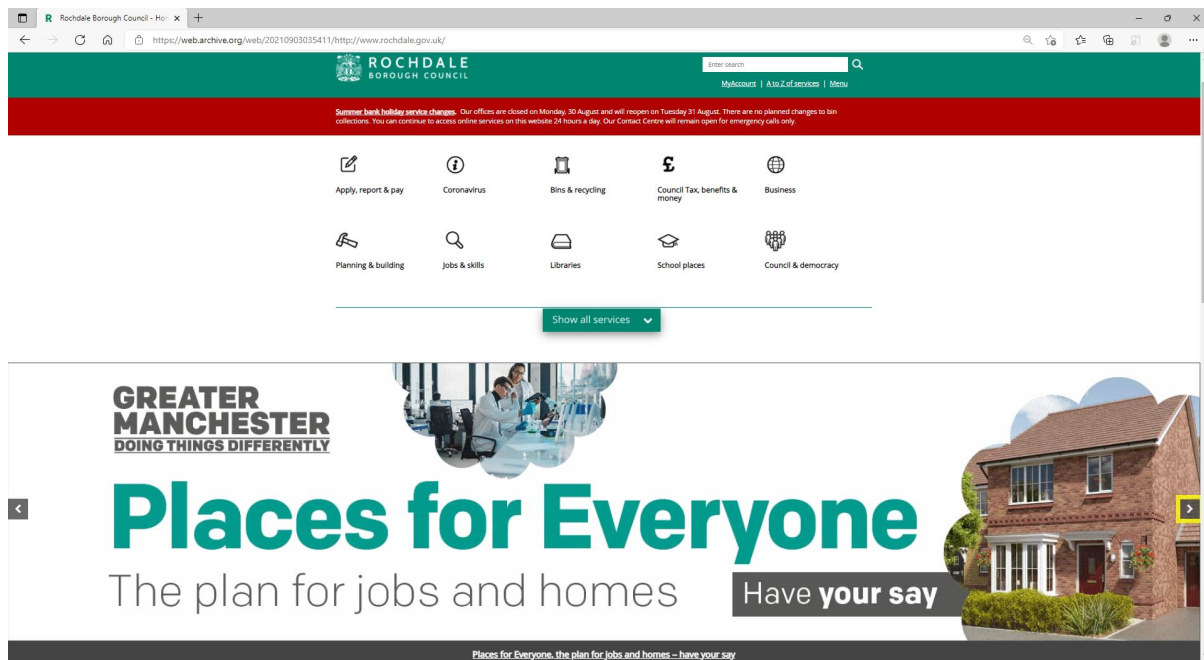
[Return to top](#)

ROCHDALE [Help](#) [Our partnerships](#) [Stay connected](#)

We use cookies to provide the best possible service on our website. By continuing to browse the site you are agreeing to our use of cookies. [Change your preferences](#)

Agree and close

6. Screenshot of Consultation Banner on Rochdale Council homepage



7. Proposed Site Allocation Site Notices

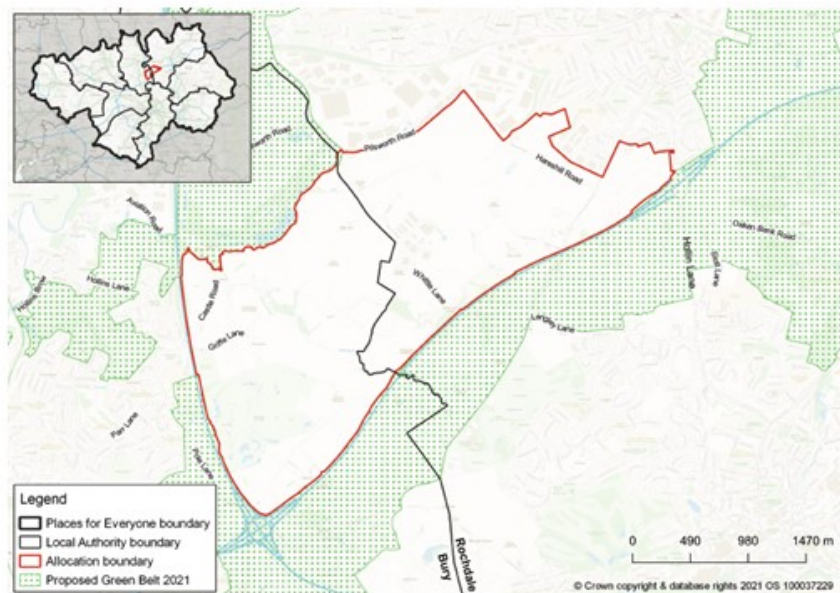
JPA 1.1 Northern Gateway (Heyworth/Pilsworth)

Places for Everyone

Proposed Site Allocation

Places for Everyone is a long-term plan of nine Greater Manchester districts (Bolton, Bury, Manchester, Oldham, Rochdale, Salford, Tameside, Trafford and Wigan) for jobs, new homes, and sustainable growth. It has been prepared by Greater Manchester Combined Authority on behalf of the nine districts.

In partnership with nine districts, it will help meet the city-region's needs up until 2037.



Land at JPA1.1 Northern Gateway (Heywood/Pilsworth) has been allocated for around 1,200 homes and 1,200,000 square metres of employment floorspace, as part of the Joint Development Plan.

For further information on the plan and supporting evidence, and to submit your comments please visit www.gmconsult.org

If you cannot access this information online, please call 0161 778 7006, where you can leave your name and telephone number on an answerphone and someone will return your call.

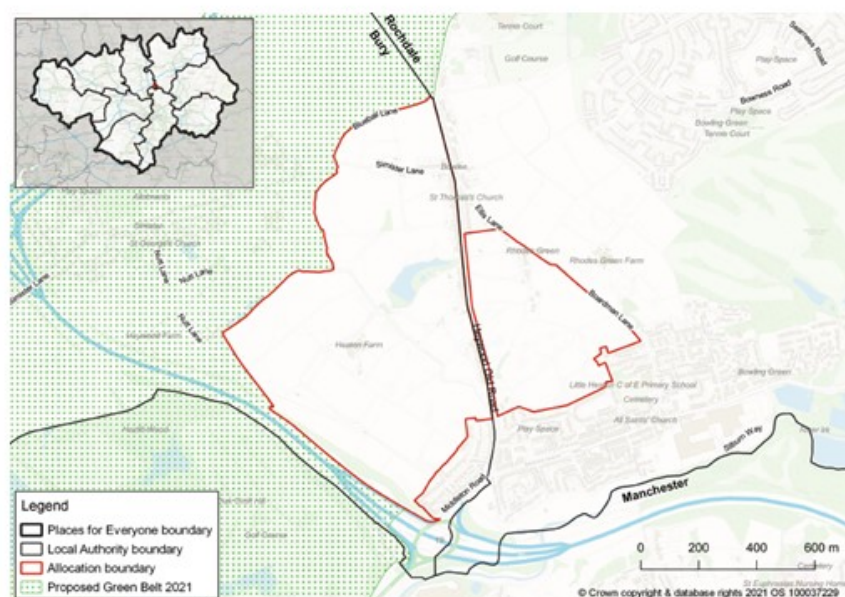
Consultation is open from 9 August 2020 to 3 October 2021.



Proposed Site Allocation

Places for Everyone is a long-term plan of nine Greater Manchester districts (Bolton, Bury, Manchester, Oldham, Rochdale, Salford, Tameside, Trafford and Wigan) for jobs, new homes, and sustainable growth. It has been prepared by Greater Manchester Combined Authority on behalf of the nine districts.

In partnership with nine districts, it will help meet the city-region's needs up until 2037.



Land at JPA1.2 Northern Gateway (Simister & Bowlee) has been allocated for around 1,550 homes as part of the Joint Development Plan.

For further information on the plan and supporting evidence, and to submit your comments please visit www.gmconsult.org

If you cannot access this information online, please call 0161 778 7006, where you can leave your name and telephone number on an answerphone and someone will return your call.

Consultation is open from 9 August 2020 to 3 October 2021.



SCAN ME

Places for Everyone is a long-term plan of nine Greater Manchester districts (Bolton, Bury, Manchester, Oldham, Rochdale, Salford, Tameside, Trafford and Wigan) for jobs, new homes, and sustainable growth. It has been prepared by Greater Manchester Combined Authority on behalf of the nine districts.

Legend

- Places for Everyone boundary
- Local Authority boundary
- Allocation boundary
- Proposed Green Belt 2021

0 400 800 1200 m

© Crown copyright & database rights 2021 OS 100037223

Consultation is open from 9 August 2021 to 3 October 2021.

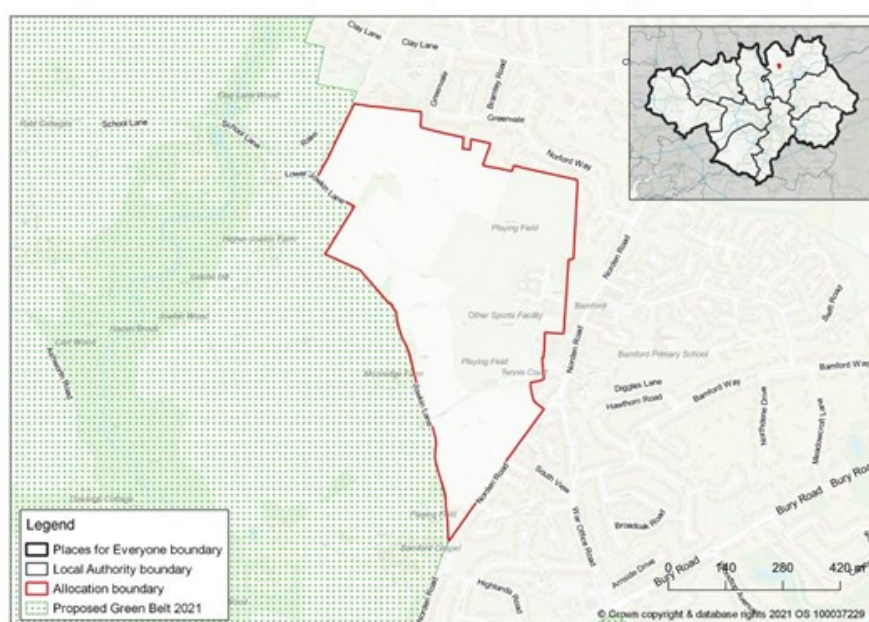


Please do not remove this notice until 3 October 2021.

Proposed Site Allocation

Places for Everyone is a long-term plan of nine Greater Manchester districts (Bolton, Bury, Manchester, Oldham, Rochdale, Salford, Tameside, Trafford and Wigan) for jobs, new homes, and sustainable growth. It has been prepared by Greater Manchester Combined Authority on behalf of the nine districts.

In partnership with nine districts, it will help meet the city-region's needs up until 2037.



Land at JPA 19 Norden / Bamford has been allocated for around 450 homes, as part of the Joint Development Plan.

For further information on the plan and supporting evidence, and to submit your comments please visit www.gmconsult.org

If you cannot access this information online, please call 0161 778 7006, where you can leave your name and telephone number on an answerphone and someone will return your call.

Consultation is open from 9 August 2021 to 3 October 2021.



SCAN ME

Proposed Site Allocation

Places for Everyone is a long-term plan of nine Greater Manchester districts (Bolton, Bury, Manchester, Oldham, Rochdale, Salford, Tameside, Trafford and Wigan) for jobs, new homes, and sustainable growth. It has been prepared by Greater Manchester Combined Authority on behalf of the nine districts.

In partnership with nine districts, it will help meet the city-region's needs up until 2037.



Land at JPA20 Castleton Sidings has been allocated for around 125 homes, as part of the Joint Development Plan.

For further information on the plan and supporting evidence, and to submit your comments please visit www.gmconsult.org

If you cannot access this information online, please call 0161 778 7006, where you can leave your name and telephone number on an answerphone and someone will return your call.

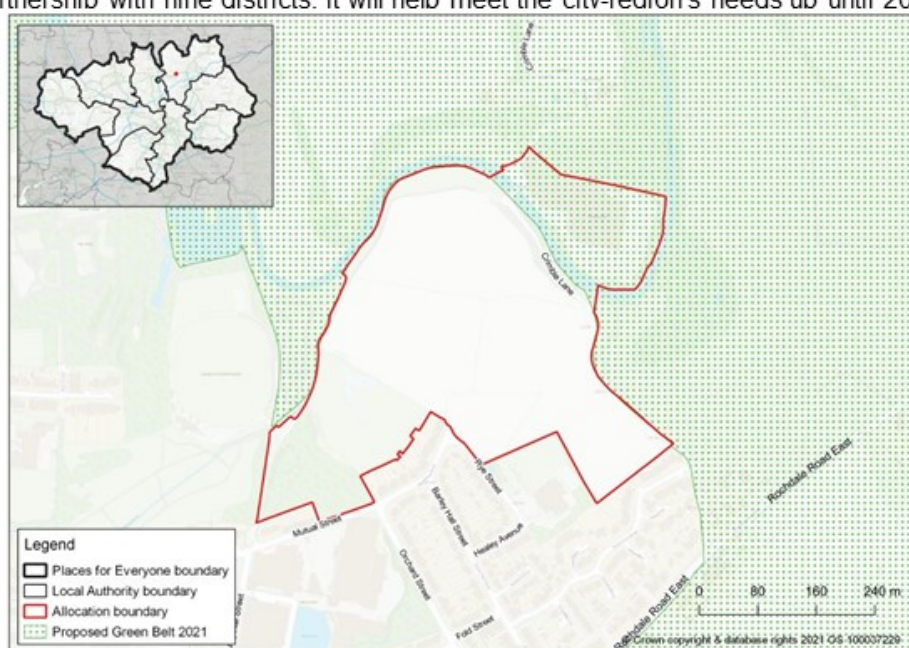
Consultation is open from 9 August 2021 to 3 October 2021.



Proposed Site Allocation

Places for Everyone is a long-term plan of nine Greater Manchester districts (Bolton, Bury, Manchester, Oldham, Rochdale, Salford, Tameside, Trafford and Wigan) for jobs, new homes, and sustainable growth. It has been prepared by Greater Manchester Combined Authority on behalf of the nine districts.

In partnership with nine districts, it will help meet the city-region's needs up until 2037.



Land at JPA21 Crimble Mill has been allocated for around 250 homes, as part of the Joint Development Plan.

For further information on the plan and supporting evidence, and to submit your comments please visit www.gmconsult.org

If you cannot access this information online, please call 0161 778 7006, where you can leave your name and telephone number on an answerphone and someone will return your call.

Consultation is open from 9 August 2021 to 3 October 2021.



SCAN ME

Proposed Site Allocation

Places for Everyone is a long-term plan of nine Greater Manchester districts (Bolton, Bury, Manchester, Oldham, Rochdale, Salford, Tameside, Trafford and Wigan) for jobs, new homes, and sustainable growth. It has been prepared by Greater Manchester Combined Authority on behalf of the nine districts.

In partnership with nine districts, it will help meet the city-region's needs up until 2037.



Land at JPA22 North of Smithy Bridge has been allocated for around 300 homes, as part of the Joint Development Plan.

For further information on the plan and supporting evidence, and to submit your comments please visit www.gmconsult.org

If you cannot access this information online, please call 0161 778 7006, where you can leave your name and telephone number on an answerphone and someone will return your call.

Consultation is open from 9 August 2021 to 3 October 2021.



SCAN ME

Proposed Site Allocation

Places for Everyone is a long-term plan of nine Greater Manchester districts (Bolton, Bury, Manchester, Oldham, Rochdale, Salford, Tameside, Trafford and Wigan) for jobs, new homes, and sustainable growth. It has been prepared by Greater Manchester Combined Authority on behalf of the nine districts.

In partnership with nine districts, it will help meet the city-region's needs up until 2037.



Land at JPA23 Newhey Quarry has been allocated for around 250 homes, as part of the Joint Development Plan.

For further information on the plan and supporting evidence, and to submit your comments please visit www.gmconsult.org

If you cannot access this information online, please call 0161 778 7006, where you can leave your name and telephone number on an answerphone and someone will return your call.

Consultation is open from 9 August 2021 to 3 October 2021.

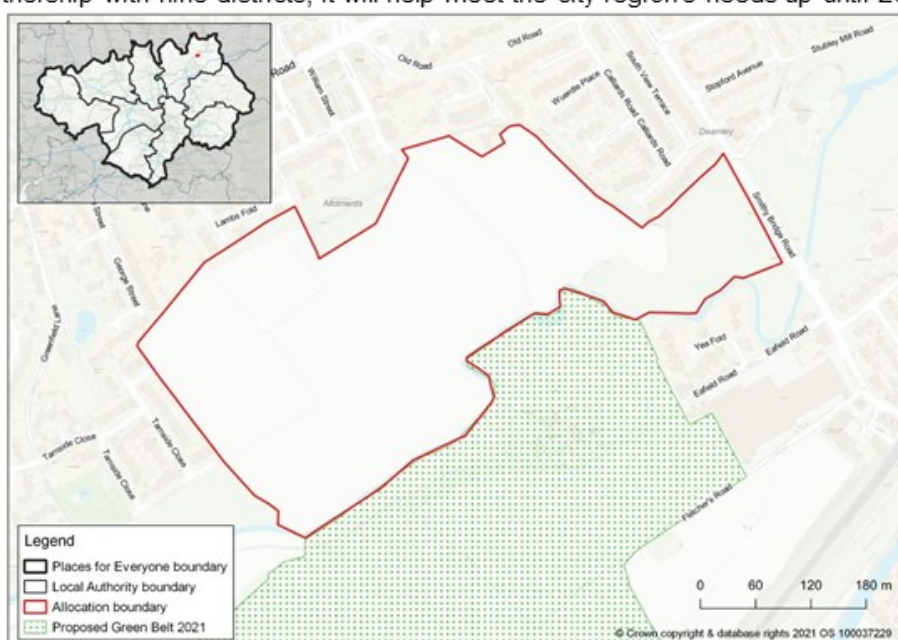


SCAN ME

Proposed Site Allocation

Places for Everyone is a long-term plan of nine Greater Manchester districts (Bolton, Bury, Manchester, Oldham, Rochdale, Salford, Tameside, Trafford and Wigan) for jobs, new homes, and sustainable growth. It has been prepared by Greater Manchester Combined Authority on behalf of the nine districts.

In partnership with nine districts, it will help meet the city-region's needs up until 2037.



Land at JPA24 Roch Valley has been allocated for around 200 homes, as part of the Joint Development Plan.

For further information on the plan and supporting evidence, and to submit your comments please visit www.gmconsult.org

If you cannot access this information online, please call 0161 778 7006, where you can leave your name and telephone number on an answerphone and someone will return your call.

Consultation is open from 9 August 2021 to 3 October 2021.



SCAN ME

Proposed Site Allocation

Places for Everyone is a long-term plan of nine Greater Manchester districts (Bolton, Bury, Manchester, Oldham, Rochdale, Salford, Tameside, Trafford and Wigan) for jobs, new homes, and sustainable growth. It has been prepared by Greater Manchester Combined Authority on behalf of the nine districts.

In partnership with nine districts, it will help meet the city-region's needs up until 2037.



Land at JPA25 Trows Farm has been allocated for around 550 homes, as part of the Joint Development Plan.

For further information on the plan and supporting evidence, and to submit your comments please visit www.gmconsult.org

If you cannot access this information online, please call 0161 778 7006, where you can leave your name and telephone number on an answerphone and someone will return your call.

Consultation is open from 9 August 2021 to 3 October 2021.



SCAN ME

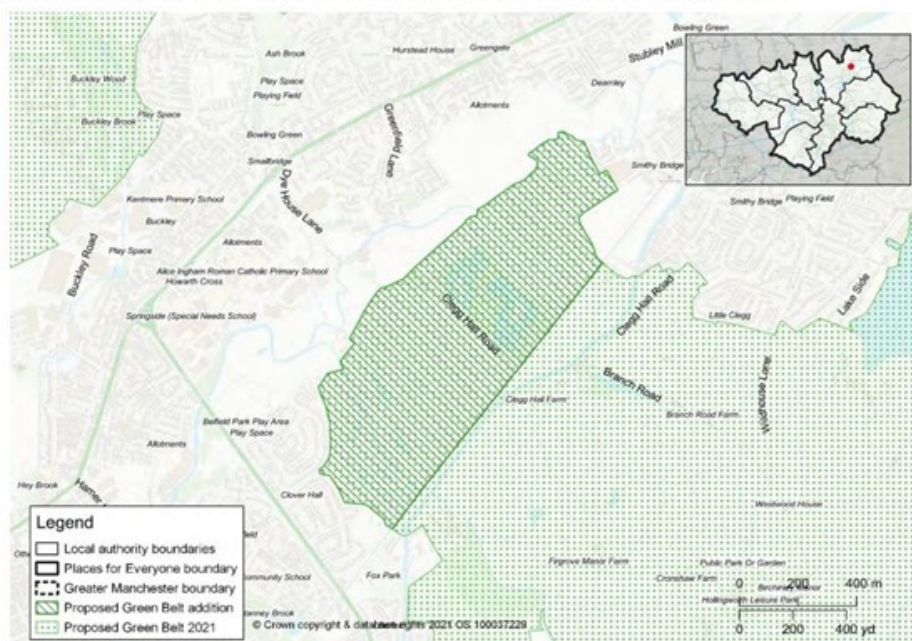
8. Proposed Green Belt Additions Site Notices

GMA 18 Land within the Roch Valley, Smallbridge

Places for Everyone

Proposed Green Belt Addition

Land at GBA 18 Land within the Roch Valley, Smallbridge has been designated for Green Belt, as part of the 'Places for Everyone' Joint Development Plan.



Places for Everyone is a long-term plan of nine Greater Manchester districts (Bolton, Bury, Manchester, Oldham, Rochdale, Salford, Tameside, Trafford and Wigan) for jobs, new homes, and sustainable growth. It has been prepared by the Greater Manchester Combined Authority on behalf of the nine districts

In partnership with nine districts, it will help meet the city-region's needs up until 2037.

For further information on the plan and supporting evidence, and to submit your comments please visit www.gmconsult.org

If you cannot access this information online, please call 0161 778 7006, where you can leave your name and telephone number on an answerphone and someone will return your call.

Consultation is open from 9 August 2021 to 3 October 2021.



SCAN ME

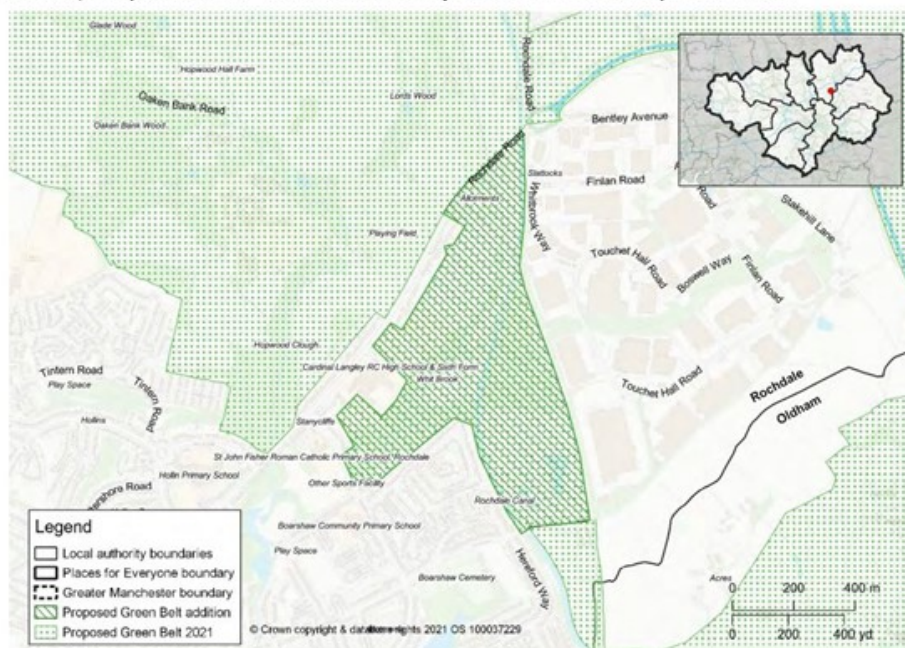
GREATER MANCHESTER
DOING THINGS DIFFERENTLY

Do not remove this notice until 3 October 2021

gmconsult.org

Proposed Green Belt Addition

Land at GBA 19 Land west of Stakehill Business Park has been designated for Green Belt, as part of the 'Places for Everyone' Joint Development Plan.



Places for Everyone is a long-term plan of nine Greater Manchester districts (Bolton, Bury, Manchester, Oldham, Rochdale, Salford, Tameside, Trafford and Wigan) for jobs, new homes, and sustainable growth. It has been prepared by the Greater Manchester Combined Authority on behalf of the nine districts

In partnership with nine districts, it will help meet the city-region's needs up until 2037.

For further information on the plan and supporting evidence, and to submit your comments please visit www.gmconsult.org

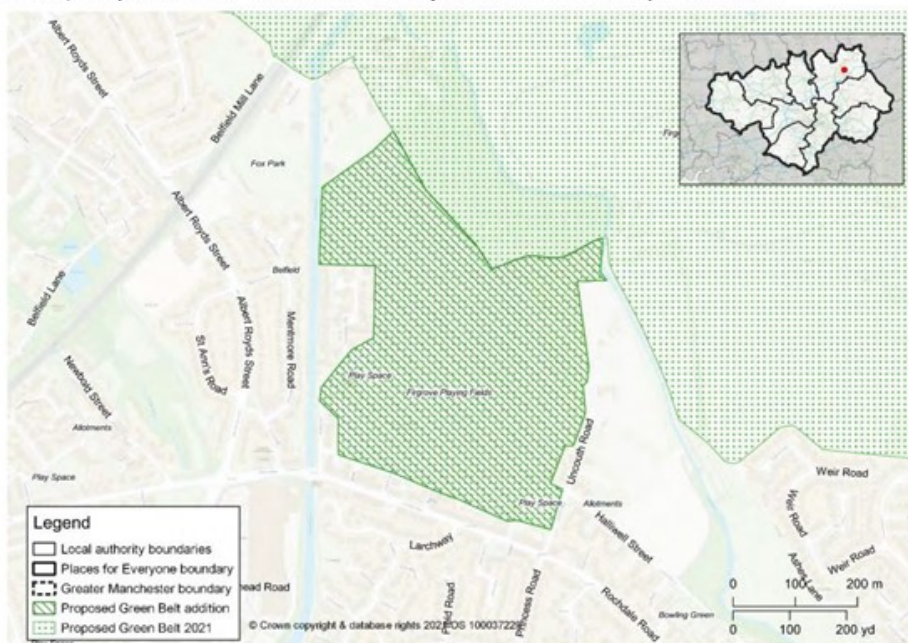
If you cannot access this information online, please call 0161 778 7006, where you can leave your name and telephone number on an answerphone and someone will return your call.

Consultation is open from 9 August 2021 to 3 October 2021.



Proposed Green Belt Addition

Land at GBA 20 Land at Firgrove Playing Fields, Rochdale has been designated for Green Belt, as part of the 'Places for Everyone' Joint Development Plan.



Places for Everyone is a long-term plan of nine Greater Manchester districts (Bolton, Bury, Manchester, Oldham, Rochdale, Salford, Tameside, Trafford and Wigan) for jobs, new homes, and sustainable growth. It has been prepared by the Greater Manchester Combined Authority on behalf of the nine districts

In partnership with nine districts, it will help meet the city-region's needs up until 2037.

For further information on the plan and supporting evidence, and to submit your comments please visit www.gmconsult.org

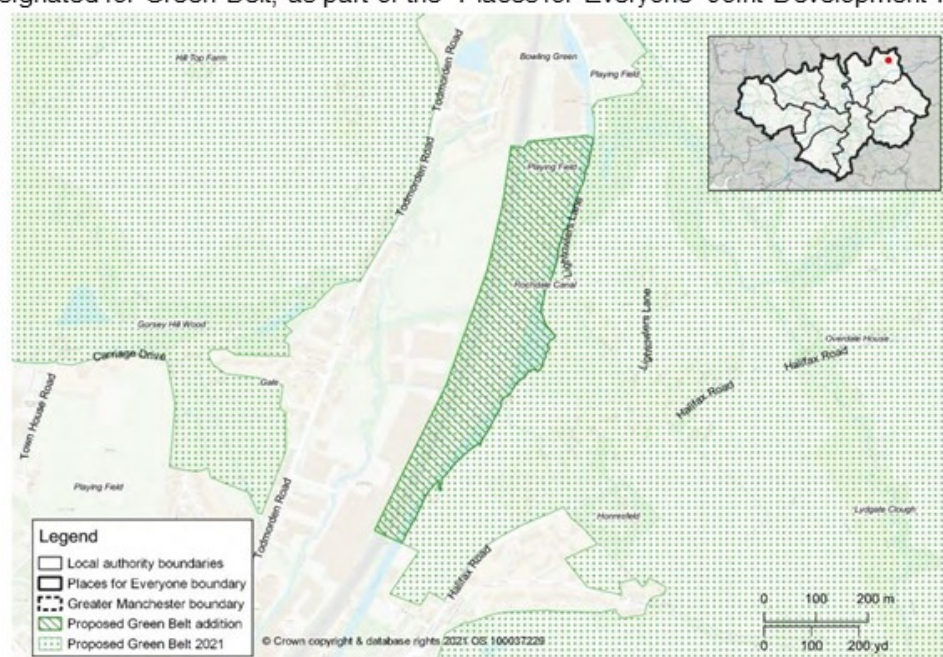
If you cannot access this information online, please call 0161 778 7006, where you can leave your name and telephone number on an answerphone and someone will return your call.

Consultation is open from 9 August 2021 to 3 October 2021.



SCAN ME

Land at GBA21 Land between railway line and Rochdale Canal, Littleborough has been designated for Green Belt, as part of the 'Places for Everyone' Joint Development Plan.



In partnership with nine districts, it will help meet the city-region's needs up until 2037

If you cannot access this information online, please call 0161 778 7006, where you can leave your name and telephone number on an answerphone and someone will return your call.

Consultation is open from 9 August 2021 to 3 October 2021.



Proposed Green Belt Addition

Land at GBA 22 Land north of St Andrew's Church, Dearnley has been designated for Green Belt, as part of the 'Places for Everyone' Joint Development Plan.



Places for Everyone is a long-term plan of nine Greater Manchester districts (Bolton, Bury, Manchester, Oldham, Rochdale, Salford, Tameside, Trafford and Wigan) for jobs, new homes, and sustainable growth. It has been prepared by the Greater Manchester Combined Authority on behalf of the nine districts

In partnership with nine districts, it will help meet the city-region's needs up until 2037.

For further information on the plan and supporting evidence, and to submit your comments please visit www.gmconsult.org

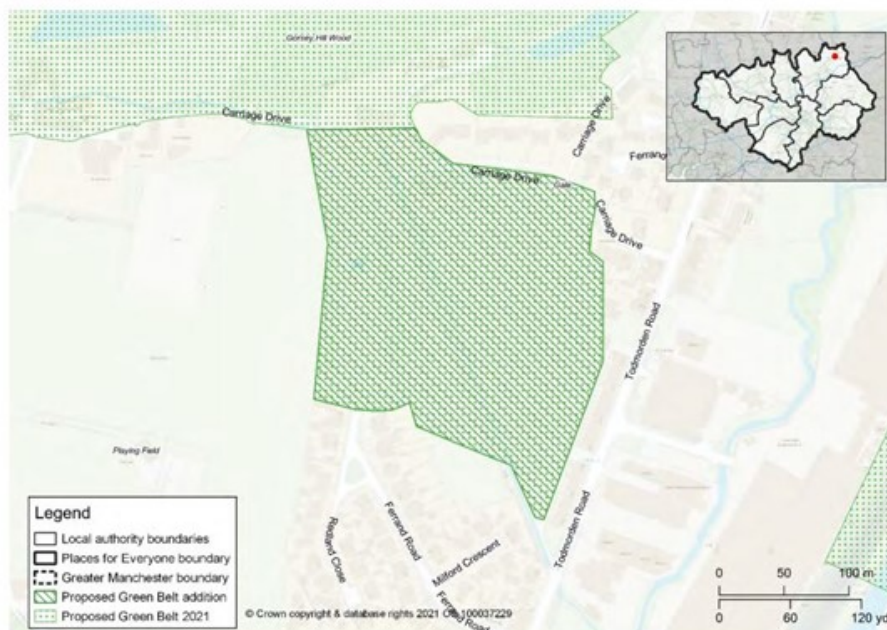
If you cannot access this information online, please call 0161 778 7006, where you can leave your name and telephone number on an answerphone and someone will return your call.

Consultation is open from 9 August 2021 to 3 October 2021.



Proposed Green Belt Addition

Land at GBA 23 Land at Townhouse Brook, Littleborough has been designated for Green Belt, as part of the 'Places for Everyone' Joint Development Plan.



Places for Everyone is a long-term plan of nine Greater Manchester districts (Bolton, Bury, Manchester, Oldham, Rochdale, Salford, Tameside, Trafford and Wigan) for jobs, new homes, and sustainable growth. It has been prepared by the Greater Manchester Combined Authority on behalf of the nine districts

In partnership with nine districts, it will help meet the city-region's needs up until 2037.

For further information on the plan and supporting evidence, and to submit your comments please visit www.gmconsult.org

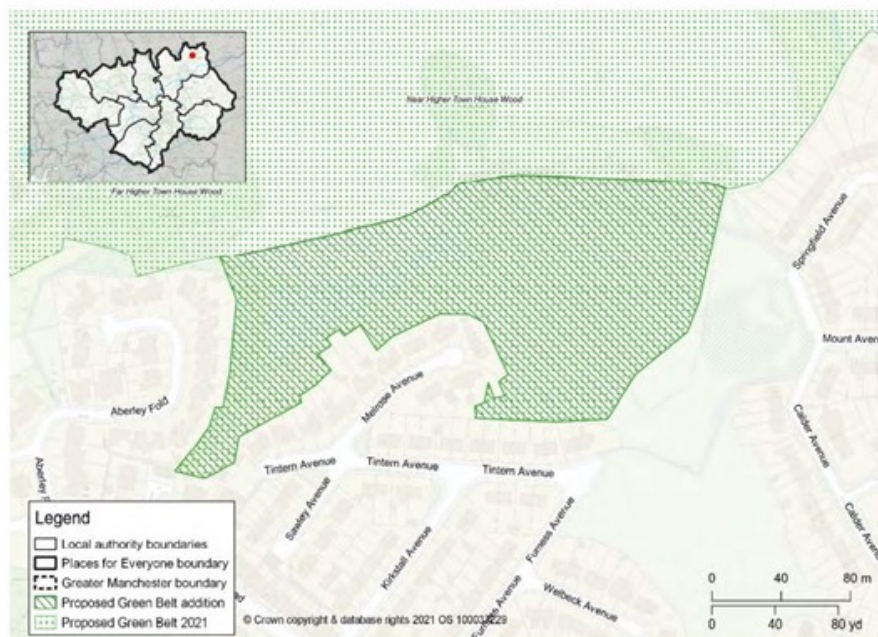
If you cannot access this information online, please call 0161 778 7006, where you can leave your name and telephone number on an answerphone and someone will return your call.

Consultation is open from 9 August 2021 to 3 October 2021.



Proposed Green Belt Addition

Land at GBA 24 Land north of Shore, Littleborough has been designated for Green Belt, as part of the 'Places for Everyone' Joint Development Plan.



Places for Everyone is a long-term plan of nine Greater Manchester districts (Bolton, Bury, Manchester, Oldham, Rochdale, Salford, Tameside, Trafford and Wigan) for jobs, new homes, and sustainable growth. It has been prepared by the Greater Manchester Combined Authority on behalf of the nine districts

In partnership with nine districts, it will help meet the city-region's needs up until 2037.

For further information on the plan and supporting evidence, and to submit your comments please visit www.gmconsult.org

If you cannot access this information online, please call 0161 778 7006, where you can leave your name and telephone number on an answerphone and someone will return your call.

Consultation is open from 9 August 2021 to 3 October 2021.



Proposed Green Belt Addition

Land at GBA 25 Land at Summit, Heywood has been designated for Green Belt, as part of the 'Places for Everyone' Joint Development Plan.



Places for Everyone is a long-term plan of nine Greater Manchester districts (Bolton, Bury, Manchester, Oldham, Rochdale, Salford, Tameside, Trafford and Wigan) for jobs, new homes, and sustainable growth. It has been prepared by the Greater Manchester Combined Authority on behalf of the nine districts

In partnership with nine districts, it will help meet the city-region's needs up until 2037.

For further information on the plan and supporting evidence, and to submit your comments please visit www.gmconsult.org

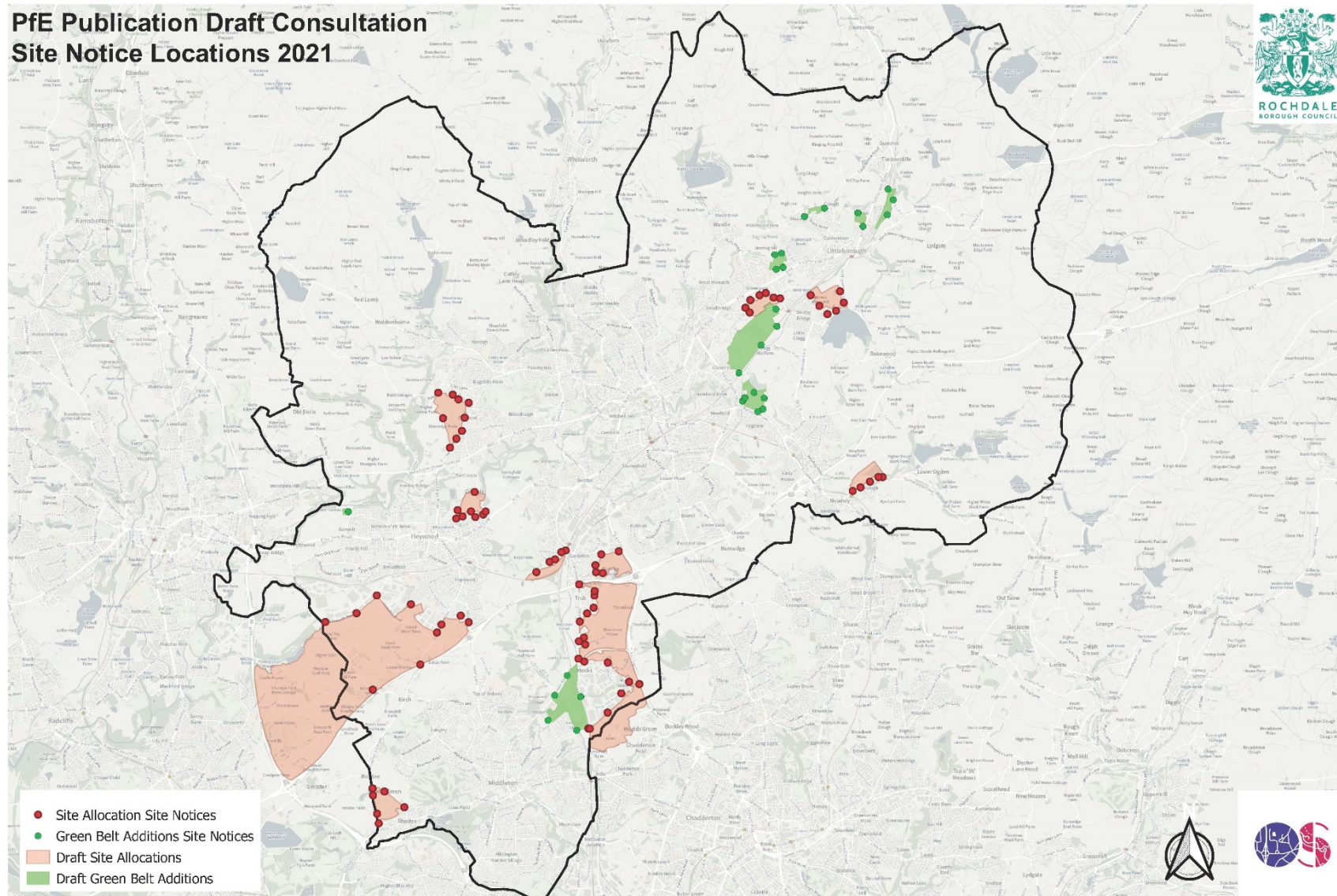
If you cannot access this information online, please call 0161 778 7006, where you can leave your name and telephone number on an answerphone and someone will return your call.

Consultation is open from 9 August 2021 to 3 October 2021.



SCAN ME

9. Map showing Poster Locations



10. Social Media Posts

Facebook Posts:

Rochdale Borough Council
★ Favorites · August 31 · 🌐

Places for Everyone is a plan which will bring new jobs, homes and transport links to the borough between now and 2037.
Find out more at: bit.ly/3jmLD8T

GREATER MANCHESTER
DOING THINGS DIFFERENTLY

Making the most of our **brownfield sites**

To take part in the consultation visit gmconsult.org



17,083 People reached 1,252 Engagements Boost Unavailable

👍 Like 💬 Comment ➦ Share 🌐

30 29 Comments 16 Shares

Rochdale Borough Council
★ Favorites · September 21 · 🌐

Places for everyone is not a plan just about buildings. It's about creating better jobs for people who live here.
Find out how the plan does this and take part in the consultation here: www.GMConsult.org

GREATER MANCHESTER
DOING THINGS DIFFERENTLY

Creating **good jobs**

To take part in the consultation visit gmconsult.org



840 People reached 0 Engagements Boost Unavailable

👍 Like 💬 Comment ➦ Share 🌐

Rochdale Borough Council
★ Favorites · October 1 · 🌐

Places for Everyone is a plan to determine the kind of development that will take place across 9 Greater Manchester boroughs, including Rochdale.
The consultation is open until the end of this weekend 🗓️
Find out more about the plan and have your say at www.GMConsult.org

Places for Everyone consultation closes in

2 days

Closes on Sunday 3 October at 23:59

731 People reached 4 Engagements Boost Unavailable

👍 Like 💬 Comment ➦ Share 🌐

Rochdale Borough Council
★ Favorites · October 2 · 🌐

Want to find out more about Places for Everyone and the consultation before it closes tomorrow? 🤔
We've put together a virtual exhibition space to help you get all the information you need 🙌
Take a look 📄 <https://placesforeveryone.consultation.ai/>

Places for Everyone consultation closes in

1 day

Closes on Sunday 3 October at 23:59

813 People reached 4 Engagements Boost Unavailable

👍 Like 💬 Comment ➦ Share 🌐

Twitter Posts:



Rochdale Borough Council

@RochdaleCouncil

Places for Everyone is a plan which will bring new jobs, homes and transport links to the borough between now and 2037.

Find out more at: <http://bit.ly/3jmLD8T>
pic.twitter.com/qETHZCOQxu



Rochdale Borough Council

@RochdaleCouncil

Places for everyone is not a plan just about buildings. It's about creating better jobs for people who live here.

Find out how the plan does this and take part in the consultation here:

<http://www.GMConsult.org>
pic.twitter.com/HA1cJV77Bi



Rochdale Borough Council

@RochdaleCouncil

The Places for Everyone consultation closes at midnight this Sunday (3 October).

We want views on whether:

- 👉 The plan passes the 'tests of soundness'
- 👉 The plan is legally compliant
- 👉 The plan is compliant with the 'duty to co-operate'

Have your say at <http://www.GMConsult.org>
pic.twitter.com/INCubDZaqU

Instagram Posts:

