

Proposed Amendments to the PfE Policies Map compared to the submitted PfE policies map SD2

The role of the policies map is to illustrate geographically the application of policies in the plan. This document illustrates the proposed changes to what is shown on the submission policies map ([SD2](#)), consequential upon the Main Modifications. It has been published for consultation alongside the Main Modifications Schedule.

The table below describes each policies map change and each entry in the table has a corresponding map, detailing the changes proposed to the policies map. The maps illustrate the changes from the submission policies map, therefore they do not illustrate changes from the original Green Belt designation, unless a further change is proposed to the Green Belt boundary as a result of a main modification.

Table of proposed changes to the policies map

Policy Map Change Ref	Policy Map Change	Reason
PMC1	Amend the Policies Map to make it clear that the area of Peak District National Park, lying within Oldham, is excluded from the jurisdiction of the PfE Plan.	To clarify that part of Oldham Borough is within the Peak District National Park and that that area is not subject to policies in the Plan but rather subject to the Peak District National Park development plan.
PMC2	JPA1.2 Simister and Bowlee Amend the policies map to show a single allocation boundary for JPA1.2 Northern Gateway Simister and Bowlee	To provide clarity and ensure effectiveness of the policies map
PMC3	JPA3.2 Timperley Wedge Amend the proposed Green Belt boundary on the policies map, reflecting changes made to JPA3.2 to retain an SBI in the Green Belt	To provide clarity and ensure effectiveness of the policies map
PMC4	JPA7 Elton Reservoir Amend the policies map to reflect the proposed change to the boundary of the retained Green Belt within JPA7	To clarify, ensuring that the whole of Elton Goyt SBI is within the Green Belt and ensure effectiveness of the policies map
PMC5	JPA10 Global Logistics Delete JPA10 from the policies map	To reflect the removal of allocation JPA10 and to ensure effectiveness of the policies map
PMC6	JPA14 Broadbent Moss Amend the policies map to reflect proposed change to the boundary of the Green Belt and to show a single allocation boundary for JPA14 Broadbent Moss	To ensure effectiveness of the policies map
PMC7	JPA18 South of Rosary Road Amend the policies map to reflect proposed change to the boundary of the Green Belt	To ensure effectiveness of the policies map

Policy Map Change Ref	Policy Map Change	Reason
PMC8	JPA26 Hazlehurst Farm Amend the policies map to reflect proposed change to the allocation boundary	To ensure effectiveness of the policies map
PMC9	JPA28 North of Irlam Station Delete JPA28 from the policies map	To reflect the removal of allocation JPA28 and to ensure effectiveness of the policies map
PMC10	JPA32 South of Hyde Amend the proposed Green Belt boundary and allocation boundary on the policies map to retain an SBI in the Green Belt	To provide clarity and ensure effectiveness of the policies map
PMC11	GBA1 Ditchers Farm, Westthoughton Delete Green Belt Addition GBA1 from the policies map and amend the Green Belt boundary accordingly	To reflect the removal of the Green Belt Addition from the plan and to ensure effectiveness of the policies map
PMC12	GBA2 Horwich Golf Club / Knowles Farm Amend the policies map to amend the Green Belt Addition GBA2 boundary and the Green Belt boundary	To reflect the amended boundary of the Green Belt Addition
PMC13	GBA3 Pigs Lea Brook 1 Delete Green Belt Addition GBA3 from the policies map and amend the Green Belt boundary accordingly	To reflect the removal of the Green Belt Addition from the plan and to ensure effectiveness of the policies map
PMC14	GBA4 North of Nuttall Park Delete Green Belt Addition GBA4 from the policies map and amend the Green Belt boundary accordingly	To reflect the removal of the Green Belt Addition from the plan and to ensure effectiveness of the policies map
PMC15	GBA6 Hollins Brook Delete Green Belt Addition GBA6 from the policies map and amend the Green Belt boundary accordingly	To reflect the removal of the Green Belt Addition from the plan and to ensure effectiveness of the policies map
PMC16	GBA7 Off New Road, Radcliffe Delete Green Belt Addition GBA7 from the policies map and amend the Green Belt boundary accordingly	To reflect the removal of the Green Belt Addition from the plan and to ensure effectiveness of the policies map

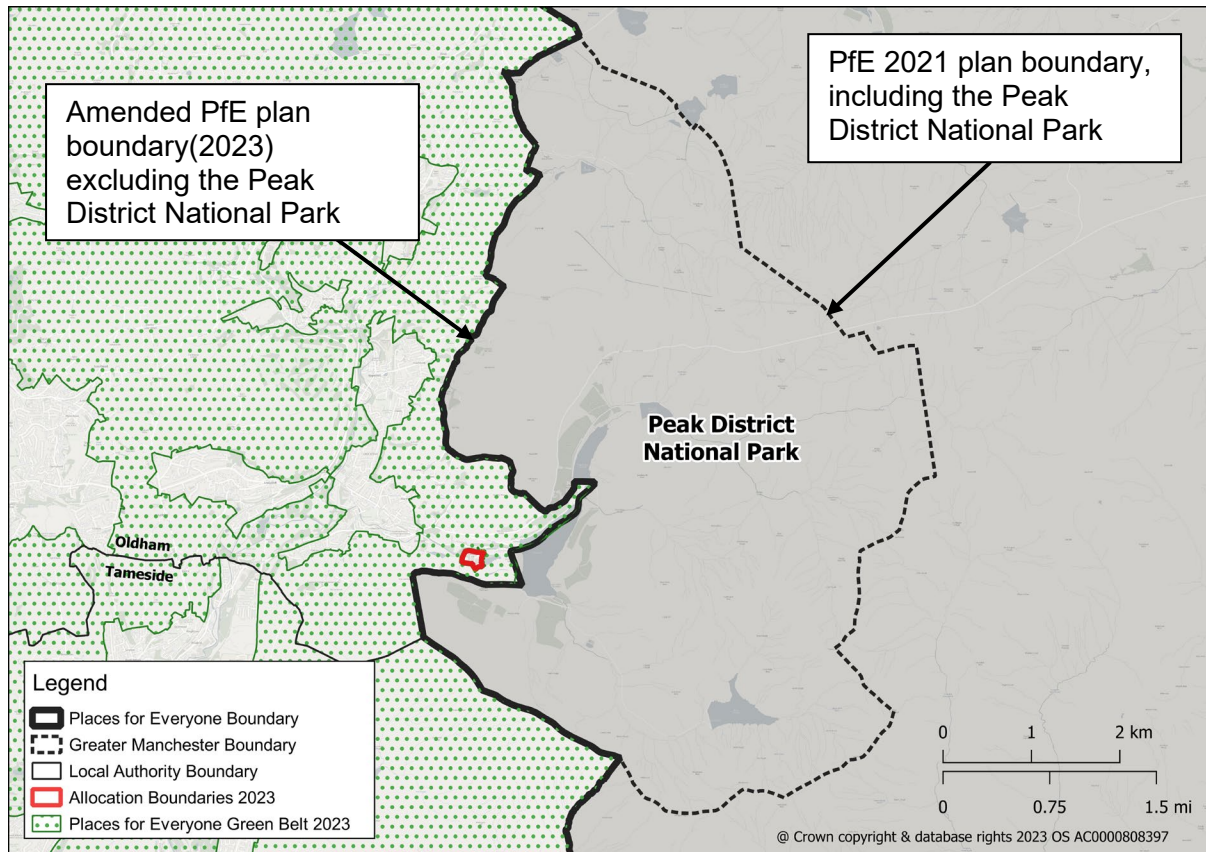
Policy Map Change Ref	Policy Map Change	Reason
PMC17	GBA8 Hollins Brow Delete Green Belt Addition GBA8 from the policies map and amend the Green Belt boundary accordingly	To reflect the removal of the Green Belt Addition from the plan and to ensure effectiveness of the policies map
PMC18	GBA9 Hollybank Street, Radcliffe Delete Green Belt Addition GBA9 from the policies map and amend the Green Belt boundary accordingly	To reflect the removal of the Green Belt Addition from the plan and to ensure effectiveness of the policies map
PMC19	GBA10 Crow Lumb Wood Delete Green Belt Addition GBA10 from the policies map and amend the Green Belt boundary accordingly	To reflect the removal of the Green Belt Addition from the plan and to ensure effectiveness of the policies map
PMC20	GBA11 Nuttall West, Ramsbottom Delete Green Belt Addition GBA11 from the policies map and amend the Green Belt boundary accordingly	To reflect the removal of the Green Belt Addition from the plan and to ensure effectiveness of the policies map
PMC21	GBA13 Nuttall East, Ramsbottom Delete Green Belt Addition GBA13 from the policies map and amend the Green Belt boundary accordingly	To reflect the removal of the Green Belt Addition from the plan and to ensure effectiveness of the policies map
PMC22	GBA15 Broad Hey Wood North Delete Green Belt Addition GBA15 from the policies map and amend the Green Belt boundary accordingly	To reflect the removal of the Green Belt Addition from the plan and to ensure effectiveness of the policies map
PMC23	GBA16 Lower Hinds Delete Green Belt Addition GBA16 from the policies map and amend the Green Belt boundary accordingly	To reflect the removal of the Green Belt Addition from the plan and to ensure effectiveness of the policies map
PMC24	GBA17 Land behind Denshaw Village Hall Delete Green Belt Addition GBA17 from the policies map and amend the Green Belt boundary accordingly	To reflect the removal of the Green Belt Addition from the plan and to ensure effectiveness of the policies map
PMC25	GBA18 Land within the Roch Valley, Smallbridge Delete Green Belt Addition GBA18 from the policies map and amend the Green Belt boundary accordingly	To reflect the removal of the Green Belt Addition from the plan and to ensure effectiveness of the policies map.

Policy Map Change Ref	Policy Map Change	Reason
PMC26	GBA20 Land at Firgrove Playing Fields, Rochdale Delete Green Belt Addition GBA20 from the policies map and amend the Green Belt boundary accordingly	To reflect the removal of the Green Belt Addition from the plan and to ensure effectiveness of the policies map
PMC27	GBA21 Land between railway line and Rochdale Canal, Littleborough Delete Green Belt Addition GBA21 from the policies map and amend the Green Belt boundary accordingly	To reflect the removal of the Green Belt Addition from the plan and to ensure effectiveness of the policies map
PMC28	GBA22 Land north of St Andrew's Church, Dearnley Delete Green Belt Addition GBA22 from the policies map and amend the Green Belt boundary accordingly	To reflect the removal of the Green Belt Addition from the plan and to ensure effectiveness of the policies map
PMC29	GBA23 Land at Townhouse Brook, Littleborough Delete Green Belt Addition GBA23 from the policies map and amend the Green Belt boundary accordingly	To reflect the removal of the Green Belt Addition from the plan and to ensure effectiveness of the policies map
PMC30	GBA24 Land north of Shore, Littleborough Delete Green Belt Addition GBA24 from the policies map and amend the Green Belt boundary accordingly	To reflect the removal of the Green Belt Addition from the plan and to ensure effectiveness of the policies map
PMC31	GBA27 West Salford Greenway Delete Green Belt Addition GBA27 from the policies map and amend the Green Belt boundary accordingly	To reflect the removal of the Green Belt Addition from the plan and to ensure effectiveness of the policies map
PMC32	GBA30 Blackleach Country Park Delete Green Belt Addition GBA30 from the policies map and amend the Green Belt boundary accordingly	To reflect the removal of the Green Belt Addition from the plan and to ensure effectiveness of the policies map
PMC33	GBA33 Ridge Hill Lane, Ridge Hill, Stalybridge Delete Green Belt Addition GBA33 from the policies map and amend the Green Belt boundary accordingly	To reflect the removal of the Green Belt Addition from the plan and to ensure effectiveness of the policies map
PMC34	GBA34 Cowbury Green, Long Row, Carrbrook, Stalybridge Delete Green Belt Addition GBA34 from the policies map and amend the Green Belt boundary accordingly	To reflect the removal of the Green Belt Addition from the plan and to ensure effectiveness of the policies map

Policy Map Change Ref	Policy Map Change	Reason
PMC35	GBA36 Yew Tree Land, Dukinfield Delete Green Belt Addition GBA36 from the policies map and amend the Green Belt boundary accordingly	To reflect the removal of the Green Belt Addition from the plan and to ensure effectiveness of the policies map
PMC36	GBA38 Ardenfield, Haughton Green, Denton Delete Green Belt Addition GBA38 from the policies map and amend the Green Belt boundary accordingly	To reflect the removal of the Green Belt Addition from the plan and to ensure effectiveness of the policies map
PMC37	GBA42 Horses Field, Danebank, Denton Delete Green Belt Addition GBA42 from the policies map and amend the Green Belt boundary accordingly	To reflect the removal of the Green Belt Addition from the plan and to ensure effectiveness of the policies map
PMC38	GBA45 Pennington FC Pitches, Howe Bridge, Atherton Delete Green Belt Addition GBA45 from the policies map and amend the Green Belt boundary accordingly	To reflect the removal of the Green Belt Addition from the plan and to ensure effectiveness of the policies map
PMC39	GBA46 Hope Carr Nature Reserve, Leigh Delete Green Belt Addition GBA46 from the policies map and amend the Green Belt boundary accordingly	To reflect the removal of the Green Belt Addition from the plan and to ensure effectiveness of the policies map
PMC40	GBA47 Crow Orchard Road, Standish Delete Green Belt Addition GBA47 from the policies map and amend the Green Belt boundary accordingly	To reflect the removal of the Green Belt Addition from the plan and to ensure effectiveness of the policies map
PMC41	GBA48 North Bradley Lane, Standish Delete Green Belt Addition GBA48 from the policies map and amend the Green Belt boundary accordingly	To reflect the removal of the Green Belt Addition from the plan and to ensure effectiveness of the policies map
PMC42	GBA49 Coppull Lane, Wigan Delete Green Belt Addition GBA49 from the policies map and amend the Green Belt boundary accordingly	To reflect the removal of the Green Belt Addition from the plan and to ensure effectiveness of the policies map

Map PMC1

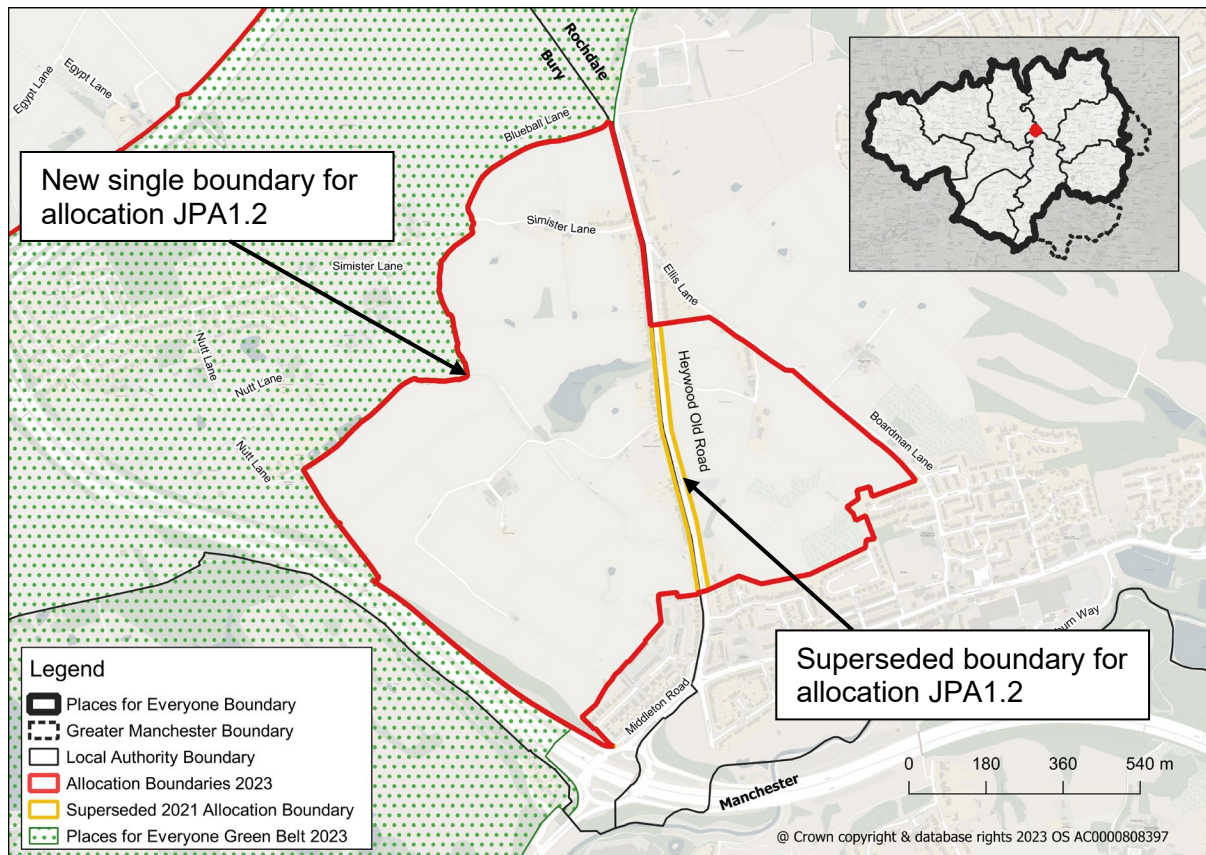
Amend the Policies Map to make it clear that the area of Peak District National Park, lying within Oldham, is excluded from the jurisdiction of the PfE Plan, no consequential changes have been made to the Green Belt boundary.



Map PMC2

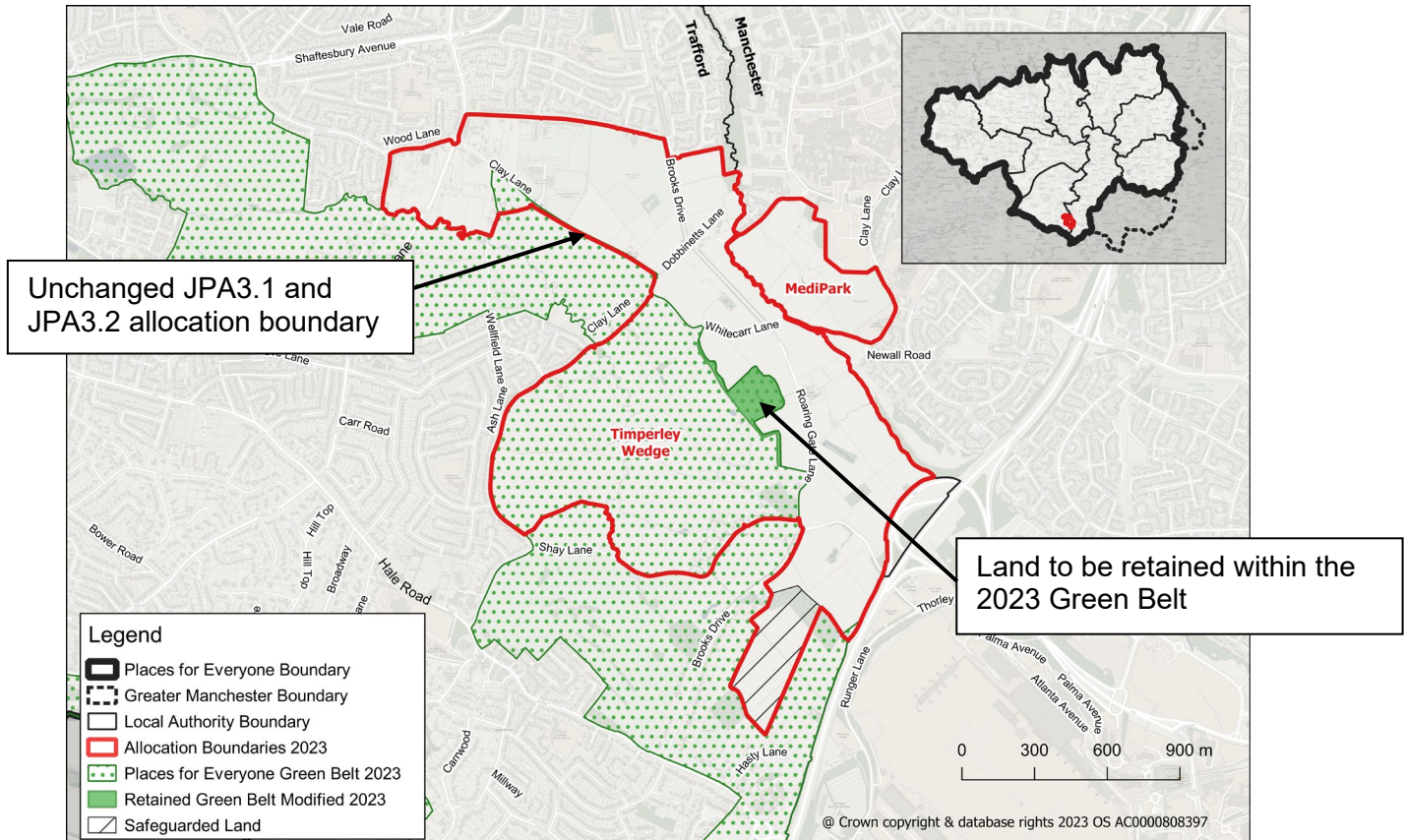
JPA1.2 – Northern Gateway Simister and Bowlee

Amend the policies map to show a single allocation boundary



Map PMC3

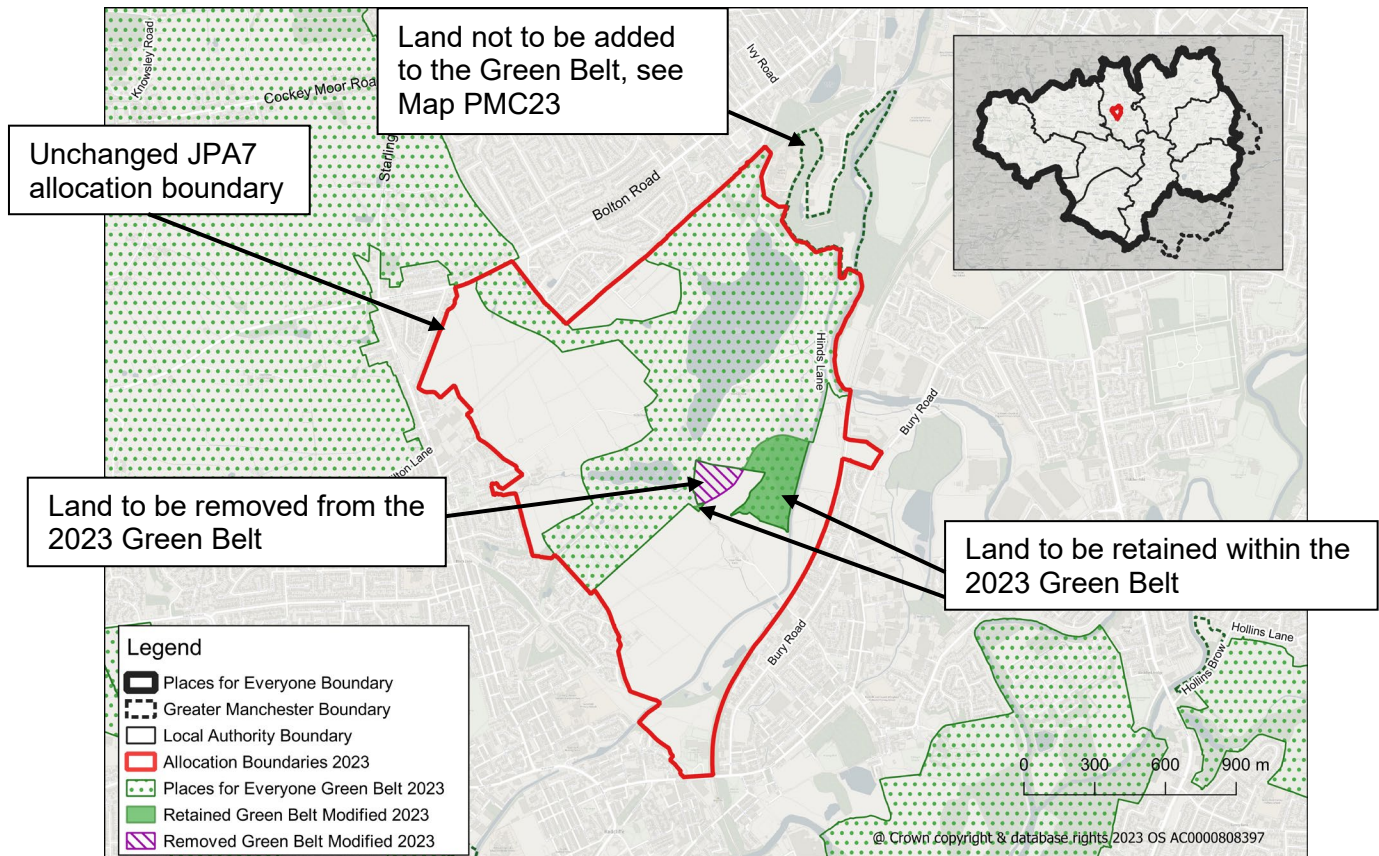
JPA3.2 - Amend the proposed Green Belt boundary on the policies map to retain an SBI in the Green Belt in JPA3.2



Map PMC4

JPA7 – Elton Reservoir

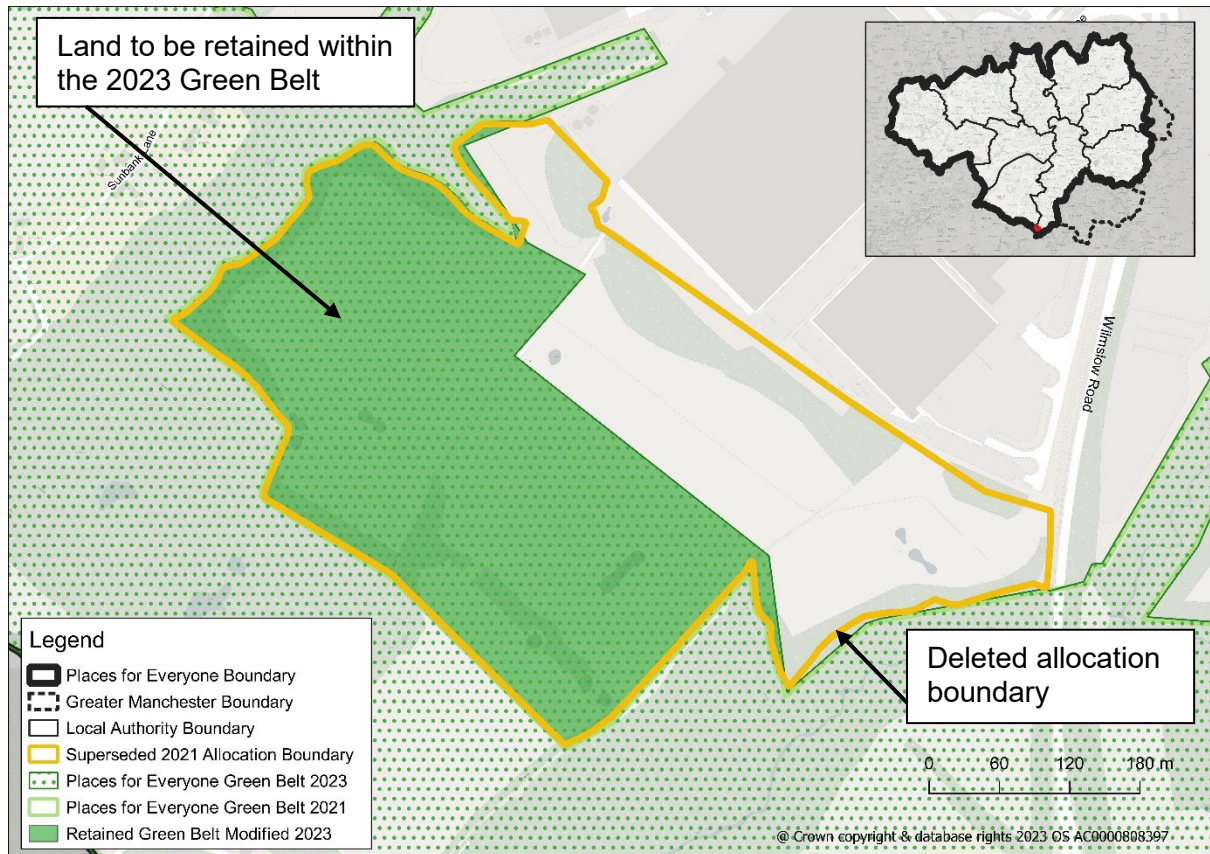
Amend the policies map to reflect proposed change to the boundary of the retained Green Belt within allocation JPA7



Map PMC5

JPA10 – Global Logistics.

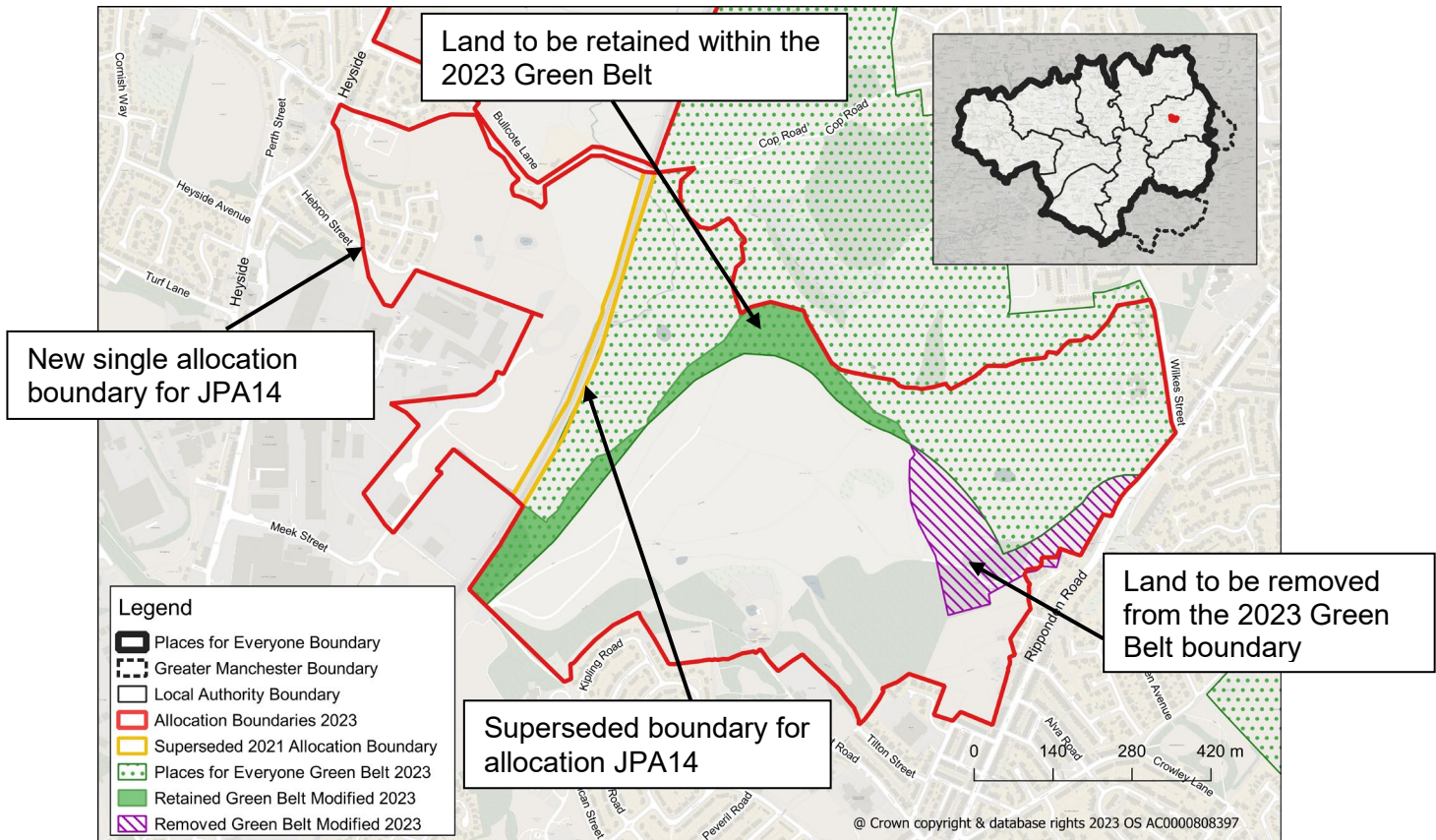
Amend the policies map to delete allocation JPA10 and revert the Green Belt boundary to that currently adopted



Map PMC6

JPA14 – Broadbent Moss

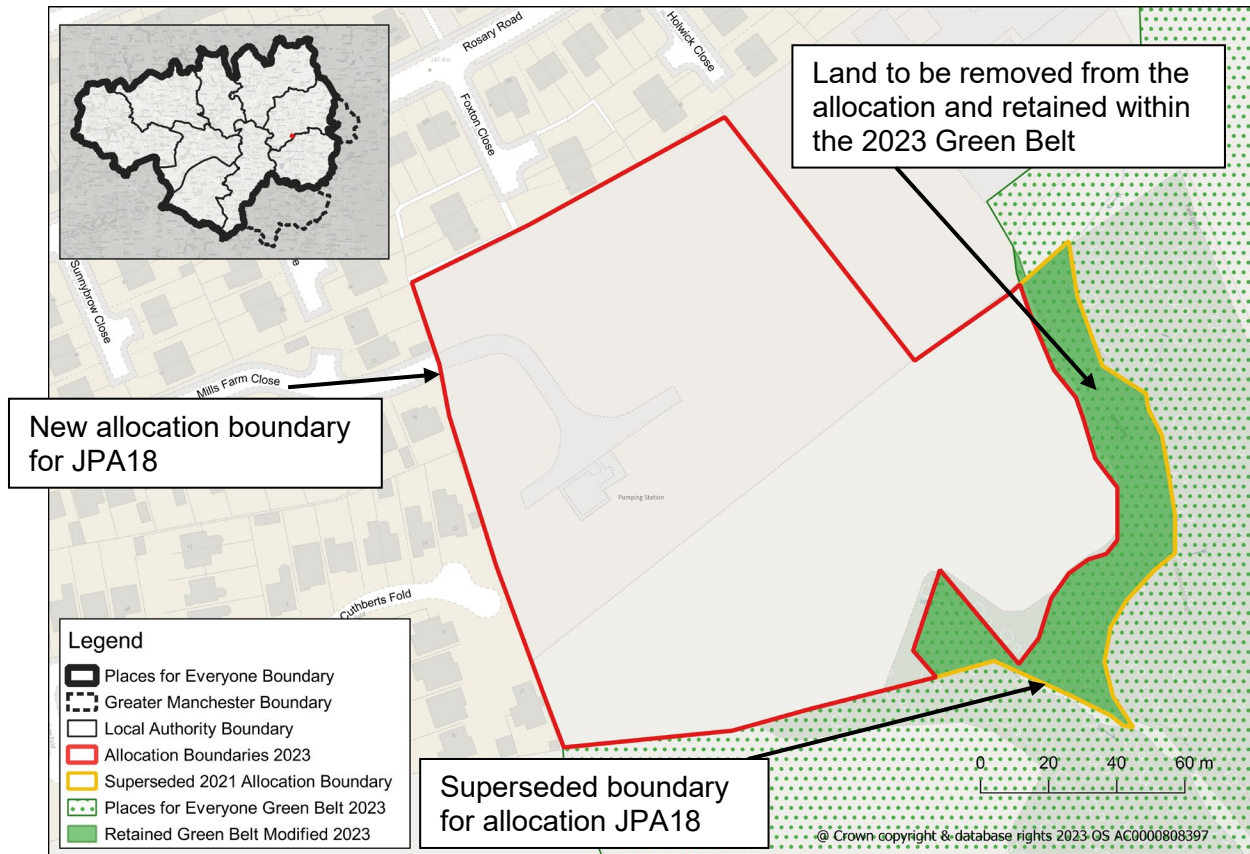
Amend the policies map to reflect proposed change to the boundary of the Green Belt



Map PMC7

JPA18 – Land at Rosary Road

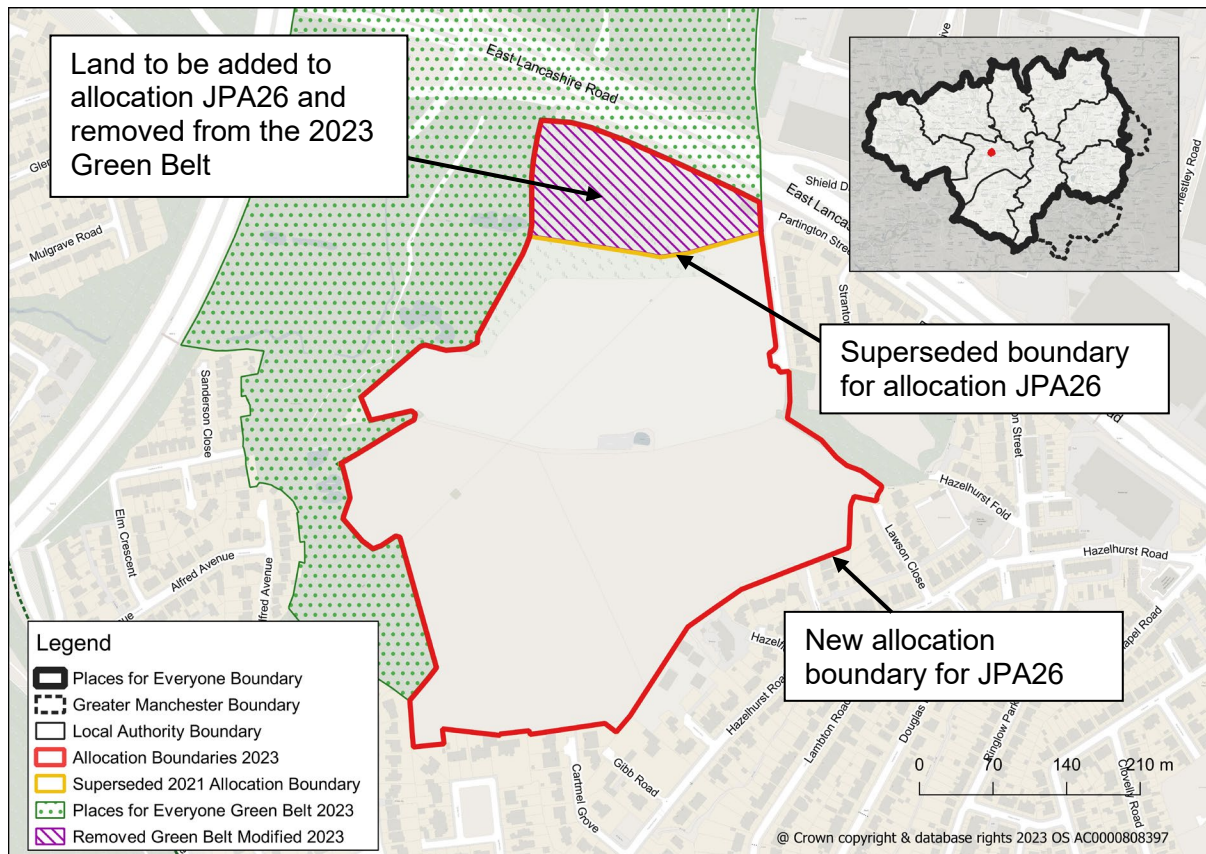
Amend the policies map to reflect proposed change to the boundary of the Green Belt



Map PMC8

JPA26 – Land at Hazelhurst Farm, Salford

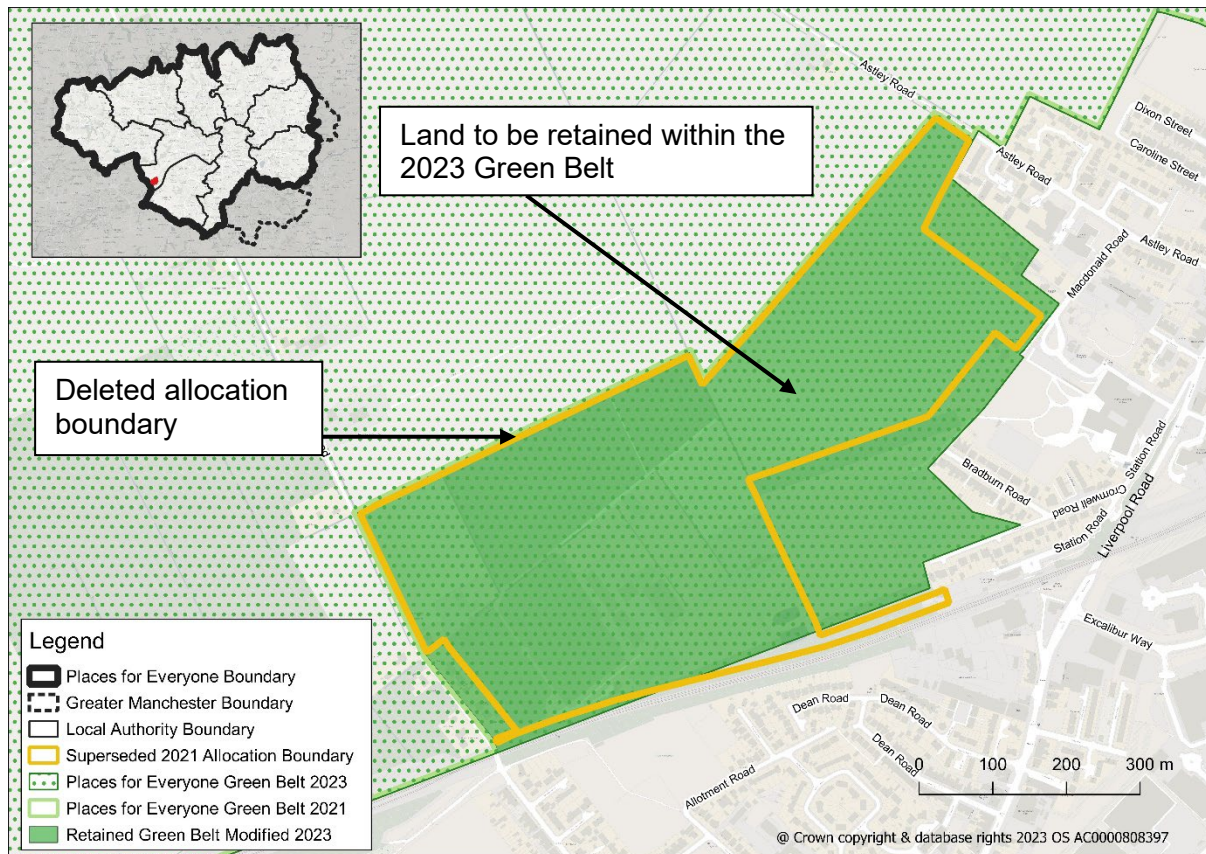
Amend the policies map to reflect proposed change to the allocation and Green Belt boundaries



Map PMC9

JPA28 – North of Irlam Station

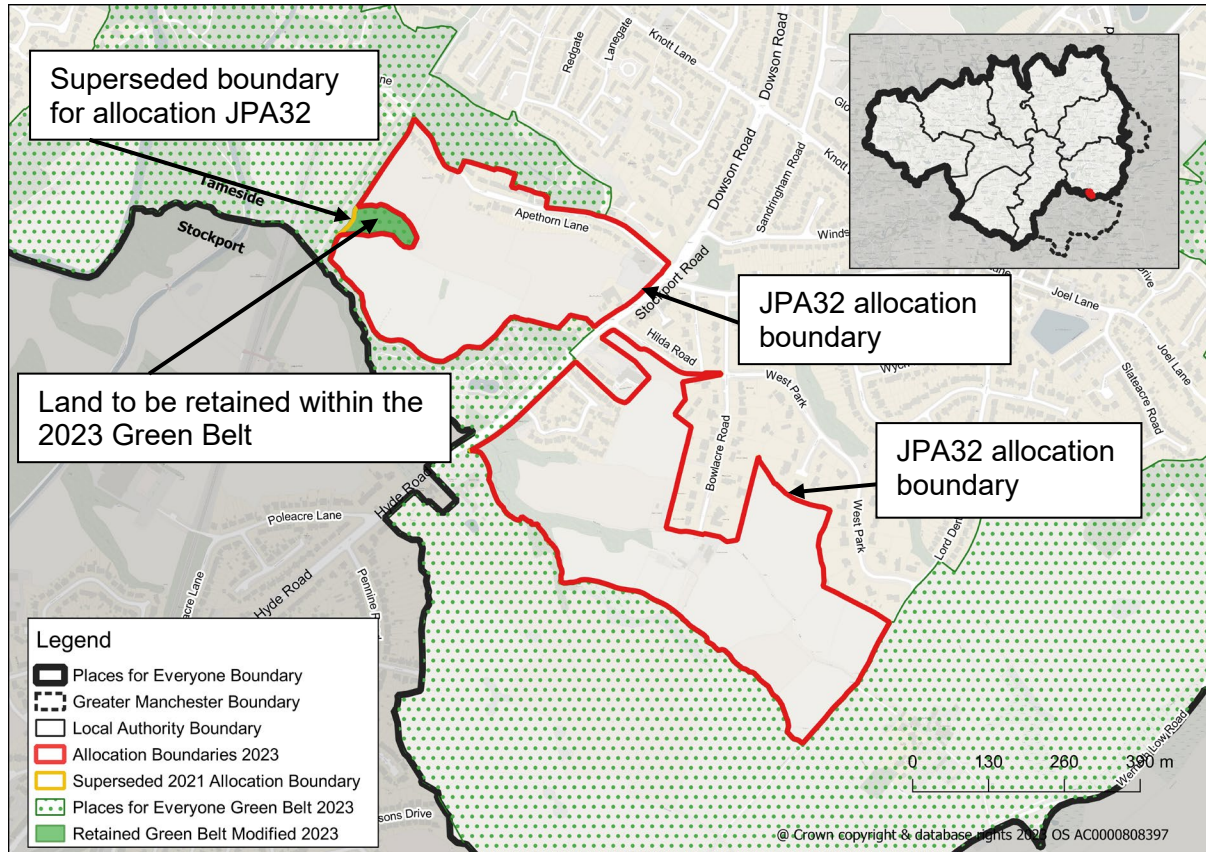
Amend the policies map to delete allocation JPA28 and revert the Green Belt boundary to that currently adopted



Map PMC10

JPA32 – South of Hyde, Tameside

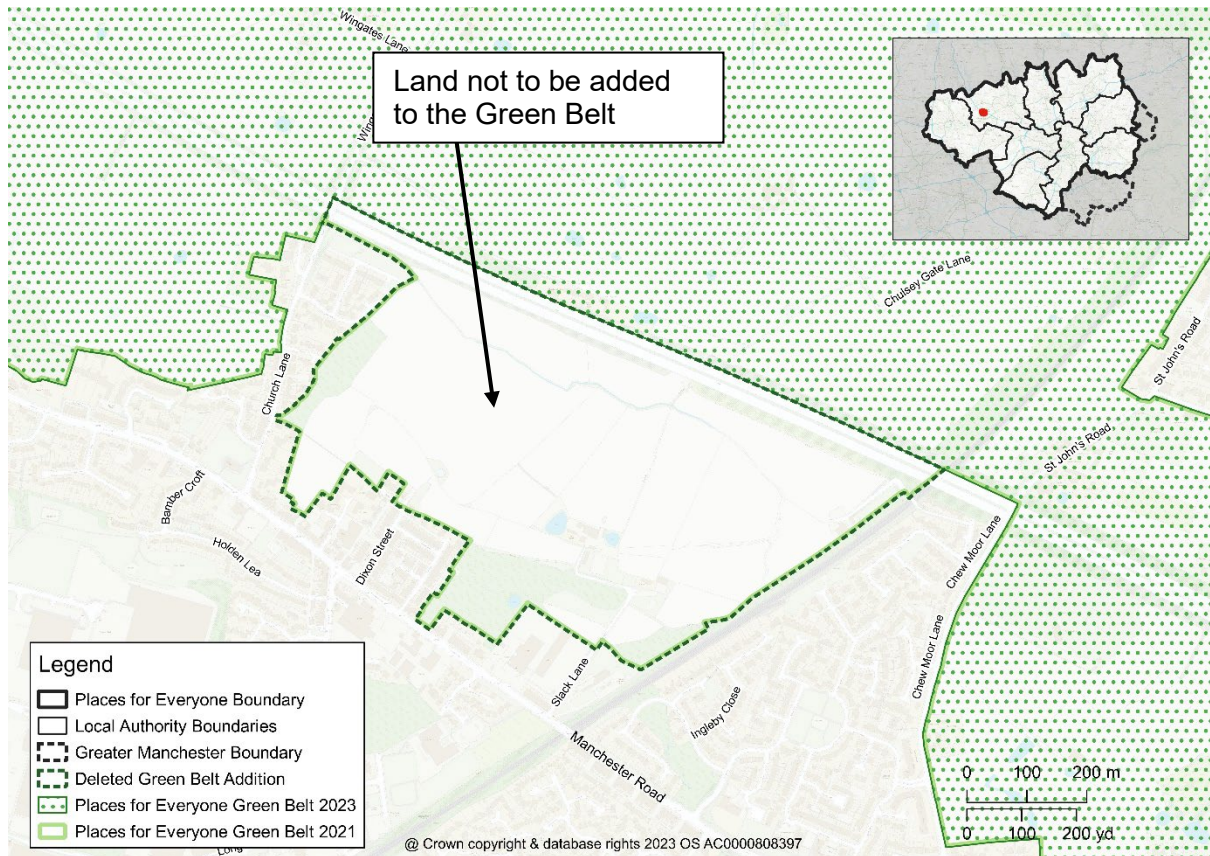
Amend the policies map to reflect proposed change to the allocation and Green Belt boundaries



Map PMC11

GBA1 Ditchers Farm, Westhoughton

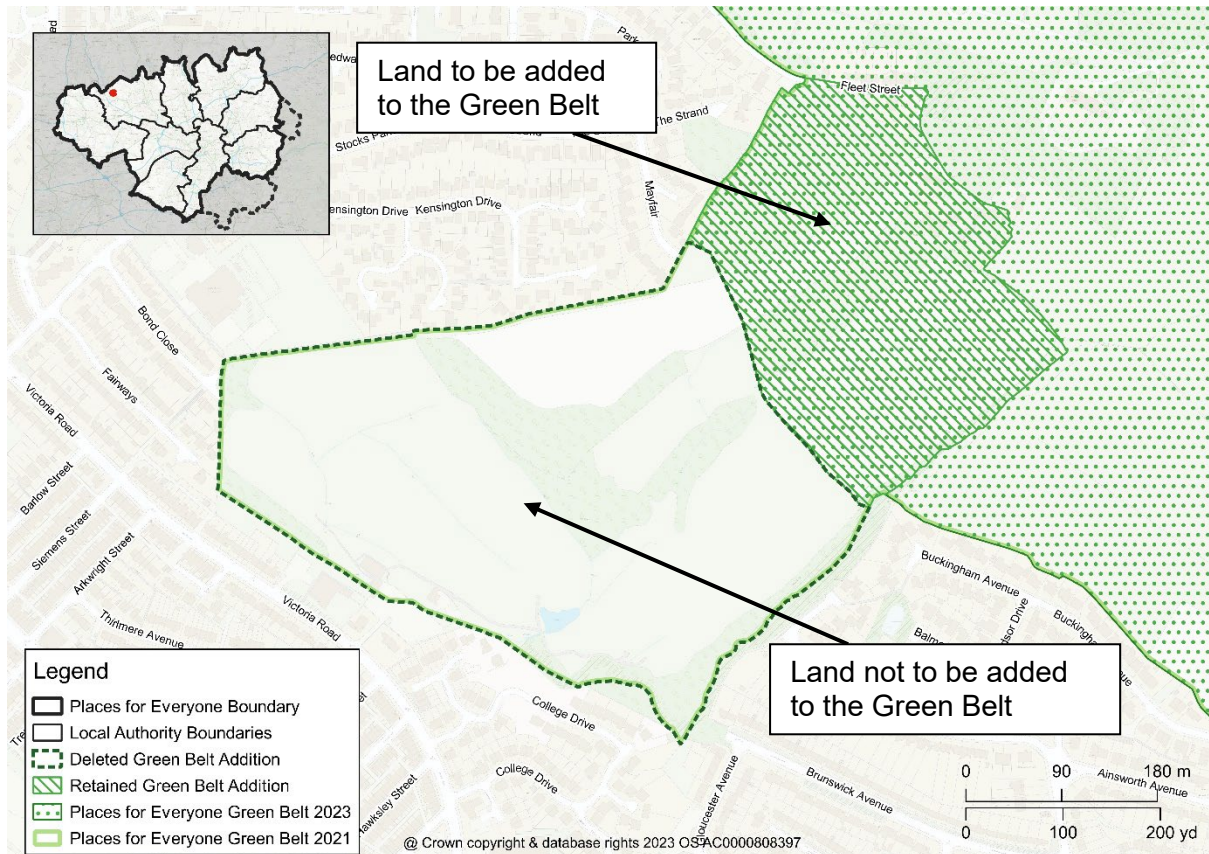
Delete Green Belt Addition GBA1 from the policies map and amend the Green Belt boundary accordingly



Map PMC12

GBA2 Horwich Golf Club / Knowles Farm

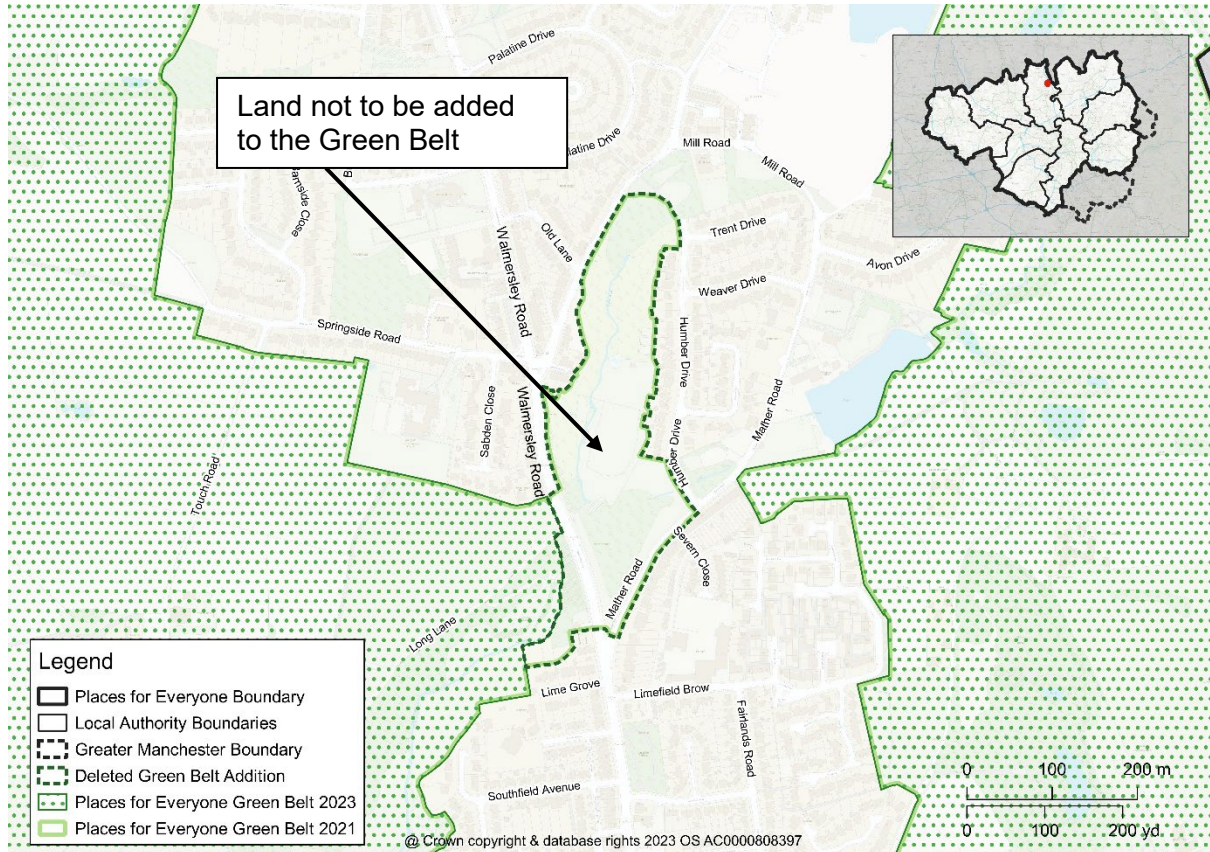
Amend the policies map to amend the Green Belt Addition GBA2 boundary and the Green Belt boundary



Map PMC13

GBA3 Pigs Lea Brook 1

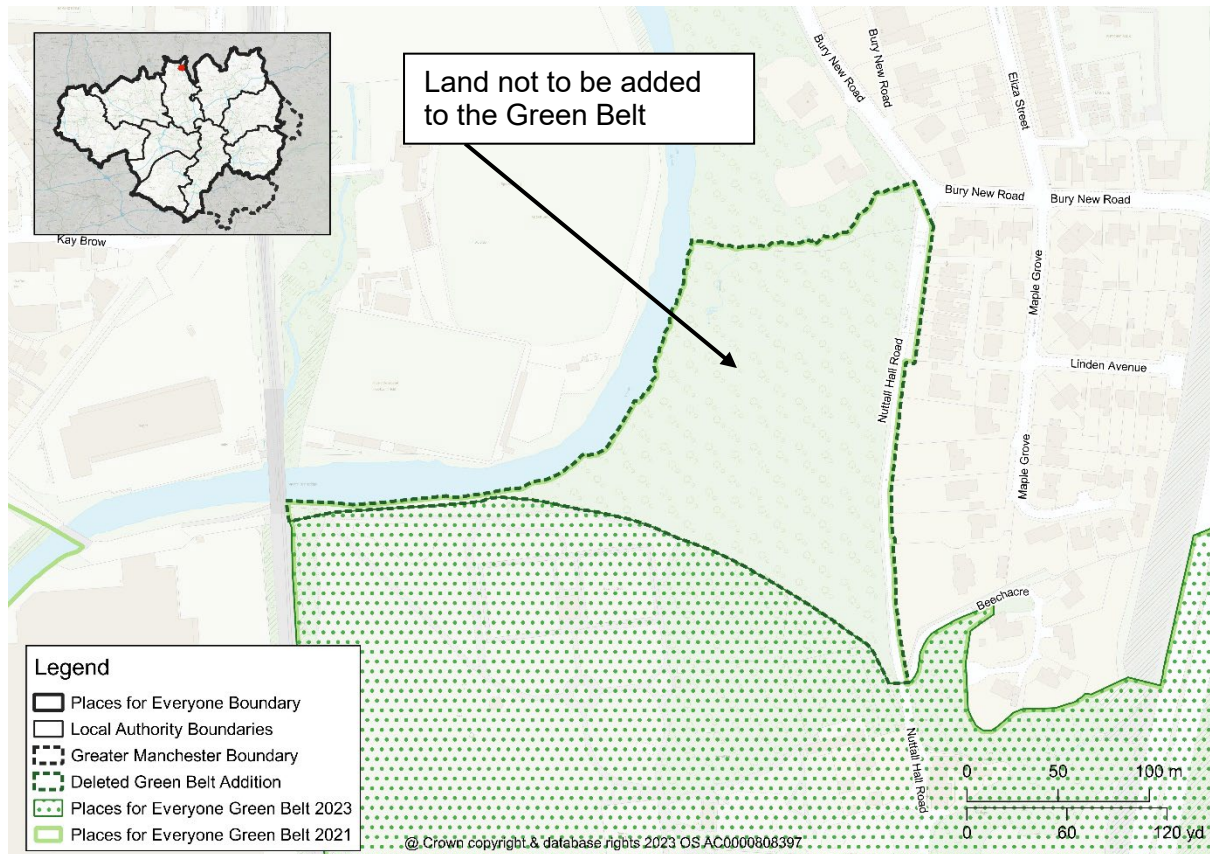
Delete Green Belt Addition GBA3 from the policies map and amend the Green Belt boundary accordingly



Map PMC14

GBA4 North of Nuttall Park

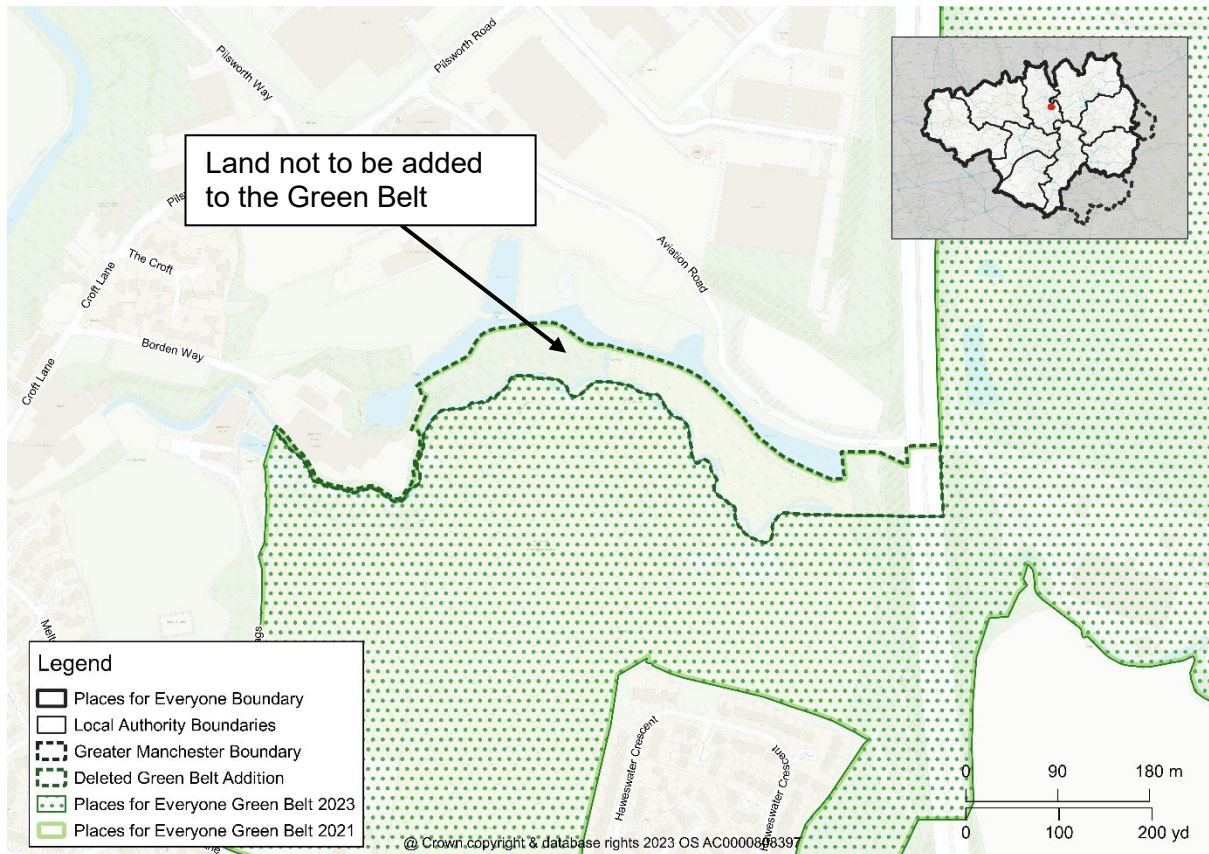
Delete Green Belt Addition GBA4 from the policies map and amend the Green Belt boundary accordingly



Map PMC15

GBA6 Hollins Brook

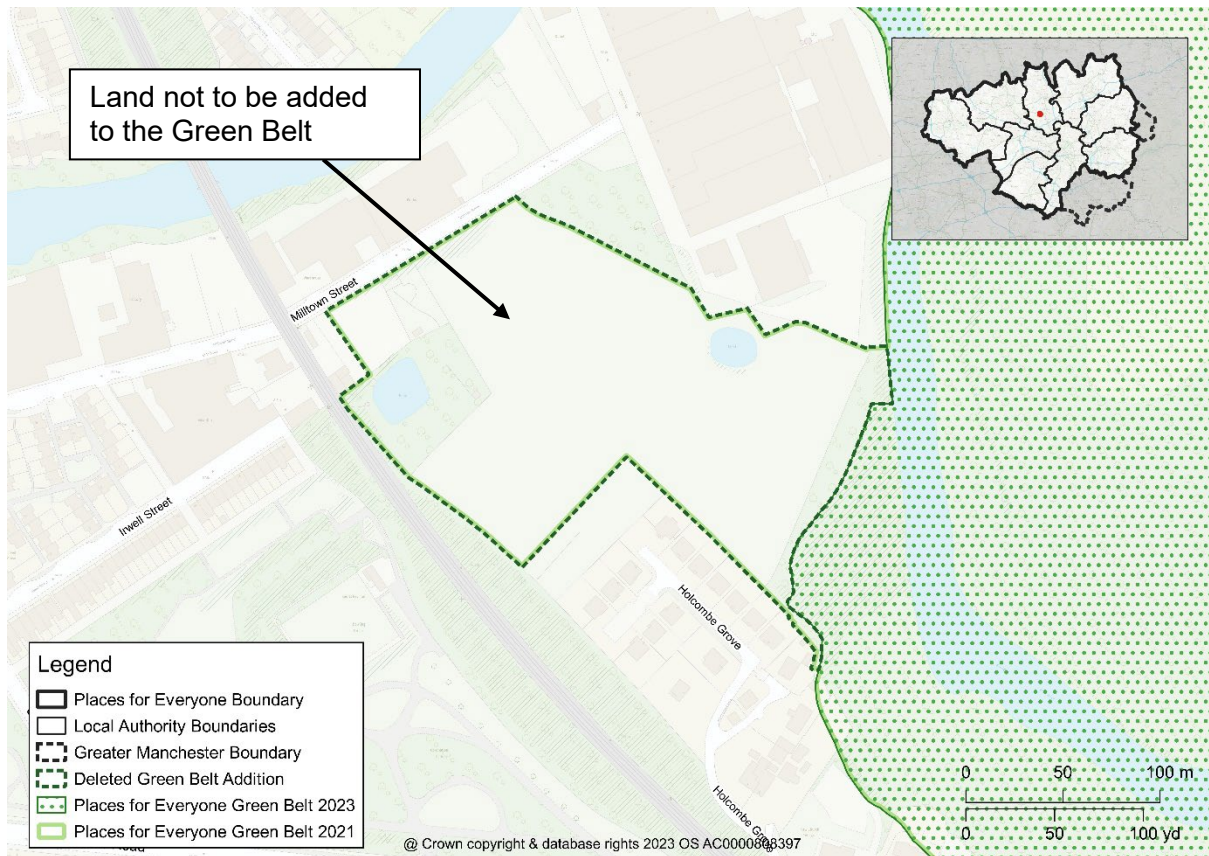
Delete Green Belt Addition GBA6 from the policies map and amend the Green Belt boundary accordingly



Map PMC16

GBA7 Off New Road, Radcliffe

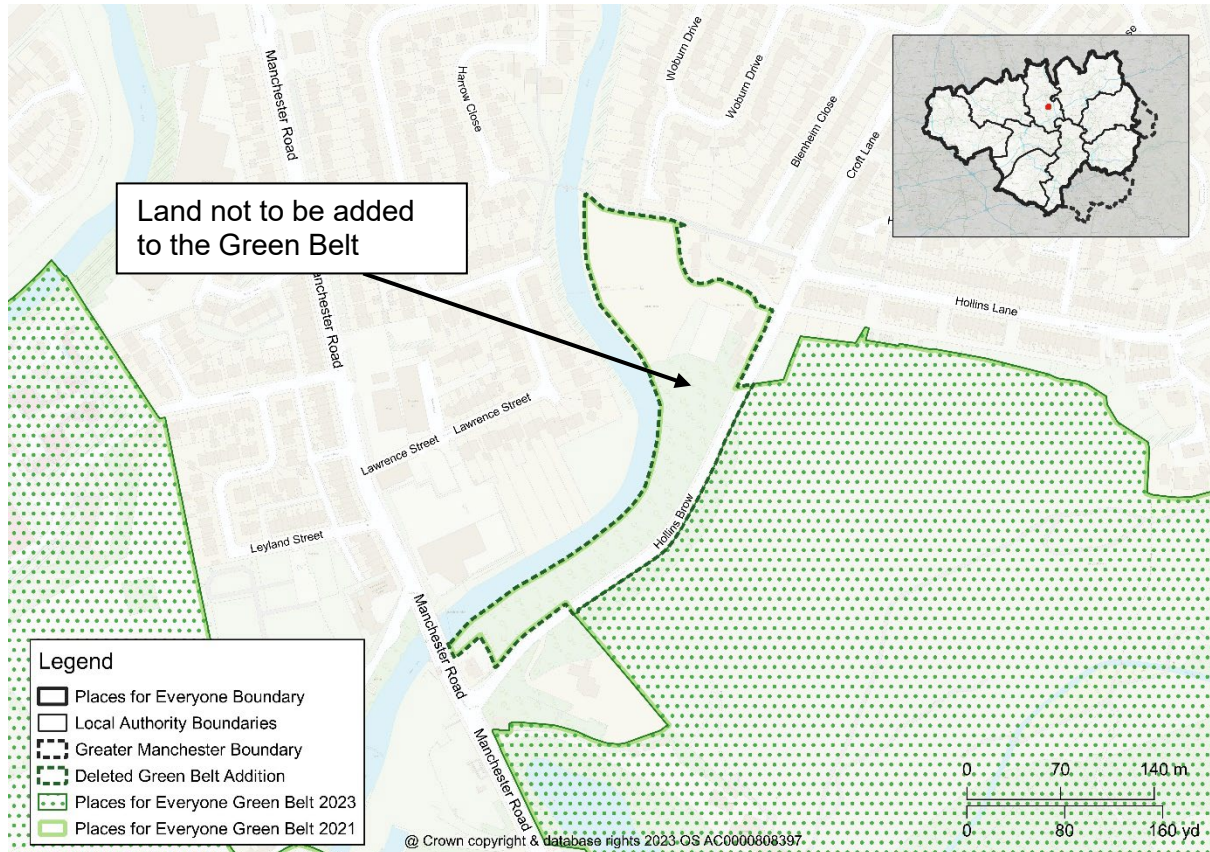
Delete Green Belt Addition GBA7 from the policies map and amend the Green Belt boundary accordingly



Map PMC17

GBA8 Hollins Brow

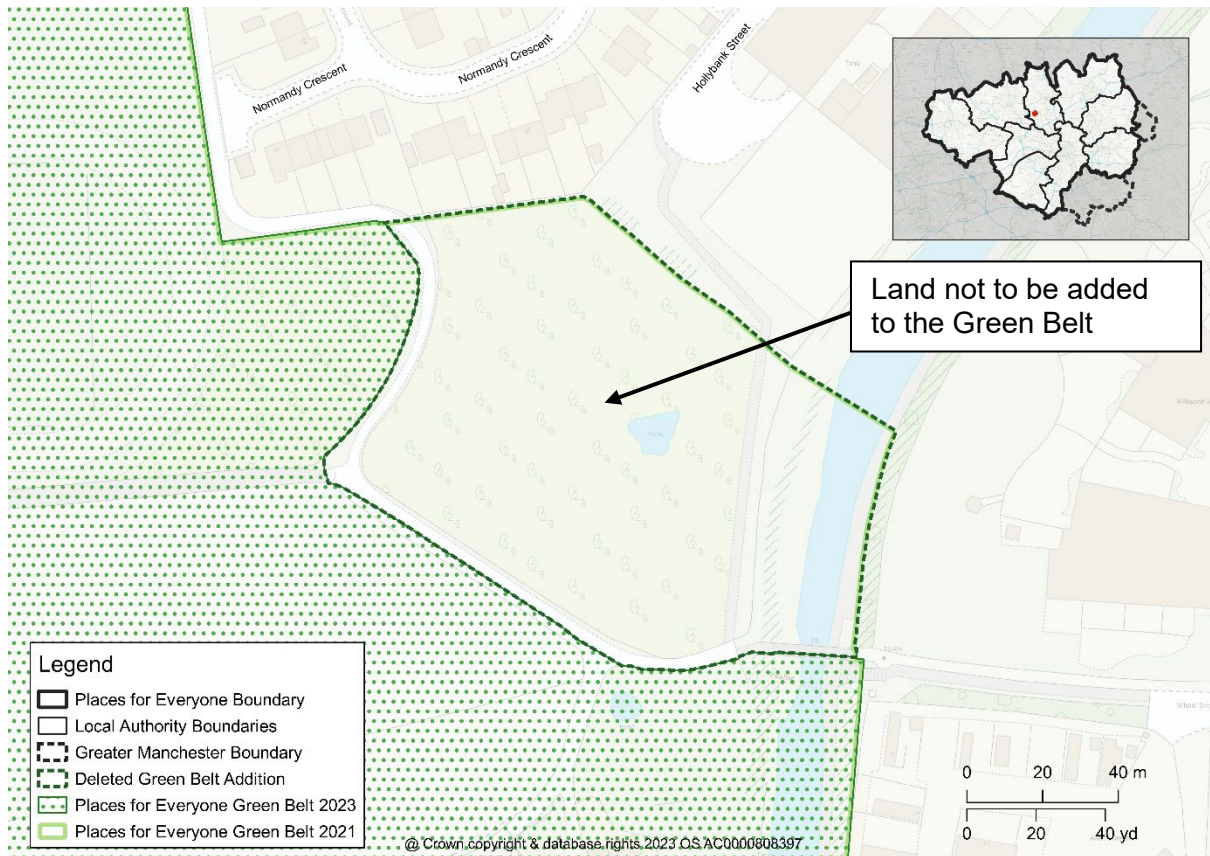
Delete Green Belt Addition GBA8 from the policies map and amend the Green Belt boundary accordingly



Map PMC18

GBA9 Hollybank Street, Radcliffe

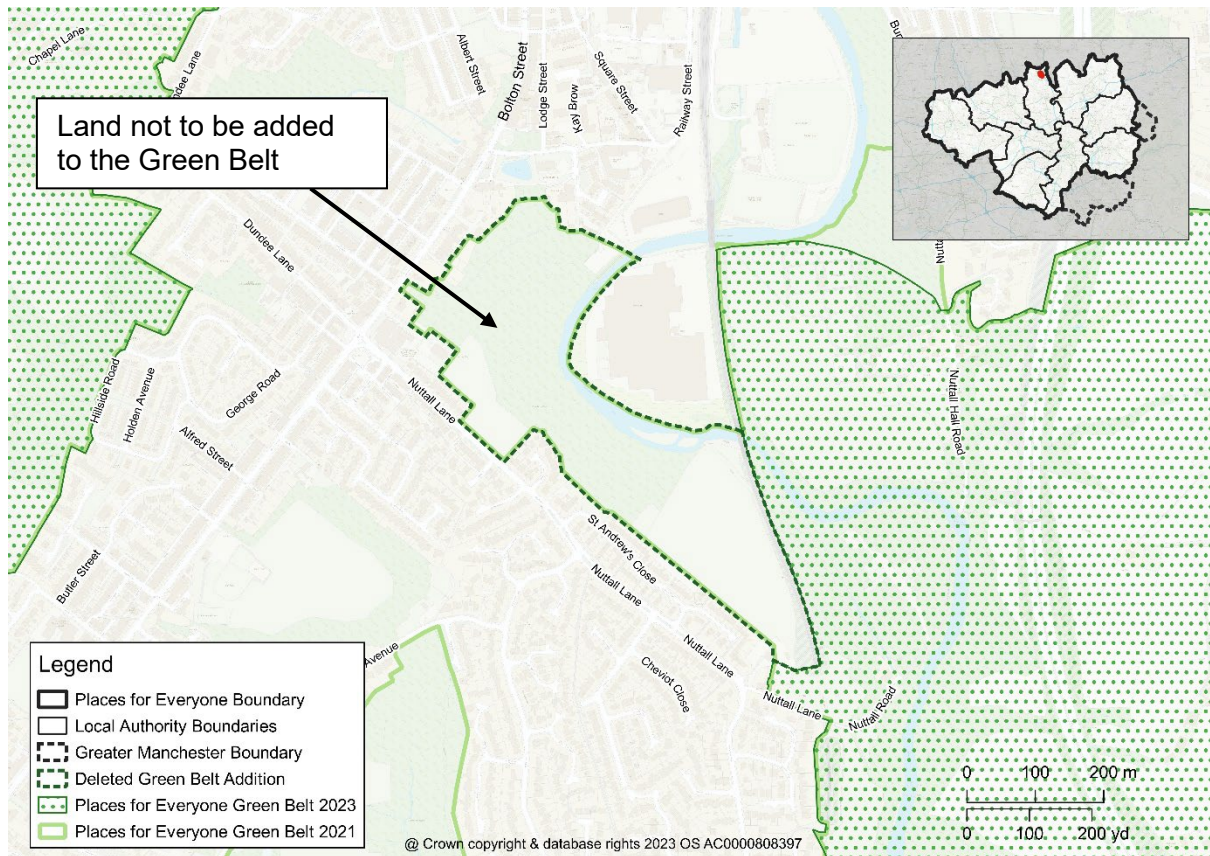
Delete Green Belt Addition GBA9 from the policies map and amend the Green Belt boundary accordingly



Map PMC19

GBA10 Crow Lumb Wood

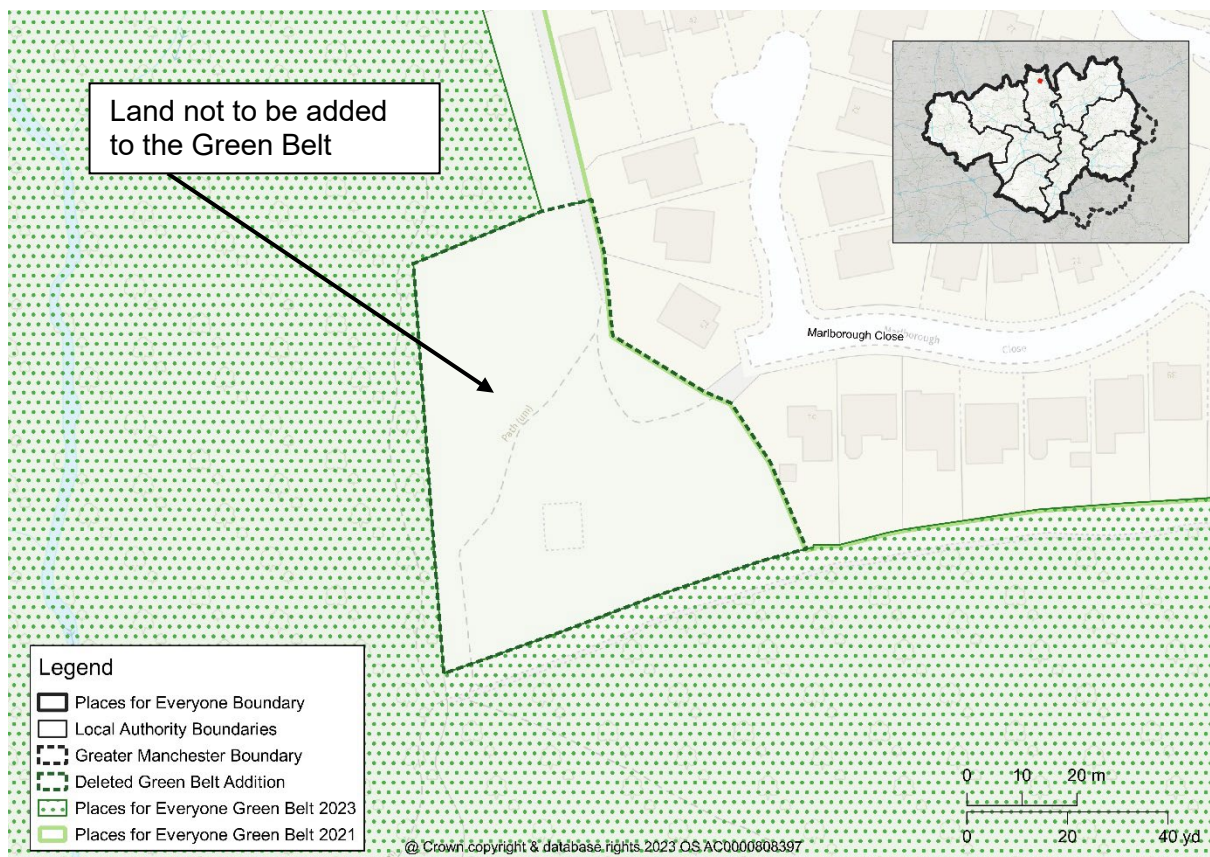
Delete Green Belt Addition GBA10 from the policies map and amend the Green Belt boundary accordingly



Map PMC20

GBA11 Nuttall West, Ramsbottom

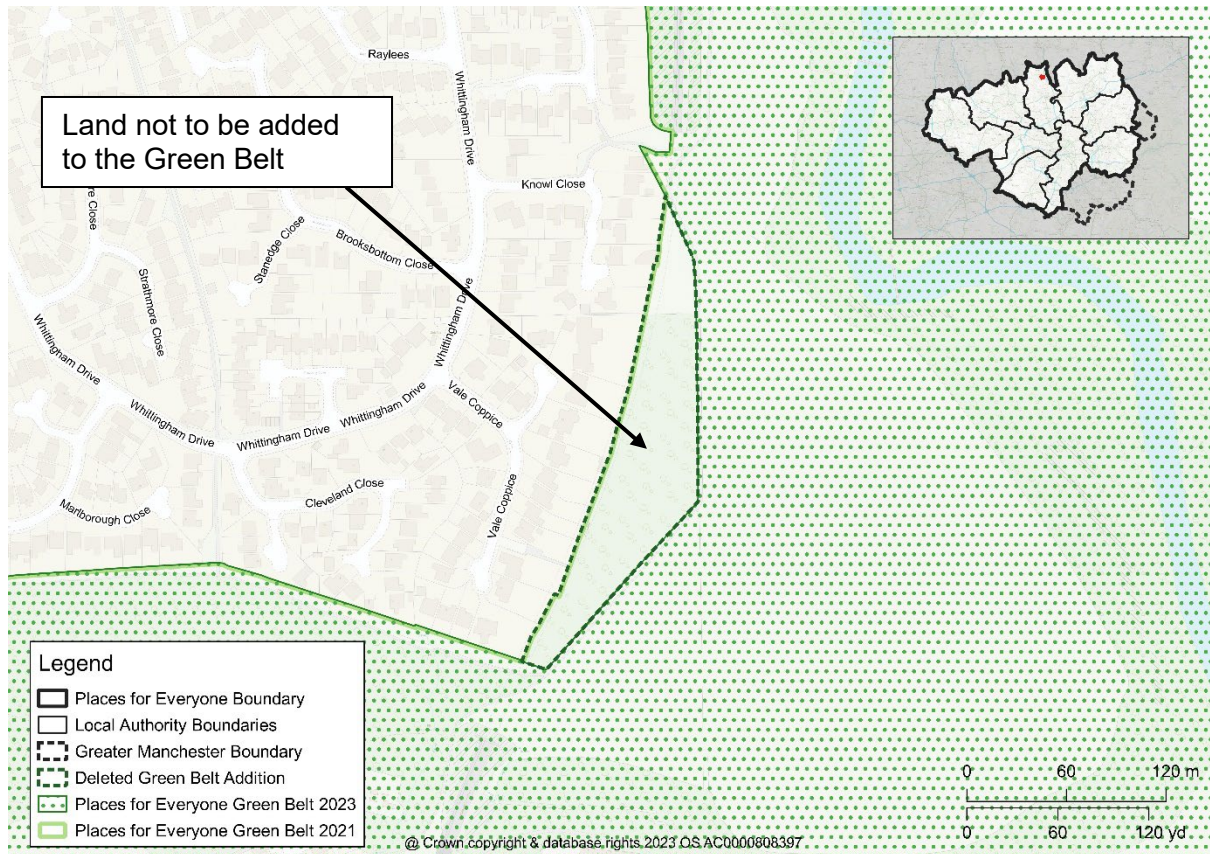
Delete Green Belt Addition GBA11 from the policies map and amend the Green Belt boundary accordingly



Map PMC21

GBA13 Nuttall East, Ramsbottom

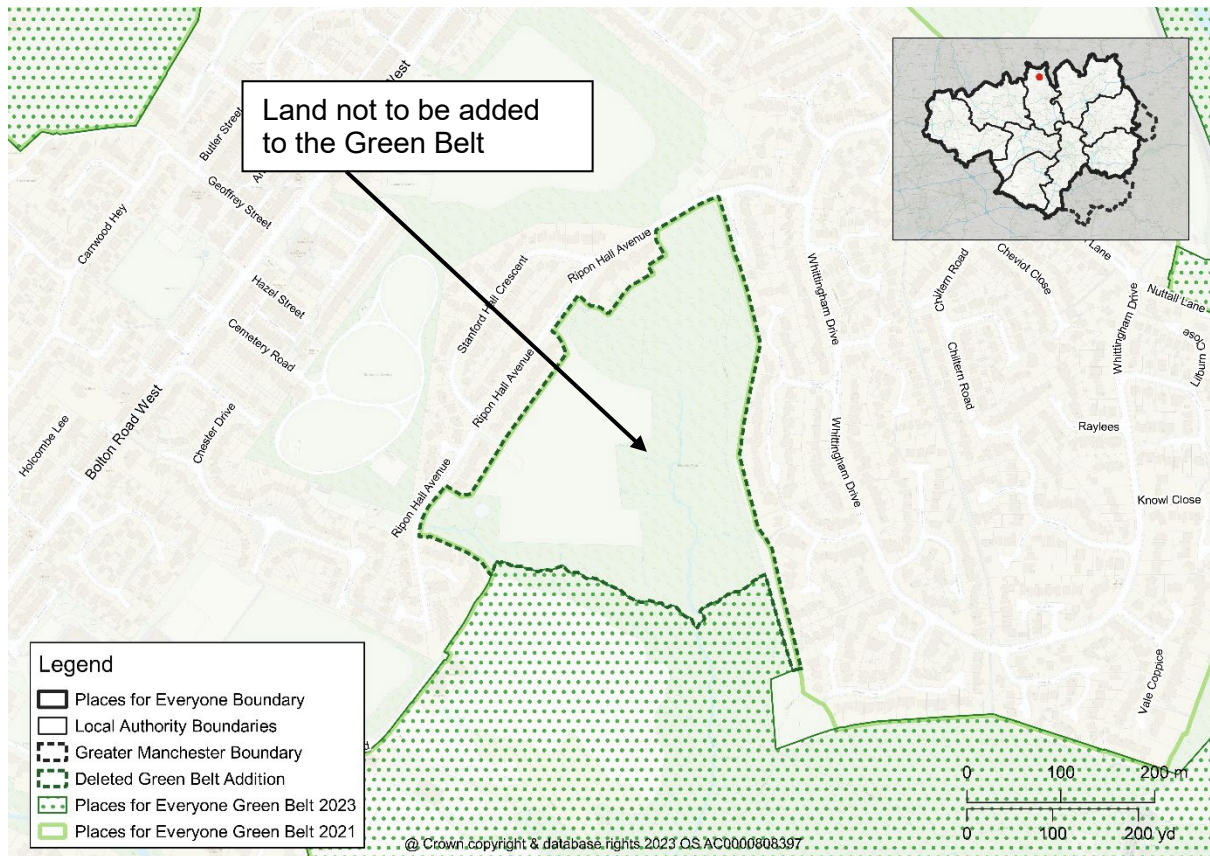
Delete Green Belt Addition GBA13 from the policies map and amend the Green Belt boundary accordingly



Map PMC22

GBA15 Broad Hey Wood North

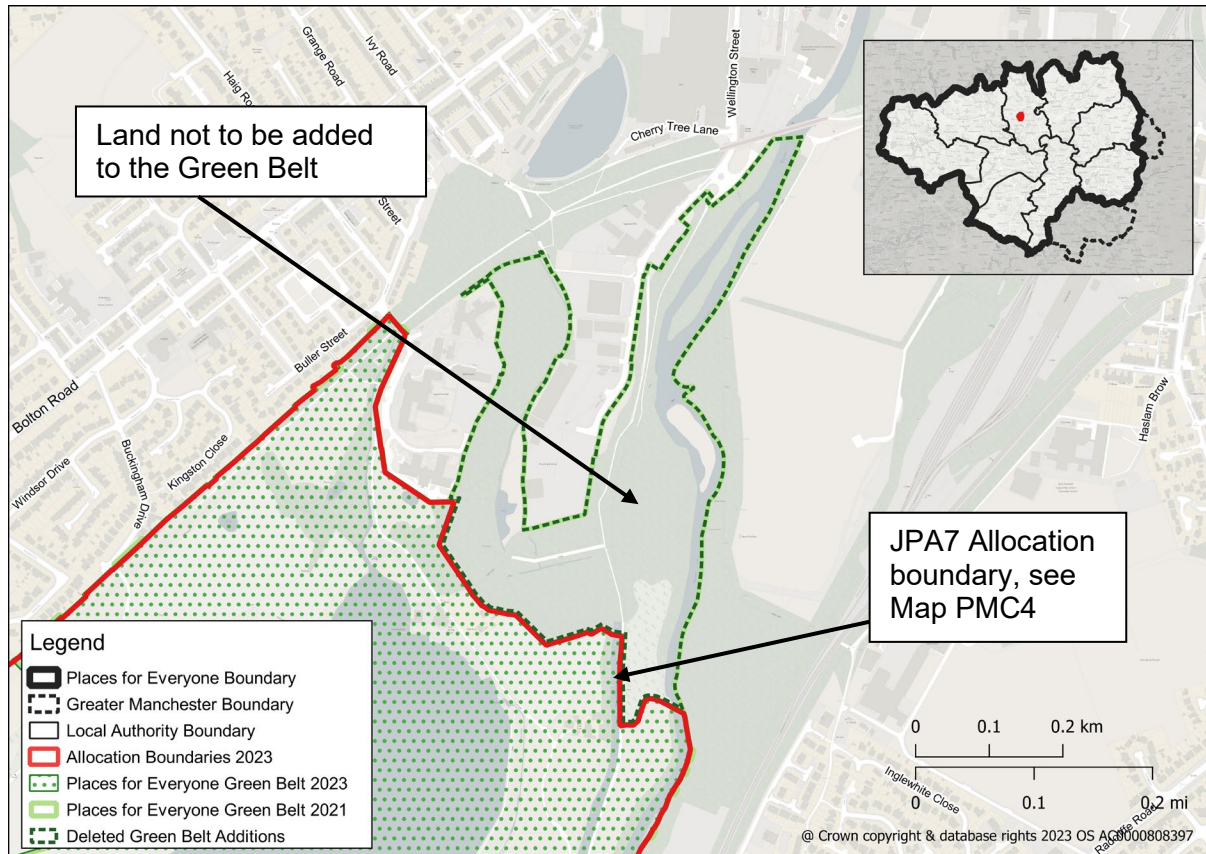
Delete Green Belt Addition GBA15 from the policies map and amend the Green Belt boundary accordingly



Map PMC23

GBA16 Lower Hinds

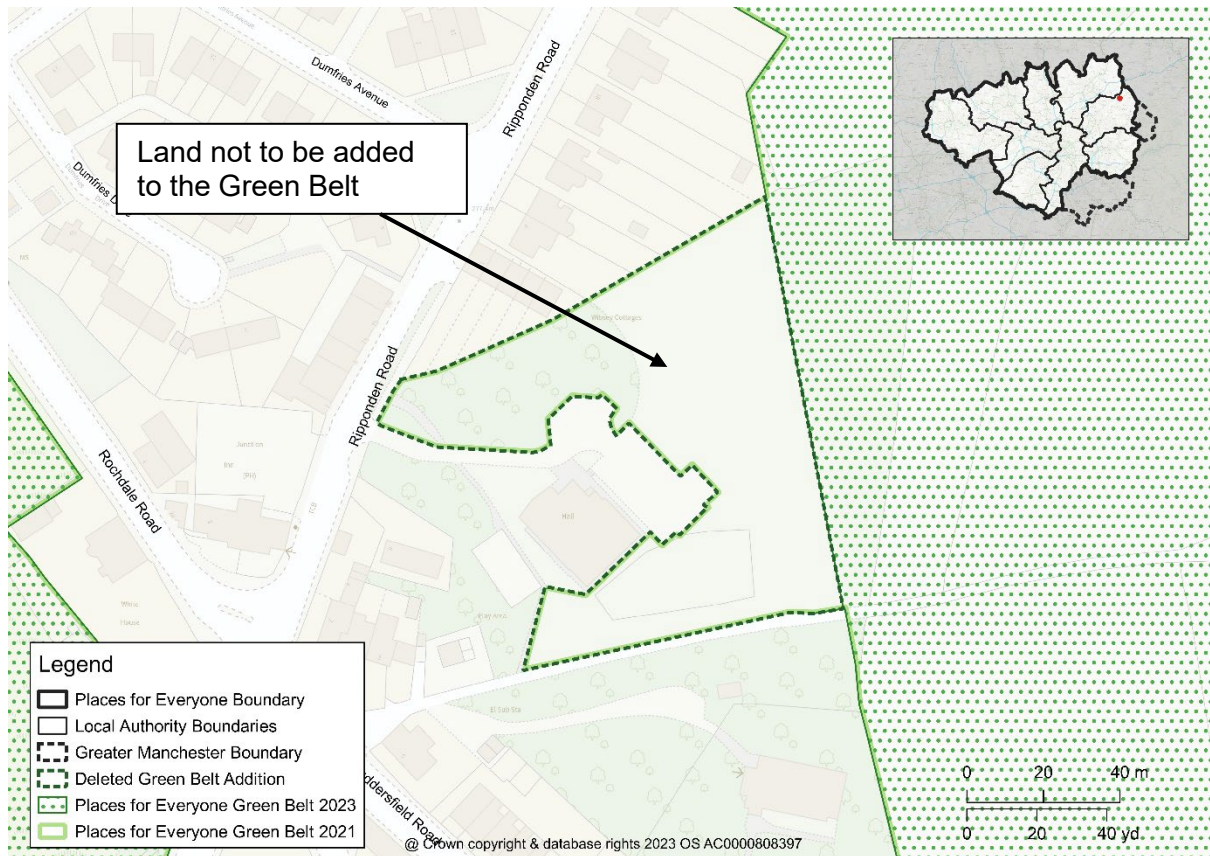
Delete Green Belt Addition GBA16 from the policies map and amend the Green Belt boundary accordingly



Map PMC24

GBA17 Land behind Denshaw Village Hall

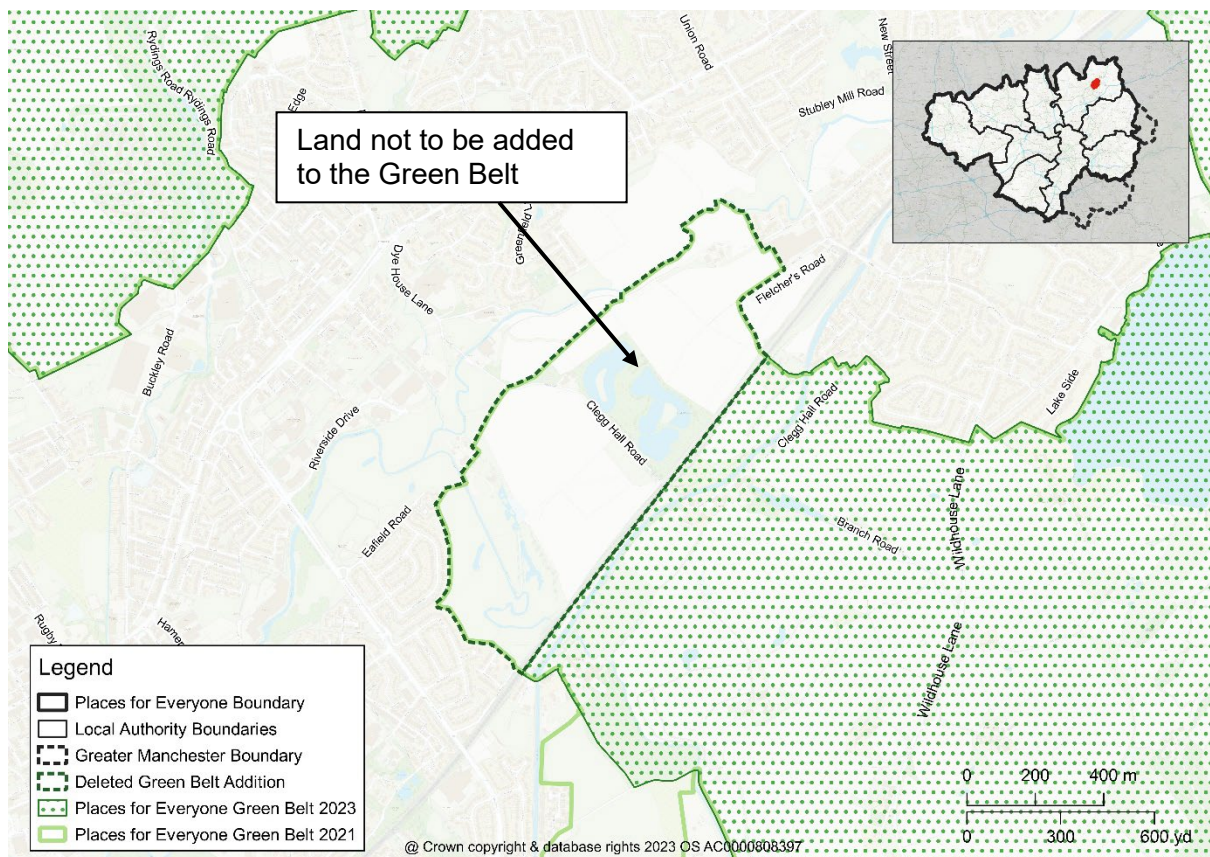
Delete Green Belt Addition GBA17 from the policies map and amend the Green Belt boundary accordingly



Map PMC25

GBA18 Land within the Roch Valley, Smallbridge

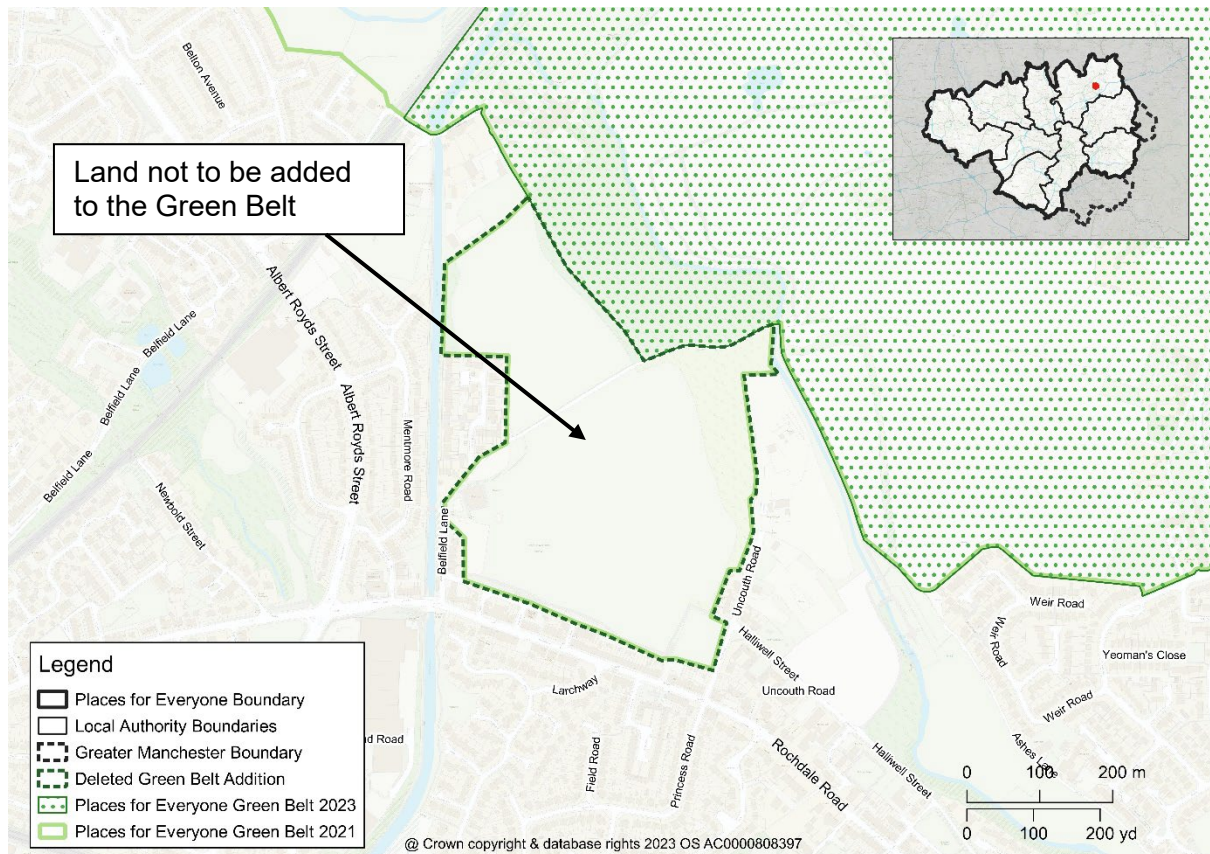
Delete Green Belt Addition GBA18 from the policies map and amend the Green Belt boundary accordingly



Map PMC26

GBA20 Land at Firgrove Playing Fields, Rochdale

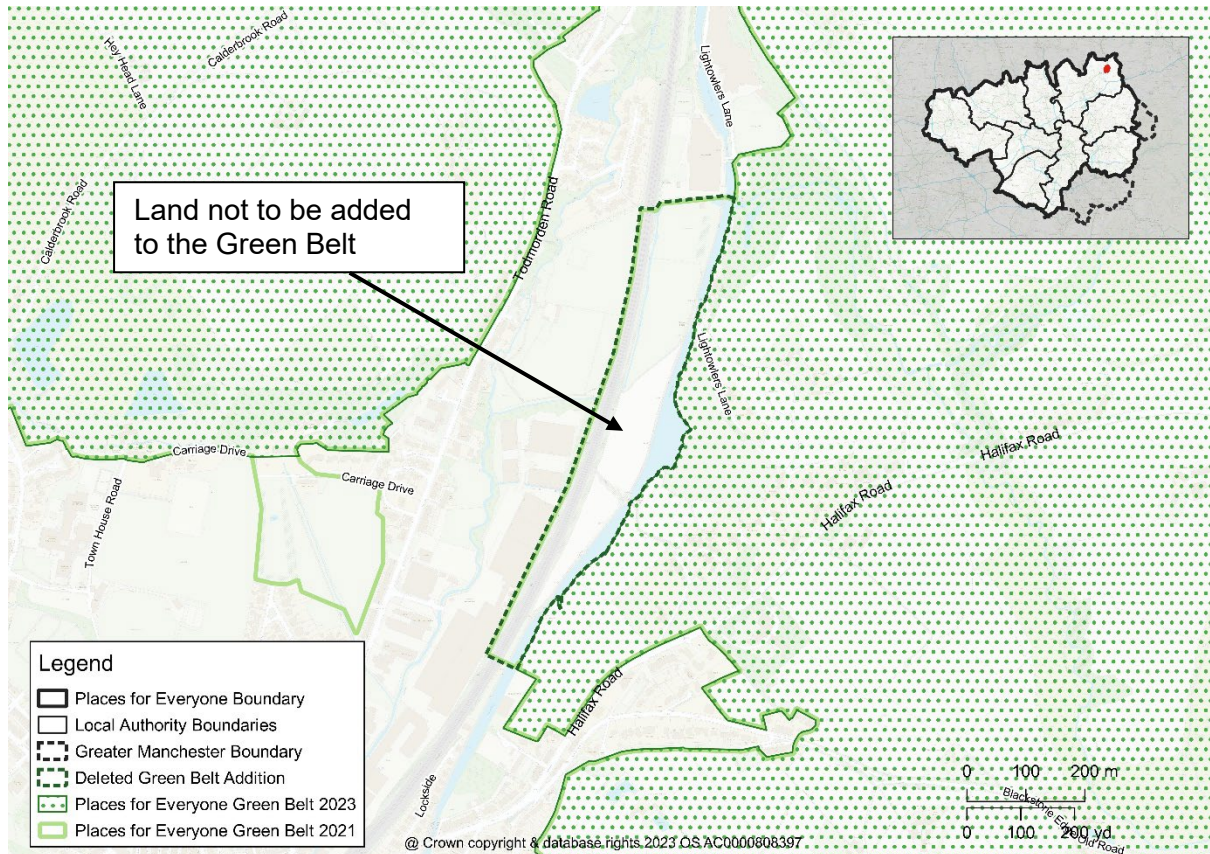
Delete Green Belt Addition GBA20 from the policies map and amend the Green Belt boundary accordingly



Map PMC27

GBA21 Land between railway line and Rochdale Canal, Littleborough

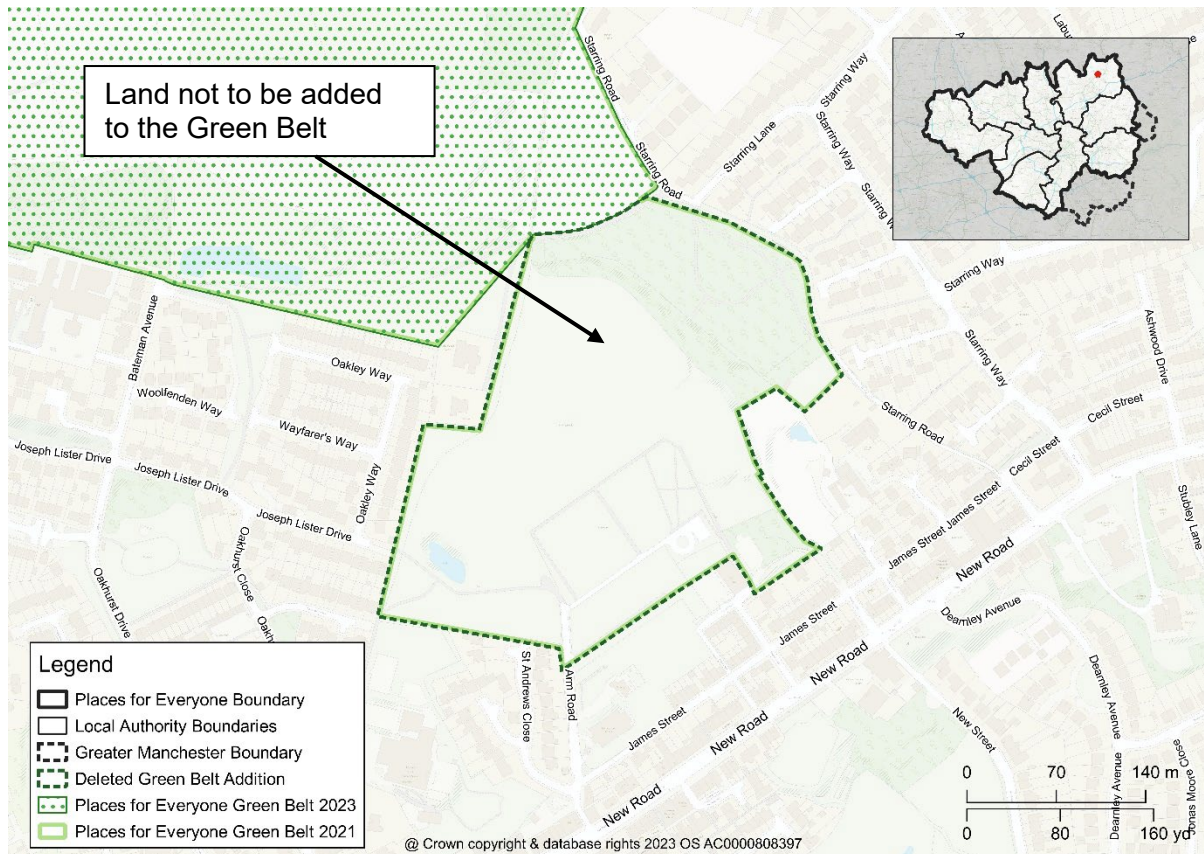
Delete Green Belt Addition GBA21 from the policies map and amend the Green Belt boundary accordingly



Map PMC28

GBA22 Land north of St Andrew's Church, Dearnley

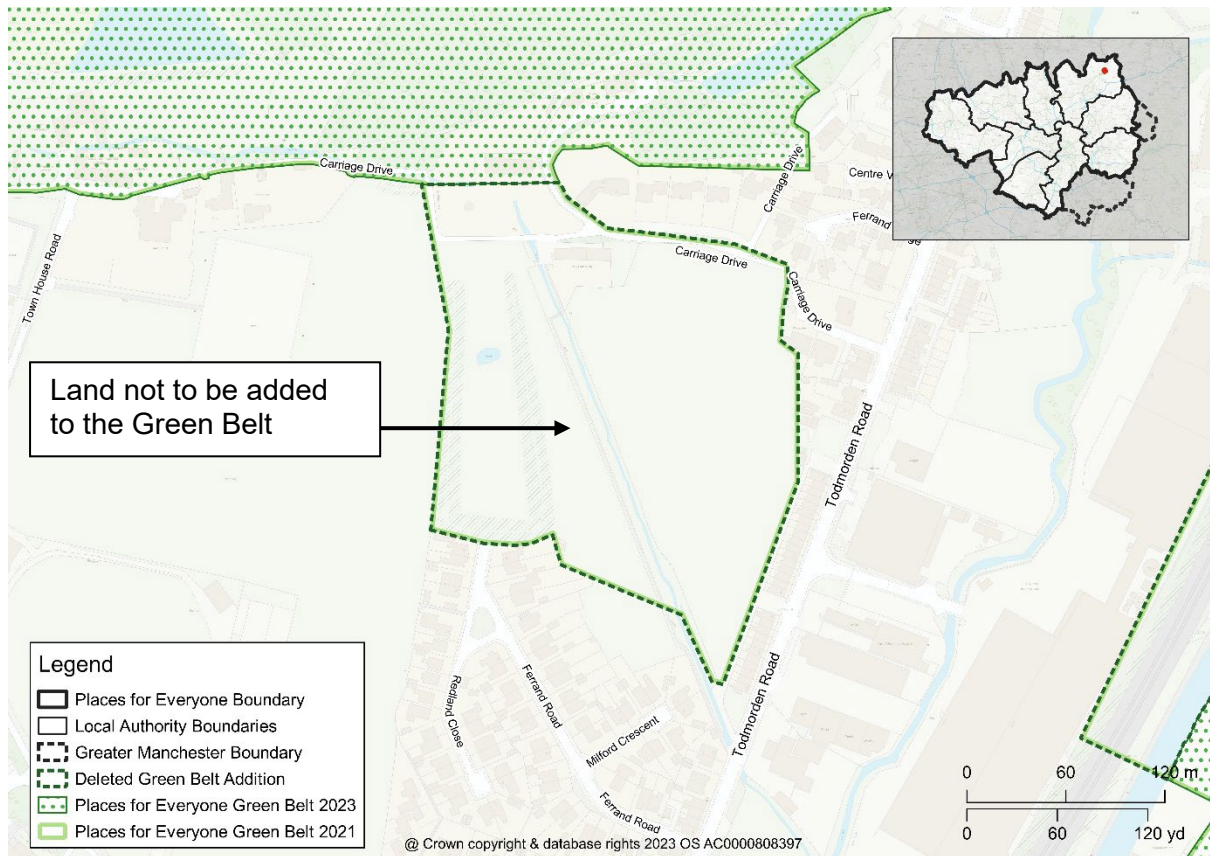
Delete Green Belt Addition GBA22 from the policies map and amend the Green Belt boundary accordingly



Map PMC29

GBA23 Land at Townhouse Brook, Littleborough

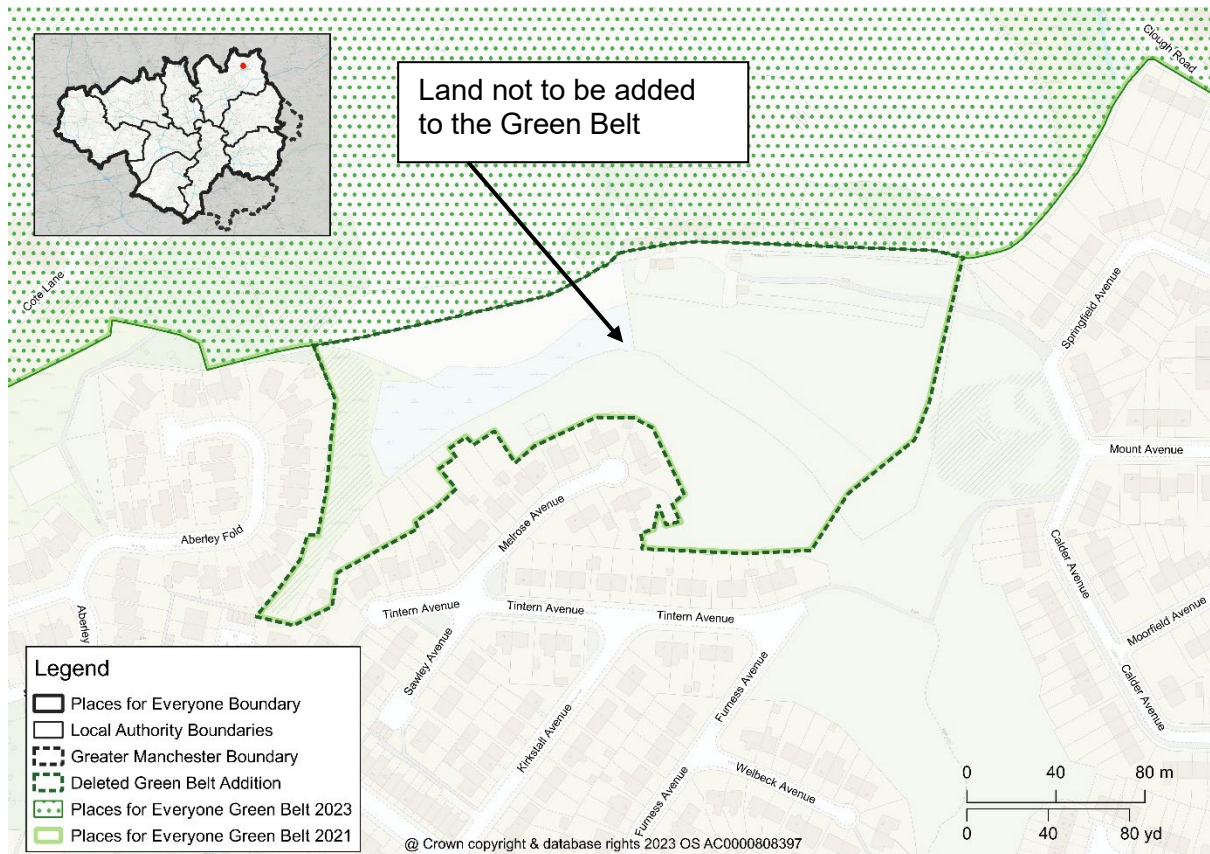
Delete Green Belt Addition GBA23 from the policies map and amend the Green Belt boundary accordingly



Map PMC30

GBA24 Land north of Shore, Littleborough

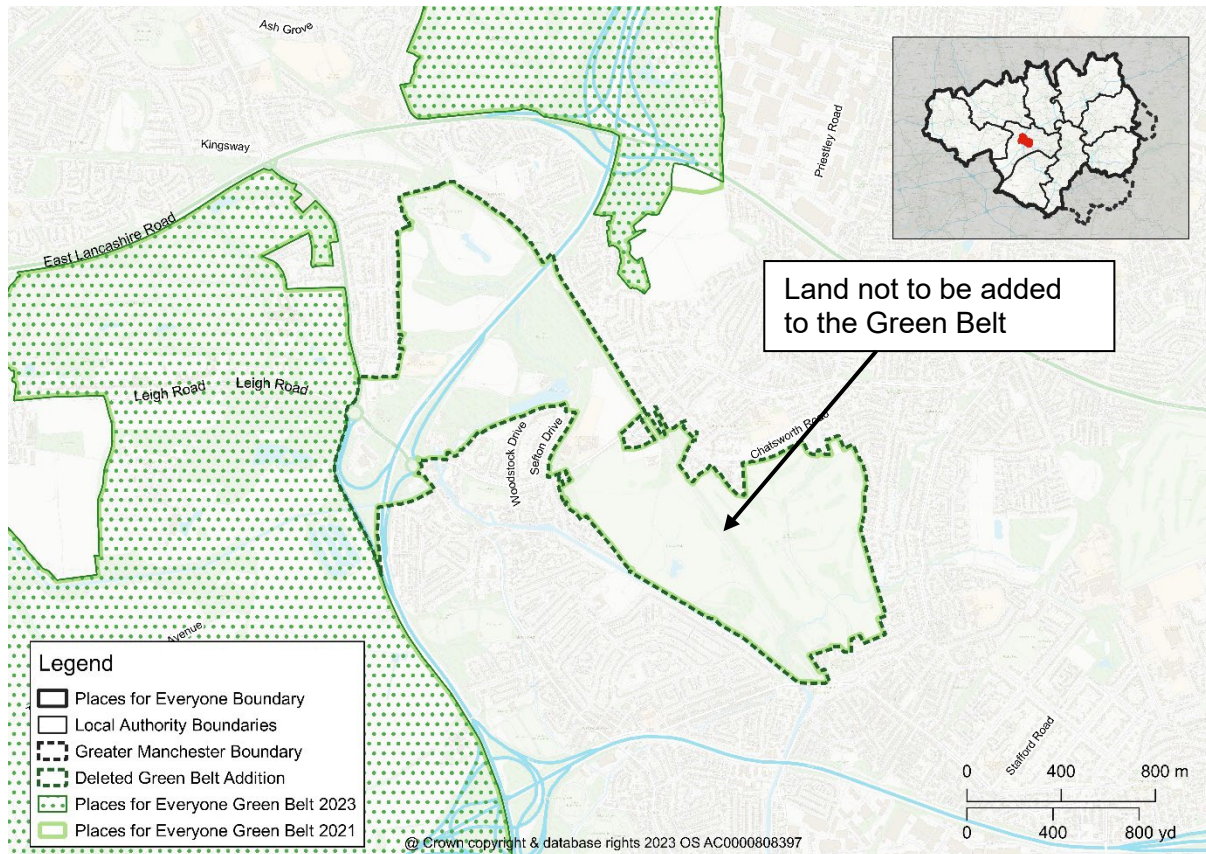
Delete Green Belt Addition GBA24 from the policies map and amend the Green Belt boundary accordingly



Map PMC31

GBA27 West Salford Greenway

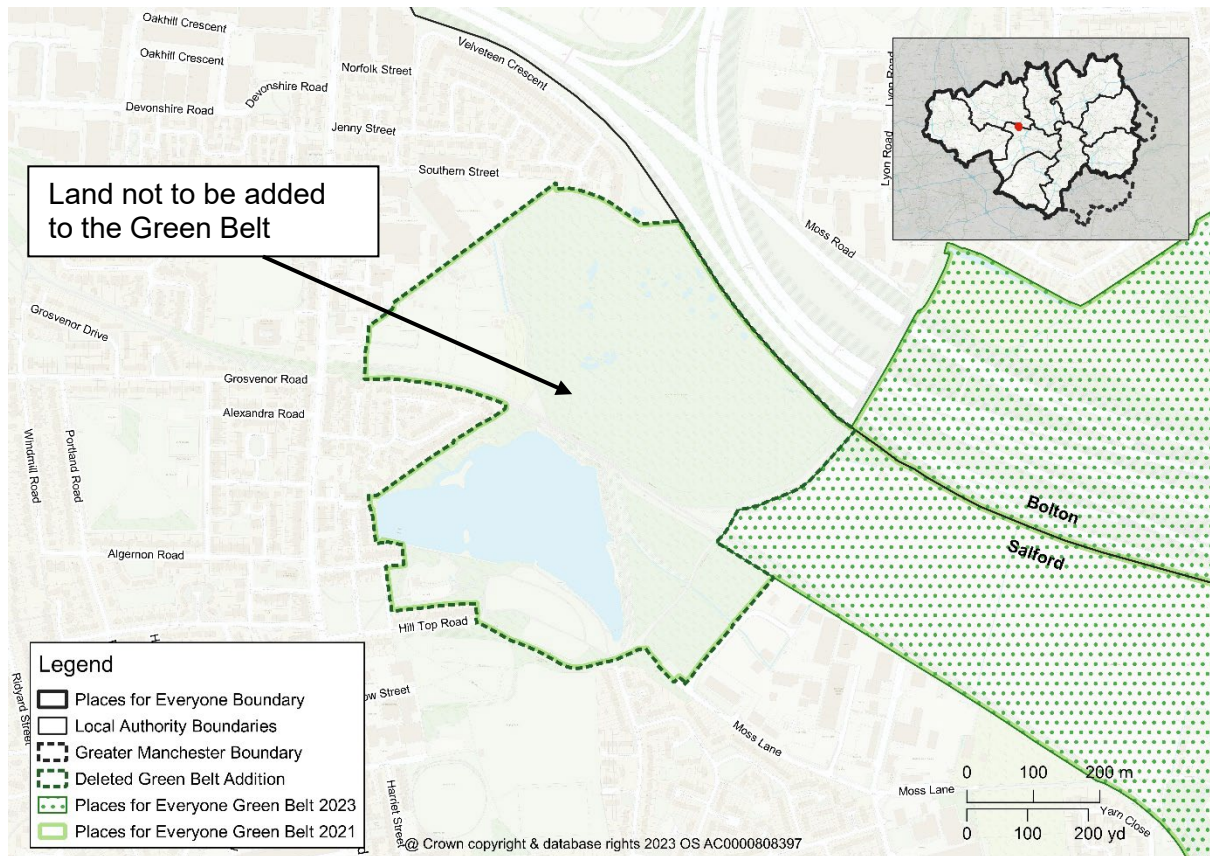
Delete Green Belt Addition GBA27 from the policies map and amend the Green Belt boundary accordingly



Map PMC32

GBA30 Blackleach Country Park

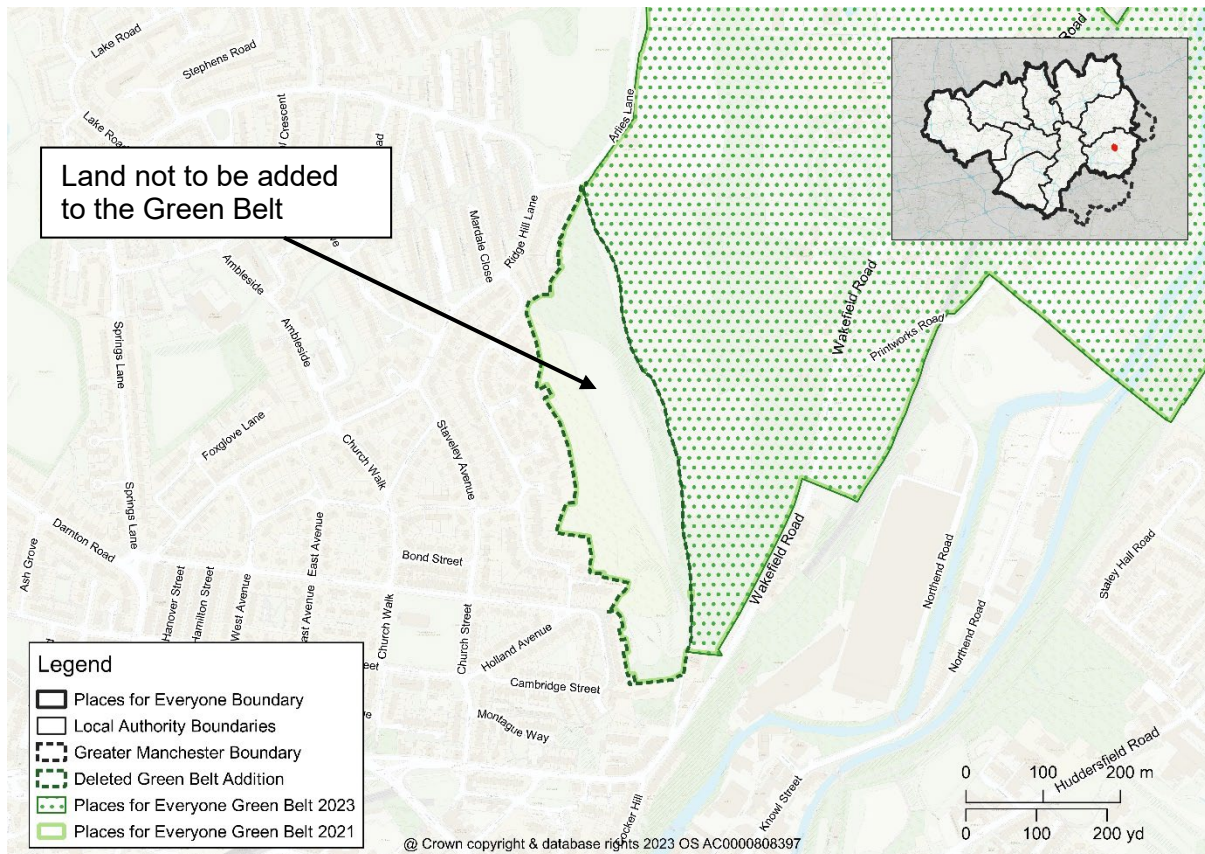
Delete Green Belt Addition GBA30 from the policies map and amend the Green Belt boundary accordingly



Map PMC33

GBA33 Ridge Hill Lane, Ridge Hill, Stalybridge

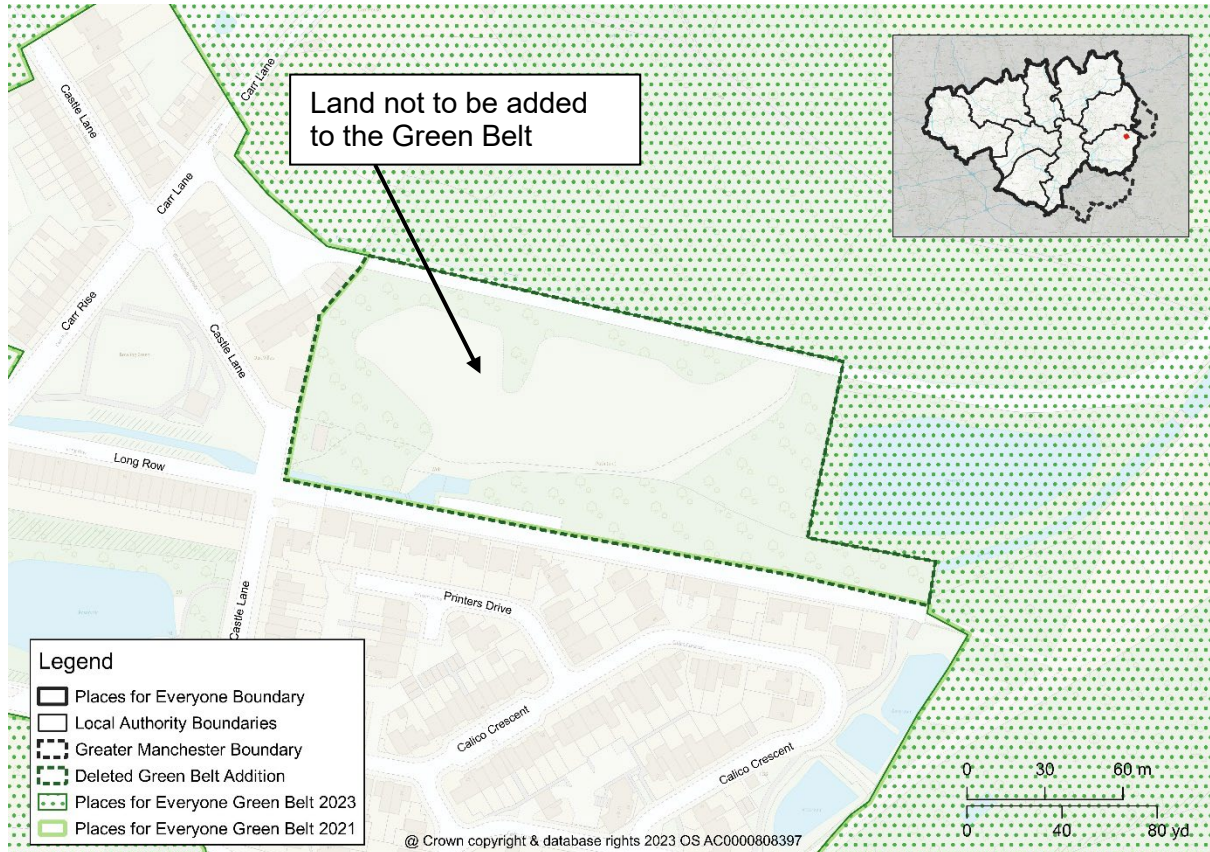
Delete Green Belt Addition GBA33 from the policies map and amend the Green Belt boundary accordingly



Map PMC34

GBA34 Cowbury Green, Long Row, Carrbrook, Stalybridge

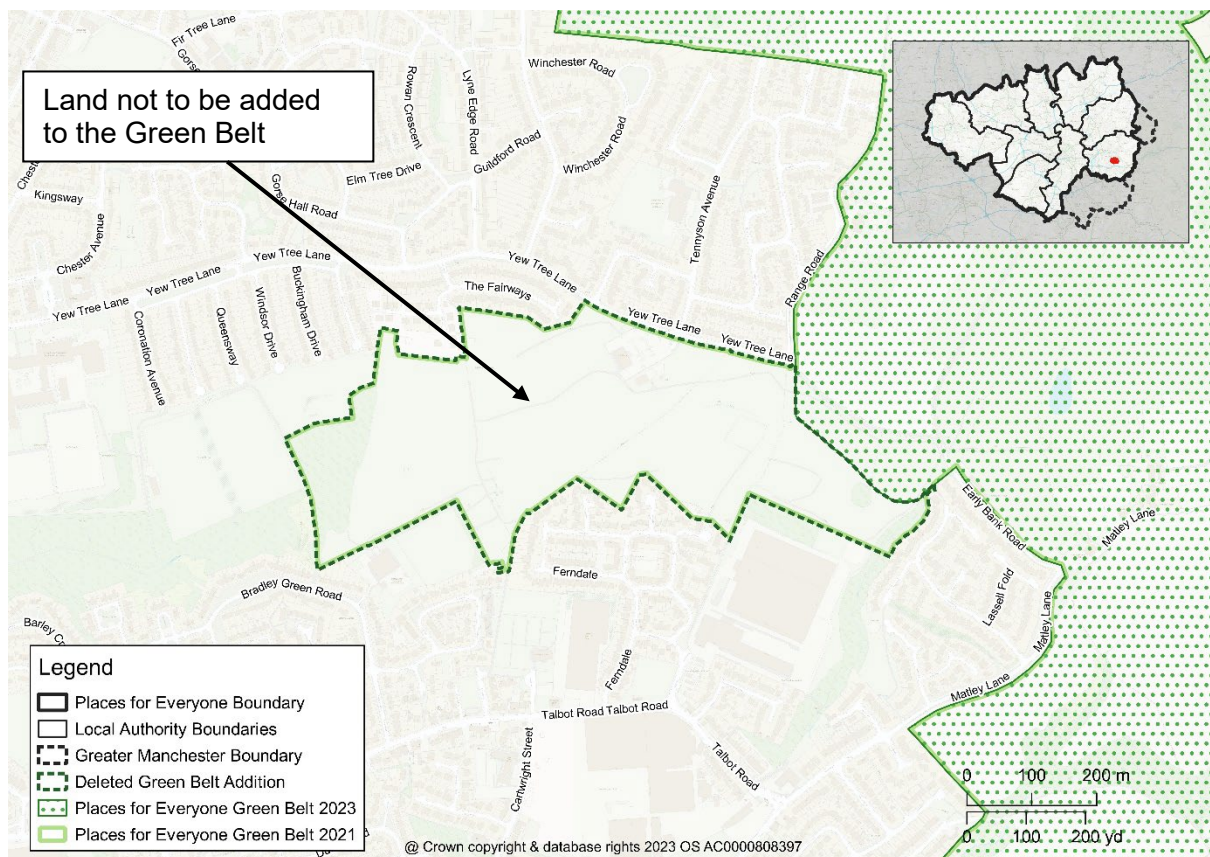
Delete Green Belt Addition GBA34 from the policies map and amend the Green Belt boundary accordingly



Map PMC35

GBA36 Yew Tree Land, Dukinfield

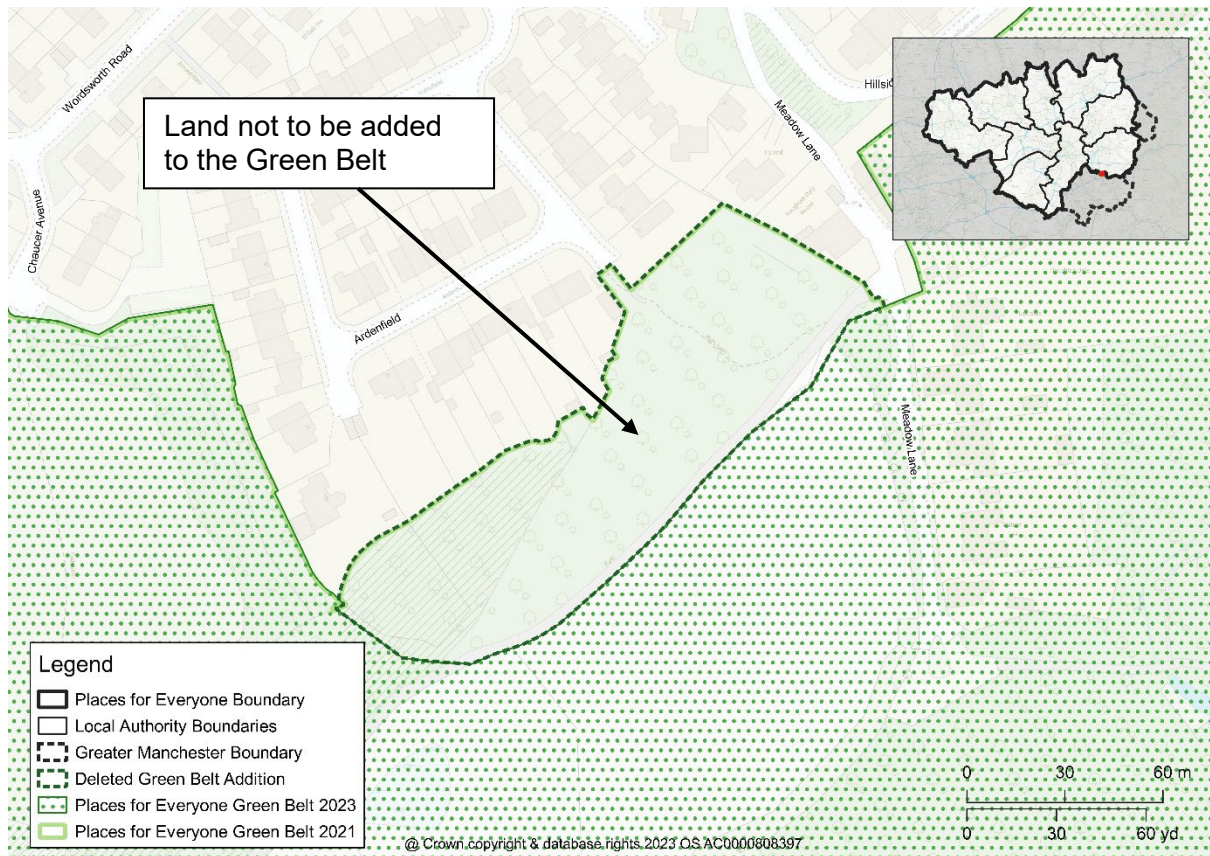
Delete Green Belt Addition GBA36 from the policies map and amend the Green Belt boundary accordingly



Map PMC36

GBA38 Ardenfield, Haughton Green, Denton

Delete Green Belt Addition GBA38 from the policies map and amend the Green Belt boundary accordingly



Map PMC37

GBA42 Horses Field, Danebank, Denton

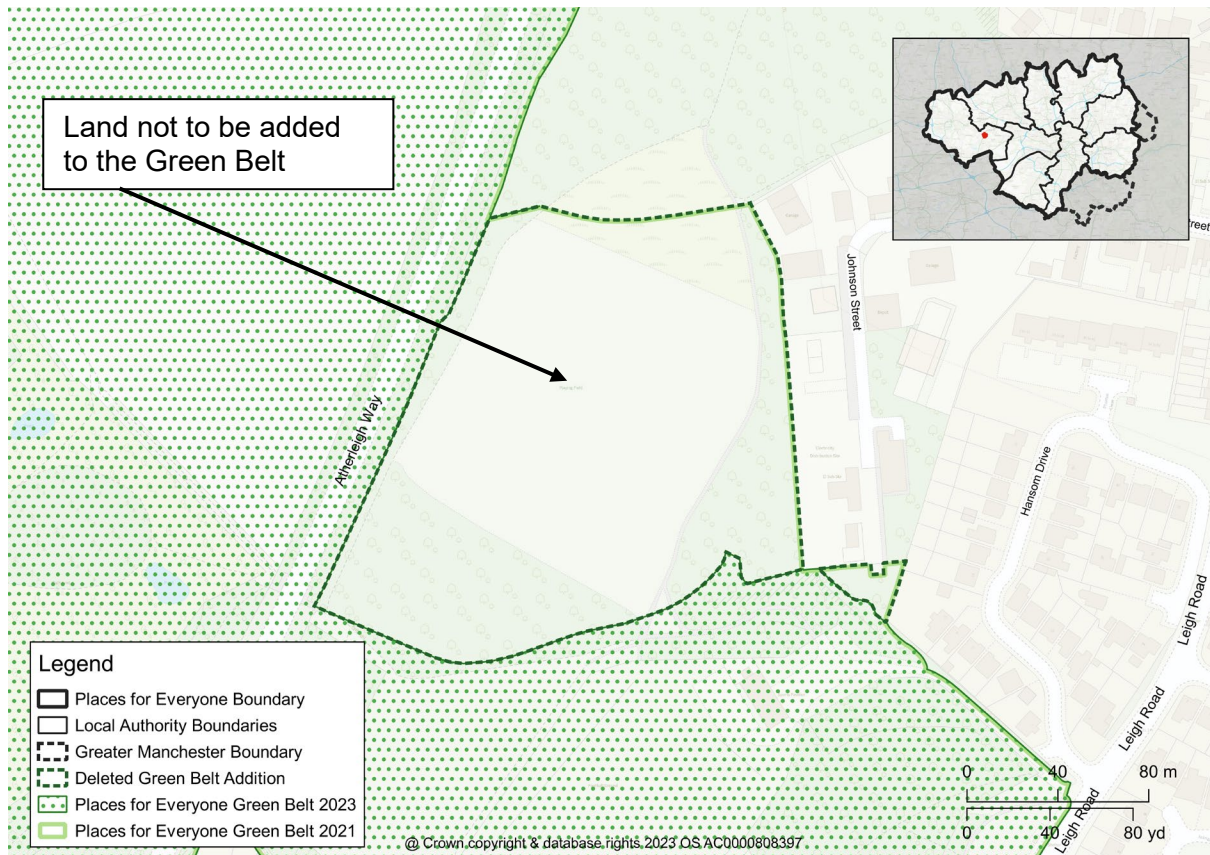
Delete Green Belt Addition GBA42 from the policies map and amend the Green Belt boundary accordingly



Map PMC38

GBA45 Pennington FC Pitches, Howe Bridge, Atherton

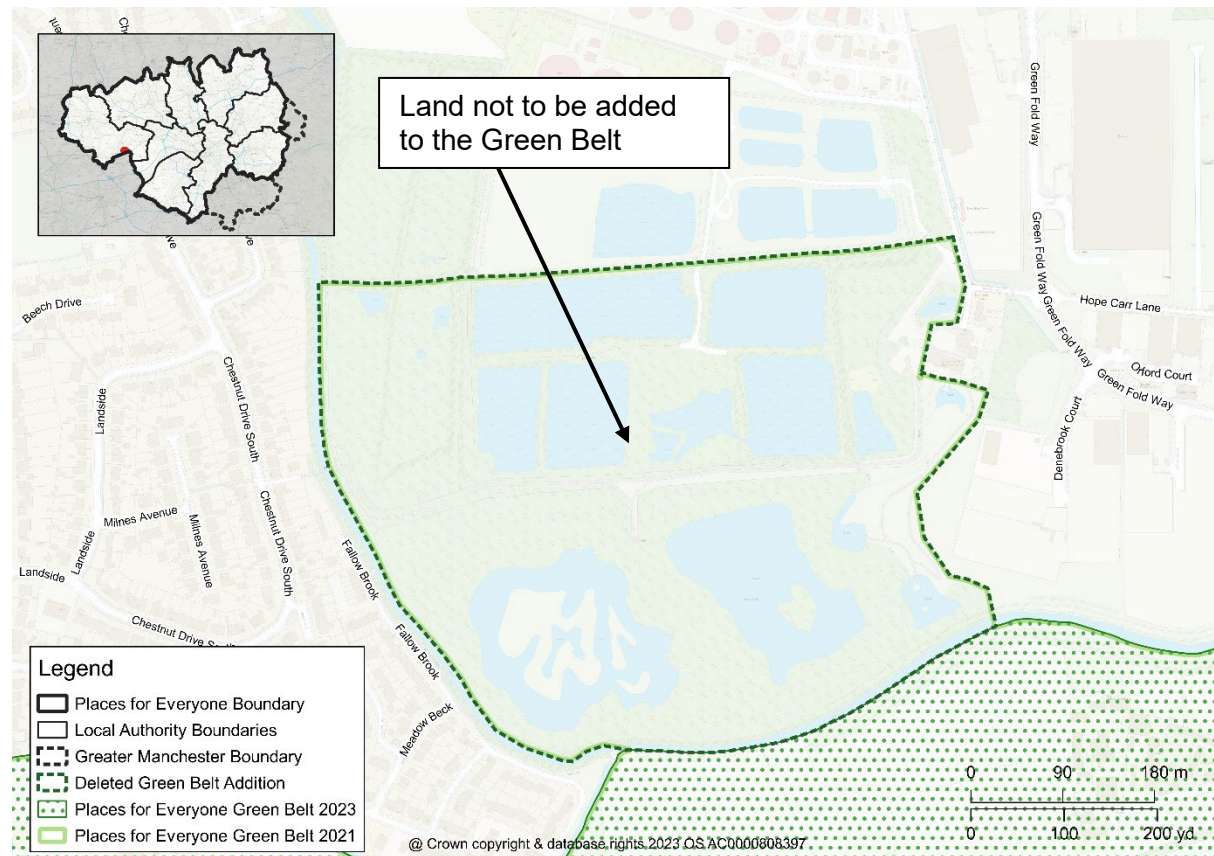
Delete Green Belt Addition GBA45 from the policies map and amend the Green Belt boundary accordingly



Map PMC39

GBA46 Hope Carr Nature Reserve, Leigh

Delete Green Belt Addition GBA46 from the policies map and amend the Green Belt boundary accordingly



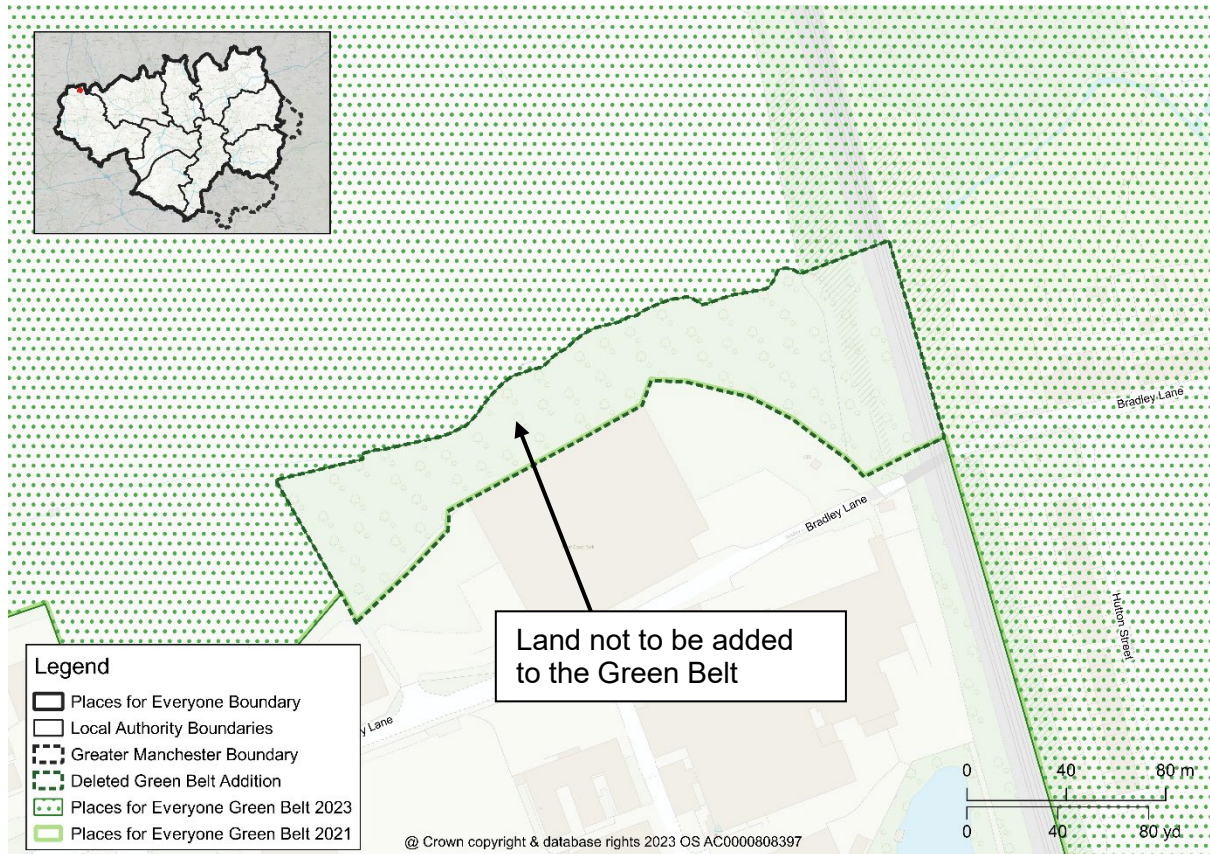
Delete Green Belt Addition GBA47 from the policies map and amend the Green Belt boundary accordingly



Map PMC41

GBA48 North Bradley Lane, Standish

Delete Green Belt Addition GBA48 from the policies map and amend the Green Belt boundary accordingly



Map PMC42

GBA49 Coppull Lane, Wigan

Delete Green Belt Addition GBA49 from the policies map and amend the Green Belt boundary accordingly

